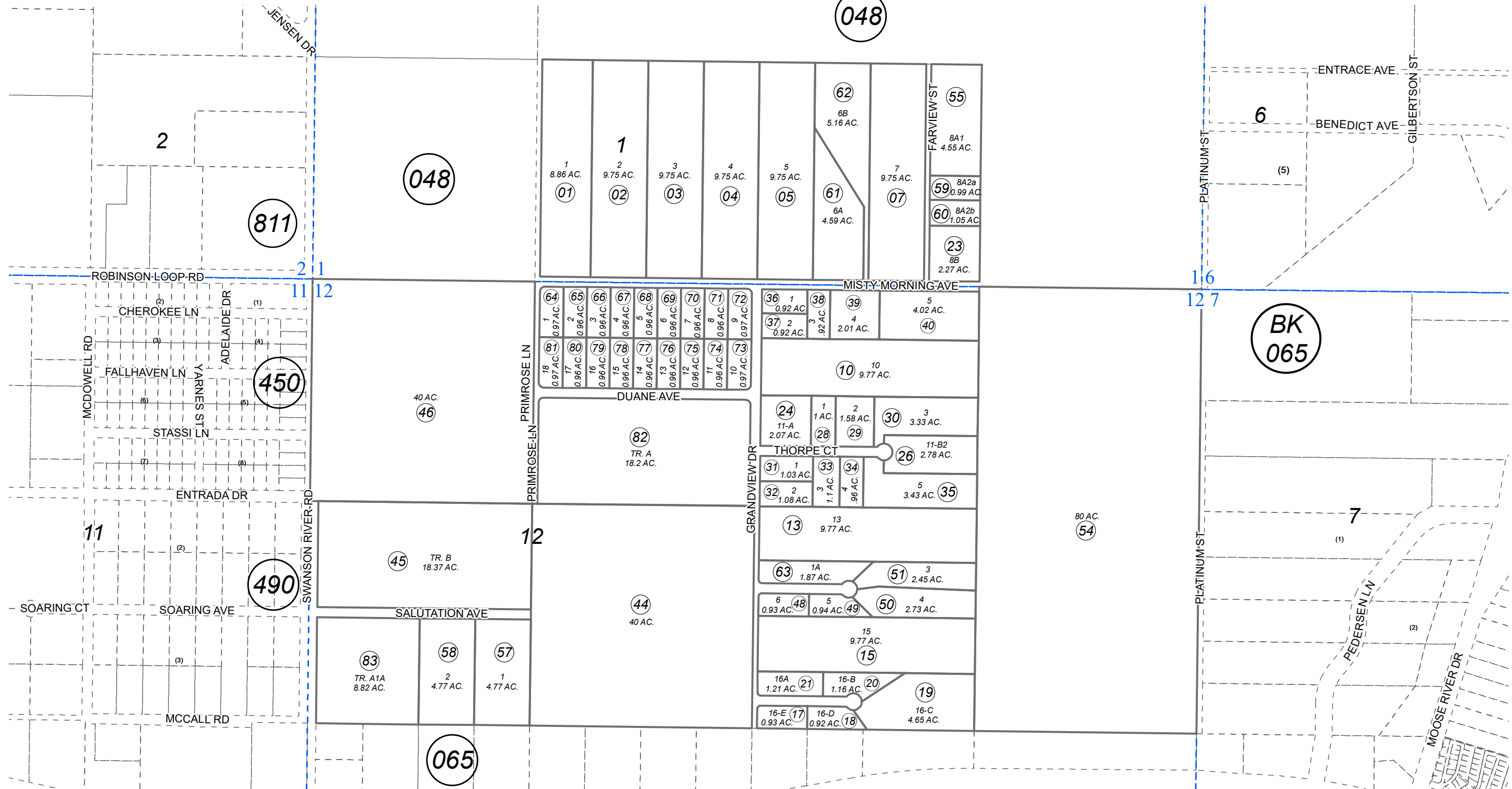


POR. SEC. 1 & 12, T05N, R09W, S.M.

063-330



AUGUST 18, 2023

For 2024 assessment roll		
Delete	Add	Revise
To		
41,42	83	

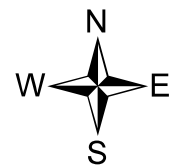
Assessor's Map
Kenai Peninsula Borough

GRANDVIEW SUB KN0730060
MCCALL SUB KN0760175
GRANDVIEW SUB RESUB LOT 16 KN0780144
GRANDVIEW SUB LOTS 8A & 8B KN0810153
GRANDVIEW SUB RESUB LOTS 11 & 12 KN0820035
GRANDVIEW SUB NO 4 KN0830094
GRANDVIEW SUB NO 5 KN0830217
GRANDVIEW SUB NO 3 AMENDED KN0830232
GRANDVIEW SUB NO 6 KN0840055
MCCALL SUB NO 2 KN0850109

MCCALL SUB NO 2 KN0850109
GRANDVIEW SUB WHITE 1986 SUB OF TRACT 14 KN0860162
GRANDVIEW SUB ADAMS ADDN KN2004114
MCCALL SUB NO 2 CRAVEN ADDN KN2008074
GRANDVIEW SUB ADAMS ADDN NO 2 KN2009021
GRANDVIEW SUB LARSON ADDN KN2015085
GRANDVIEW SUB RAMONDINO REPLAT KN2016066
LEVAN-STERLING SUB KN2023007
MCCALL SUB 2022 REPLAT KN2023036

This map is prepared for Kenai Peninsula Borough Assessing Dept. use only and is not intended for conveyance nor is it a survey.

Note- Assessor's block Numbers Shown in Ellipses
Assessor's Parcel Numbers Shown in Circles



0 200 400 Feet