

POR. SEC. 25 & 36, T05N, R01W, S.M.

125-210

202

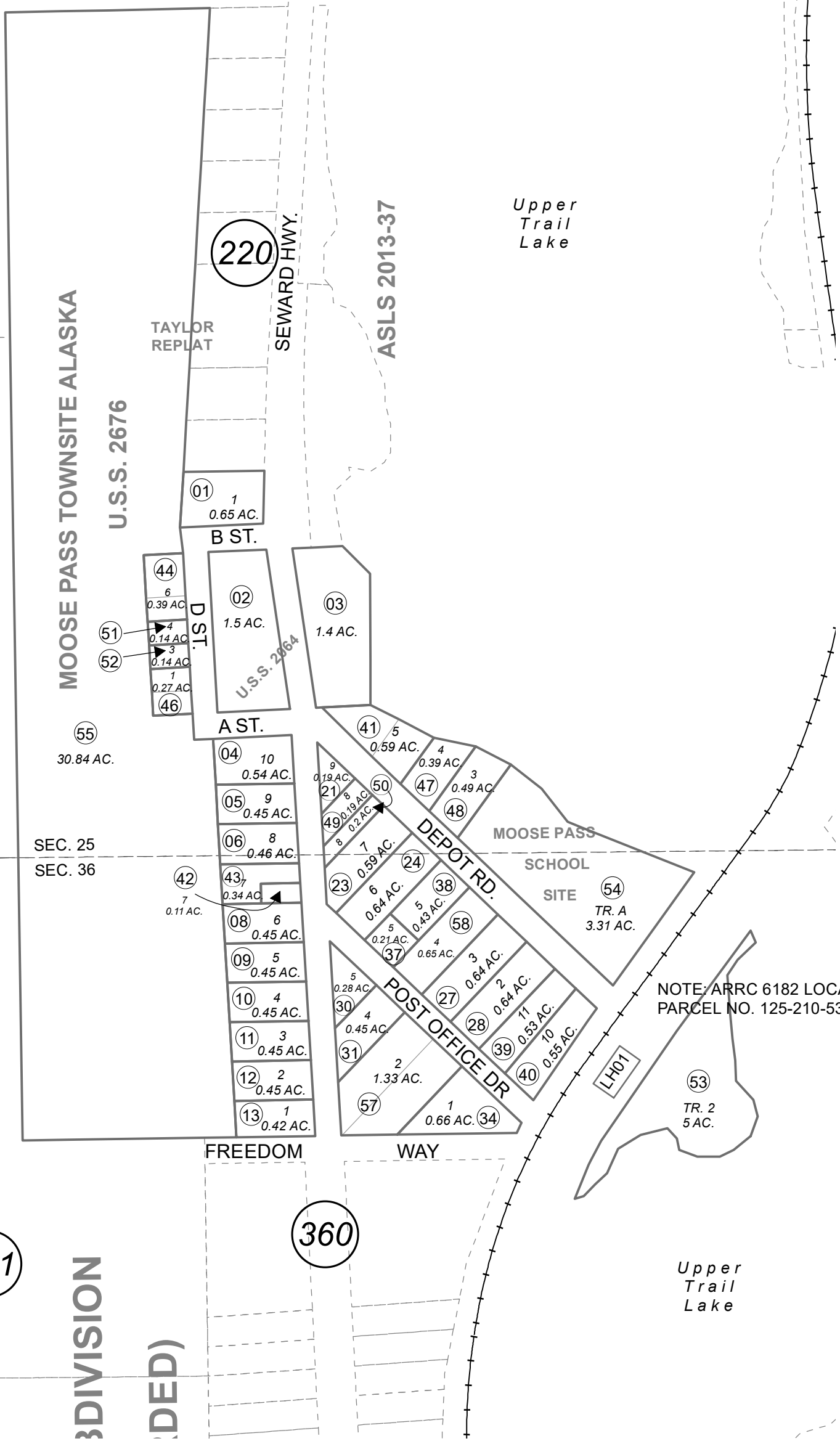
201

3 DIVISION
(DED)

WESLEY
SUBD.
220

220

360



FEBRUARY 1, 2022

For 2022 assessment roll		
Delete	Add	Revise
To	35,36	58

0 100 200 Feet



NOTE: ARRC 6182 LOCATED ON PARCEL NO. 125-210-53

This map is prepared for Kenai Peninsula Borough Assessing Dept. use only and is not intended for conveyance nor is it a survey.

Note- Assessor's block Numbers Shown in Ellipses Assessor's Parcel Numbers Shown in Circles

Assessor's Map Kenai Peninsula Borough

USS 2676 MOOSE PASS TOWNSITE ALASKA PLAT 14