

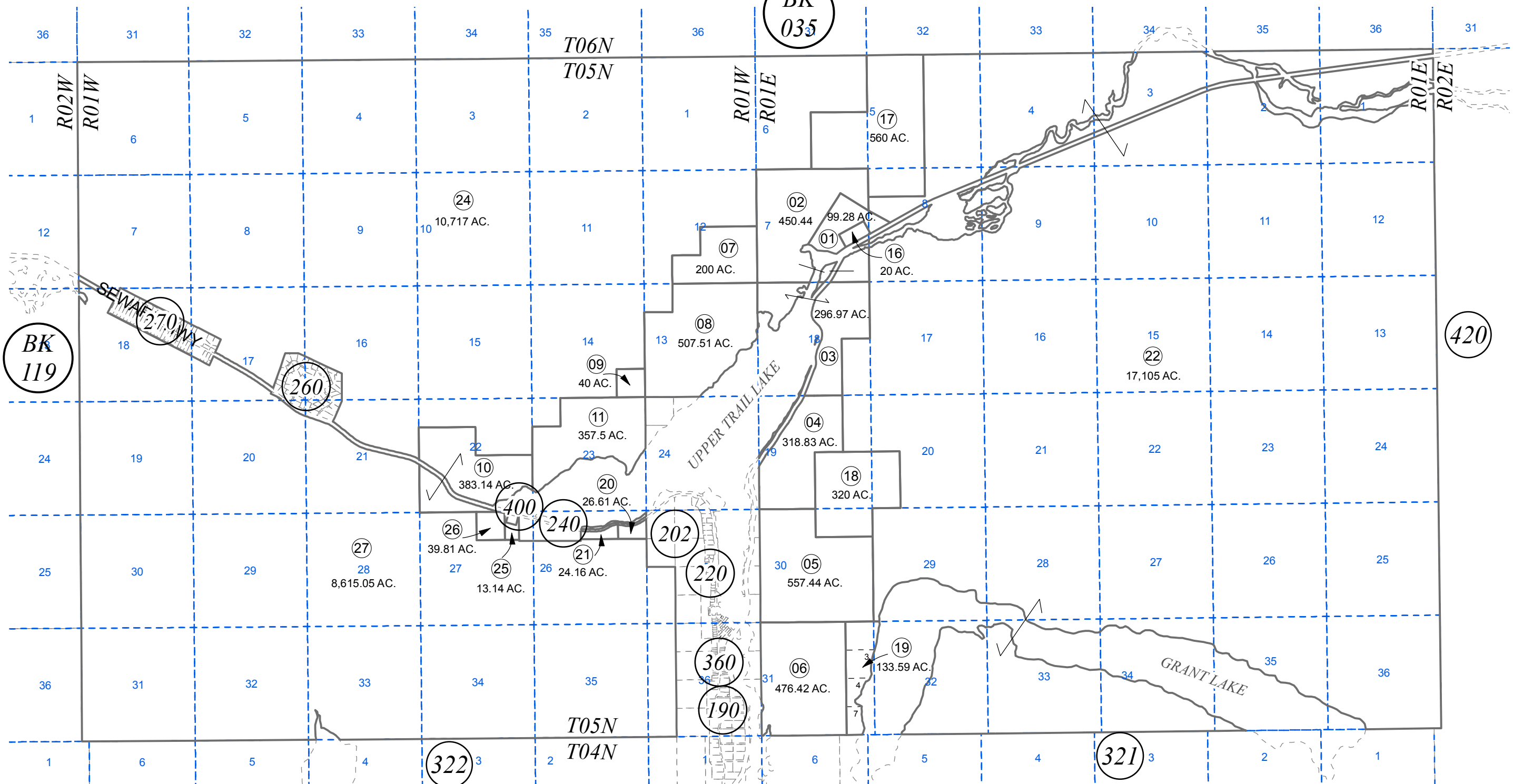
T05N, R01W, R01E, S.M.

125-310

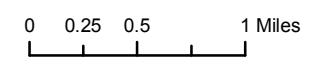
BK 035

BK 119

420



SEPTEMBER 30, 2015



For 2016 assessment roll		
Delete	Add	Revise
To		
23	25-27	

Assessor's Map  
Kenai Peninsula Borough

US SURVEY 1376 SW0001376

This map is prepared for Kenai Peninsula Borough Assessing Dept. use only and is not intended for conveyance nor is it a survey.

Note- Assessor's block Numbers Shown in Elipses  
Assessor's Parcel Numbers Shown in Circles