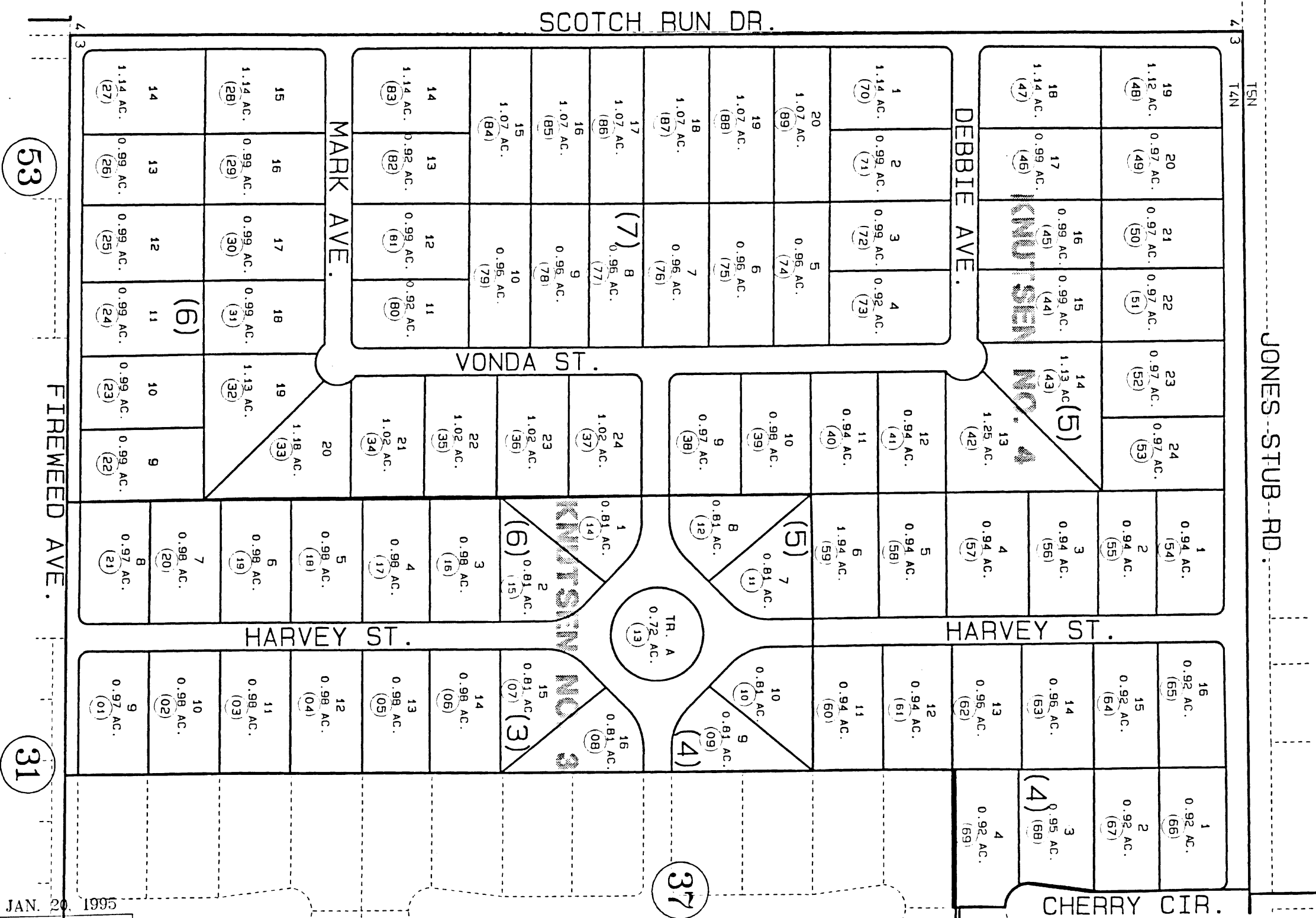


POR. NW1/4 SEC. 3, T4N, **3** R11W, SEWARD MERIDIAN

131-520



BK
55

53

31

37

DATE: JAN. 20, 1995

FOR 1995 ASSESSMENT ROLL		
DELETE	ADD	REVISED
TO REVISED PAGE		

KNUTSEN NO. 3 KN780178
KNUTSEN NO. 4 KN840063
Assessor's Map
Kenai Peninsula Borough

THIS MAP IS PREPARED FOR KENAI PENINSULA BOROUGH ASSESSING DEPT. USE ONLY AND IS NOT INTENDED FOR ANY OTHER USE OR REPRESENTATION

NOTE - Assessor's Block Numbers Shown In Ellipses
Assessor's Parcel Numbers Shown In Circles

