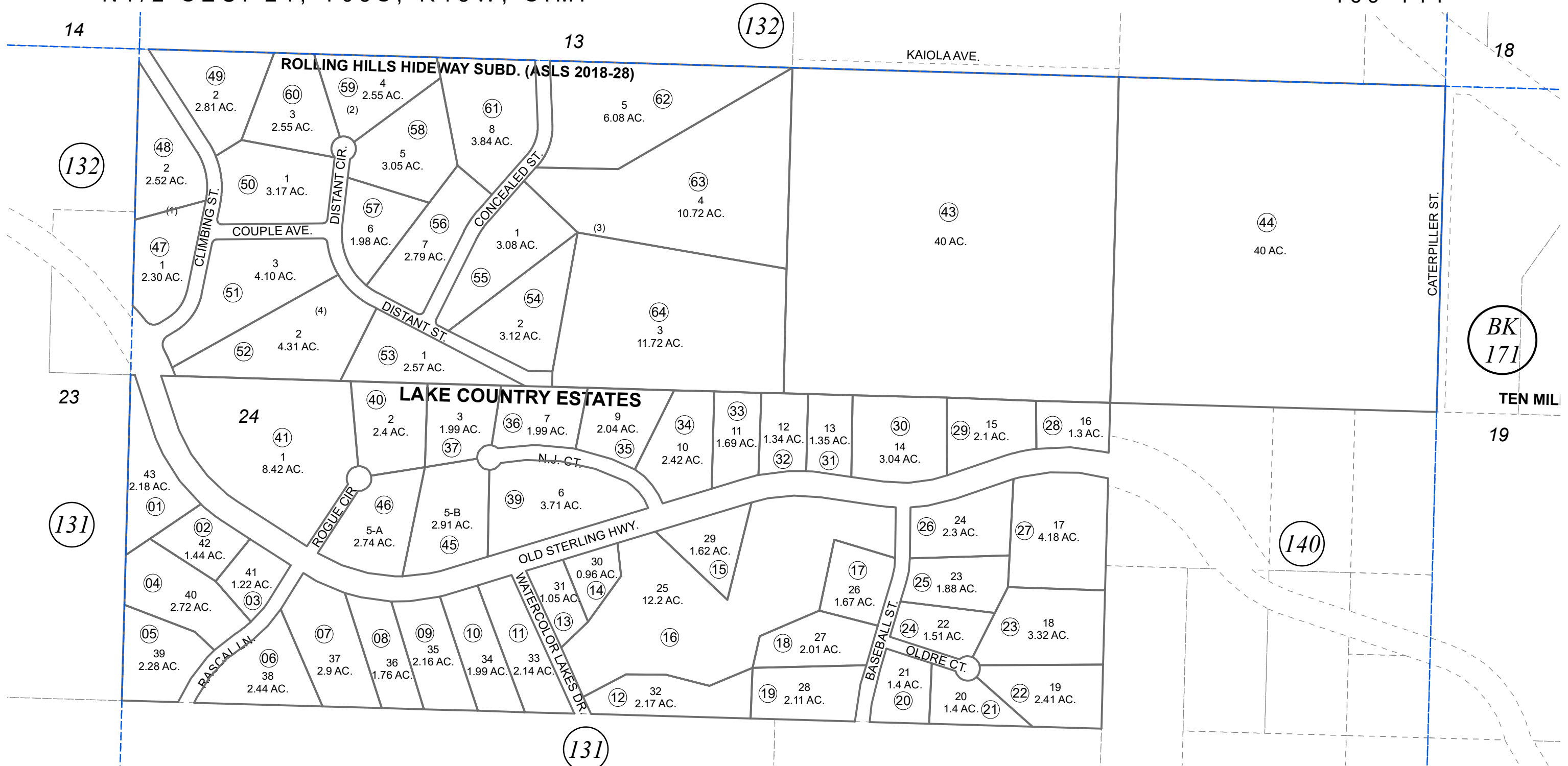


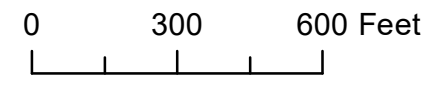
N1/2 SEC. 24, T05S, R15W, S.M.

169-141



SEPTEMBER 16, 2020

For 2021 assessment roll		
Delete	Add	Revise
To		
42	47-64	



Assessor's Map  
Kenai Peninsula Borough

LAKE COUNTRY ESTATES SUB HM0850098  
LAKE COUNTRY ESTATES SUB NO 2 HM0870017  
ASLS 2018-28; ROLLING HILLS HIDEAWAY SUB HM2020026

Note- Assessor's block Numbers Shown in Ellipses  
Assessor's Parcel Numbers Shown in Circles

This map is prepared for Kenai Peninsula Borough Assessing Dept. use only and is not intended for conveyance nor is it a survey.