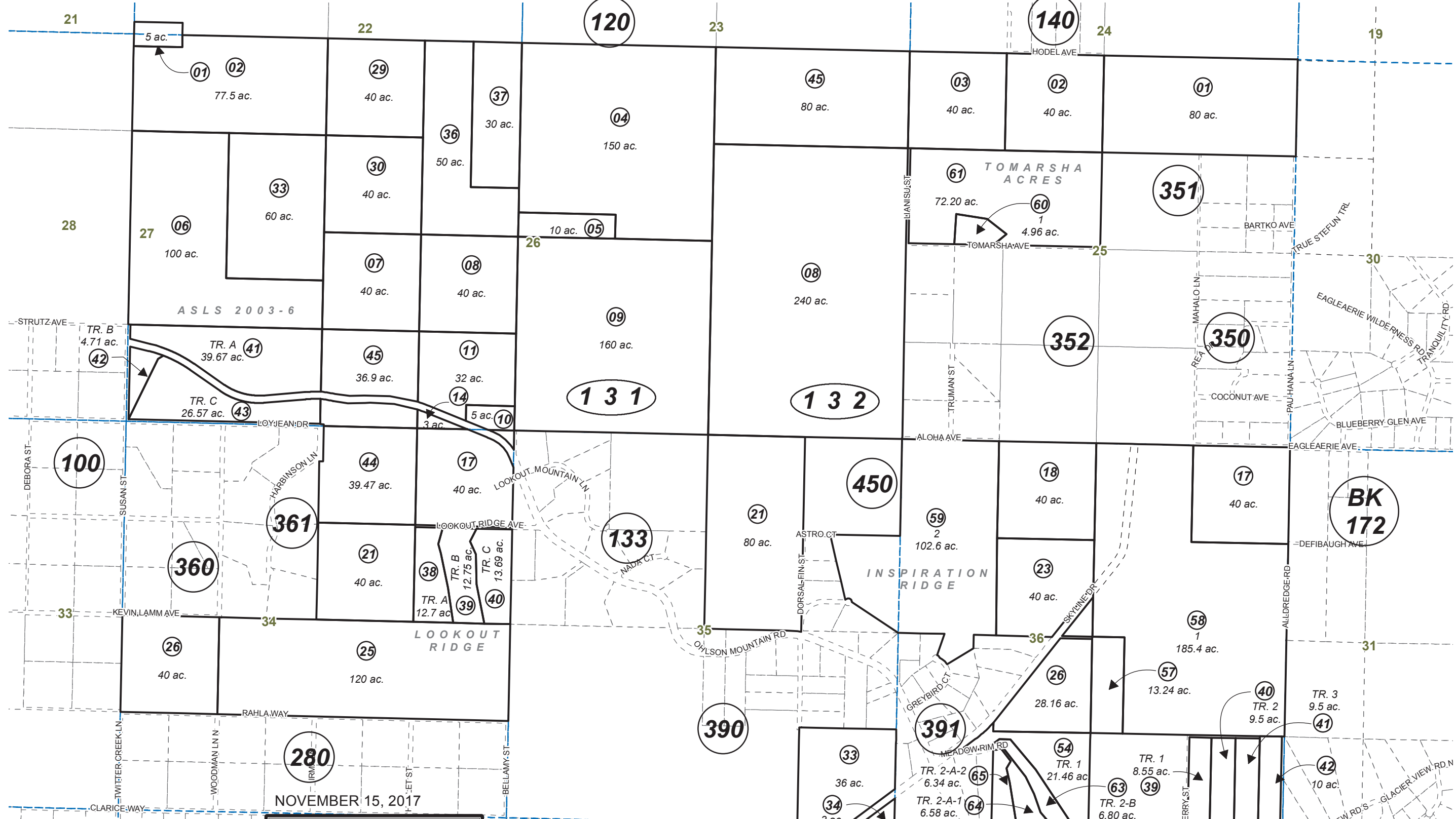


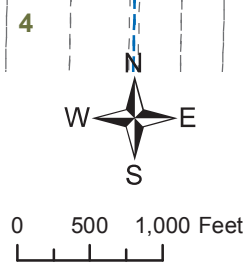
SEC. 25, 26, 27, 34, 35, 36, T05S, R13W, S.M.

171-130



NOVEMBER 15, 2017

For 2018 assessment roll		
Delete	Add	Revise
To		
13227	171391+	



Assessor's Map
Kenai Peninsula Borough

**BK
174**

PEASE SUBD HM0750053
 WHITE EARTH SUB HM0960055
 LOOKOUT RIDGE HM0970043
 INSPIRATION RIDGE PRESERVE HM0980069
 ALASKA STATE LAND SURVEY 2003-6 HM2004108
 TOMARSHA ACRES HM2004102
 WHITE EARTH SUB NO 2 HM2006034
 WHITE EARTH SUB NO 3 HM2010067
 HARBINSON LANE ROW DEDICATION 2010 HM2011028
 TOMARSHA ACRES AMENDED HM2016018

This map is prepared for Kenai Peninsula Borough Assessing Dept. use only and is not intended for conveyance nor is it a survey.

Note- Assessor's block Numbers Shown in Ellipses
 Assessor's Parcel Numbers Shown in Circles