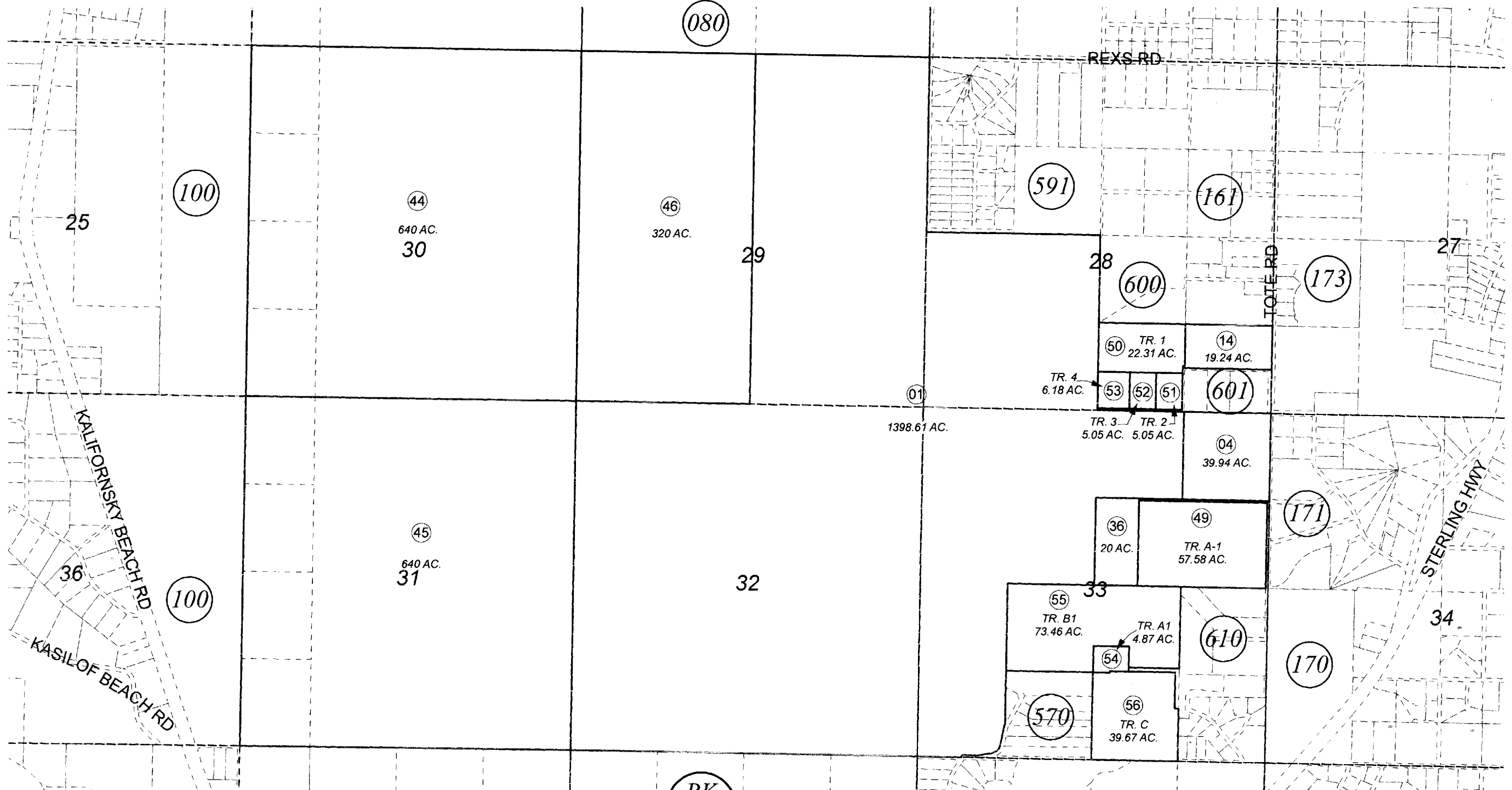


SEC. 28-33, T04N, R11W, S.M.

131-160



JUNE 24, 2008

For 2009 assessment roll		
Delete	Add	Revise
To		
47,48, 570-01	54-56	



Assessor's Map
Kenai Peninsula Borough

BK
133

CARL H SWANSON TRACTS KN0820095
 REFLECTION LAKE SUB # 2 KN2003063
 TEACK LAKE SUB KN2006084
 CARL H SWANSON TRACTS SHADURA ADDN KN2008034

This map is prepared for Kenai Peninsula Borough Assessing Dept. use only and is not intended for conveyance nor is it a survey.
 Note- Assessor's block Numbers Shown in Ellipses
 Assessor's Parcel Numbers Shown in Circles