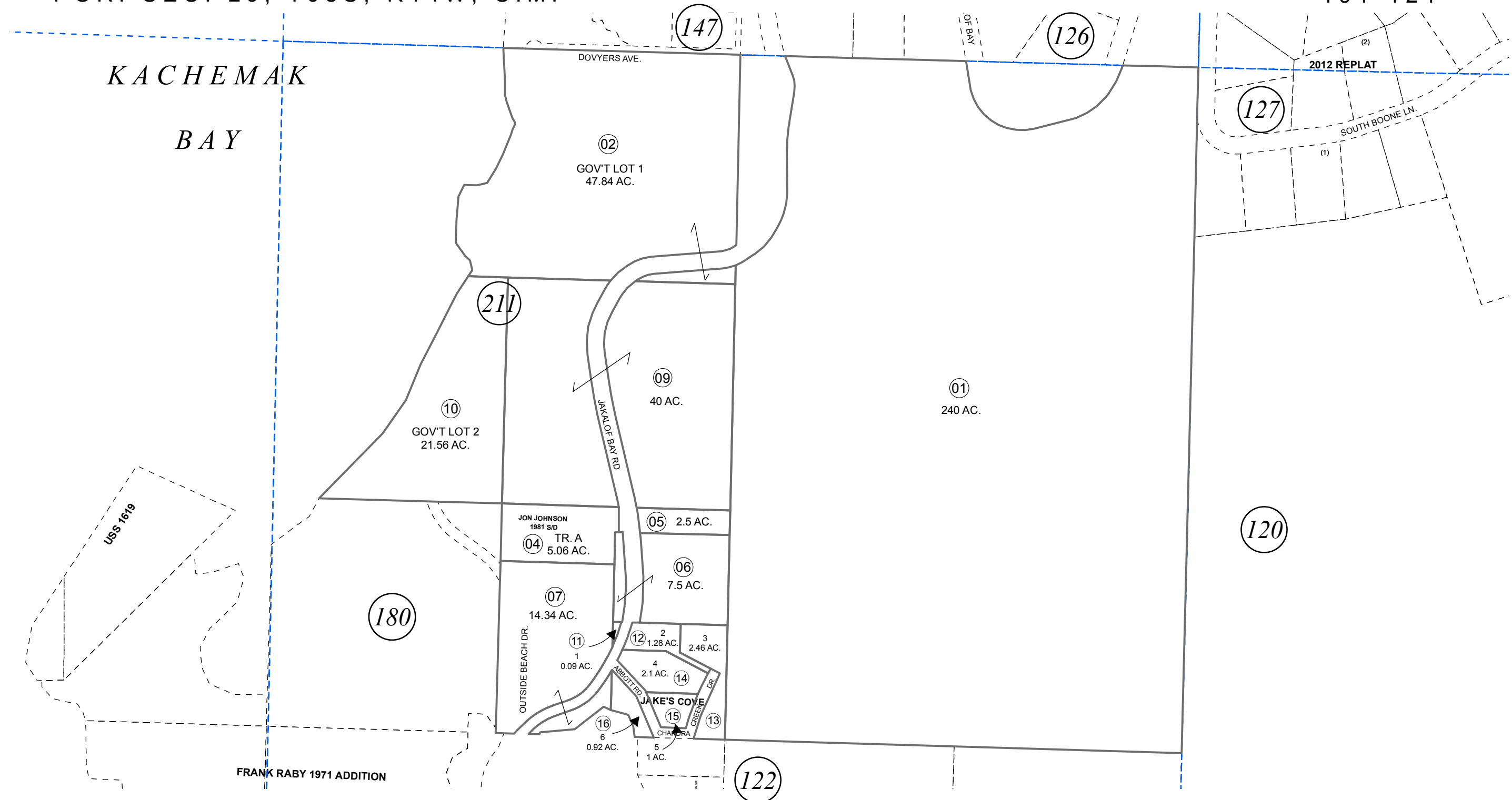


POR. SEC. 29, T08S, R14W, S.M.

191-121

KACHEMAK

BAY



USS 1619

FRANK RABY 1971 ADDITION

DECEMBER 22, 2017



0 200 400 Feet

For 2018 assessment roll		
Delete	Add	Revise
To		07
(ACREAGE CHANGE)		

Assessor's Map
Kenai Peninsula Borough

JON JOHNSON SUB 1981 ADDN TRACT A SL0830007
 JAKES COVE SUB SL0920001
 RECORD OF SURVEY SL2017011

This map is prepared for Kenai Peninsula Borough Assessing Dept. use only and is not intended for conveyance nor is it a survey.
 Note- Assessor's block Numbers Shown in Ellipses
 Assessor's Parcel Numbers Shown in Circles