

NW 1/4 SEC. 35, T05S, R13W, S.M.

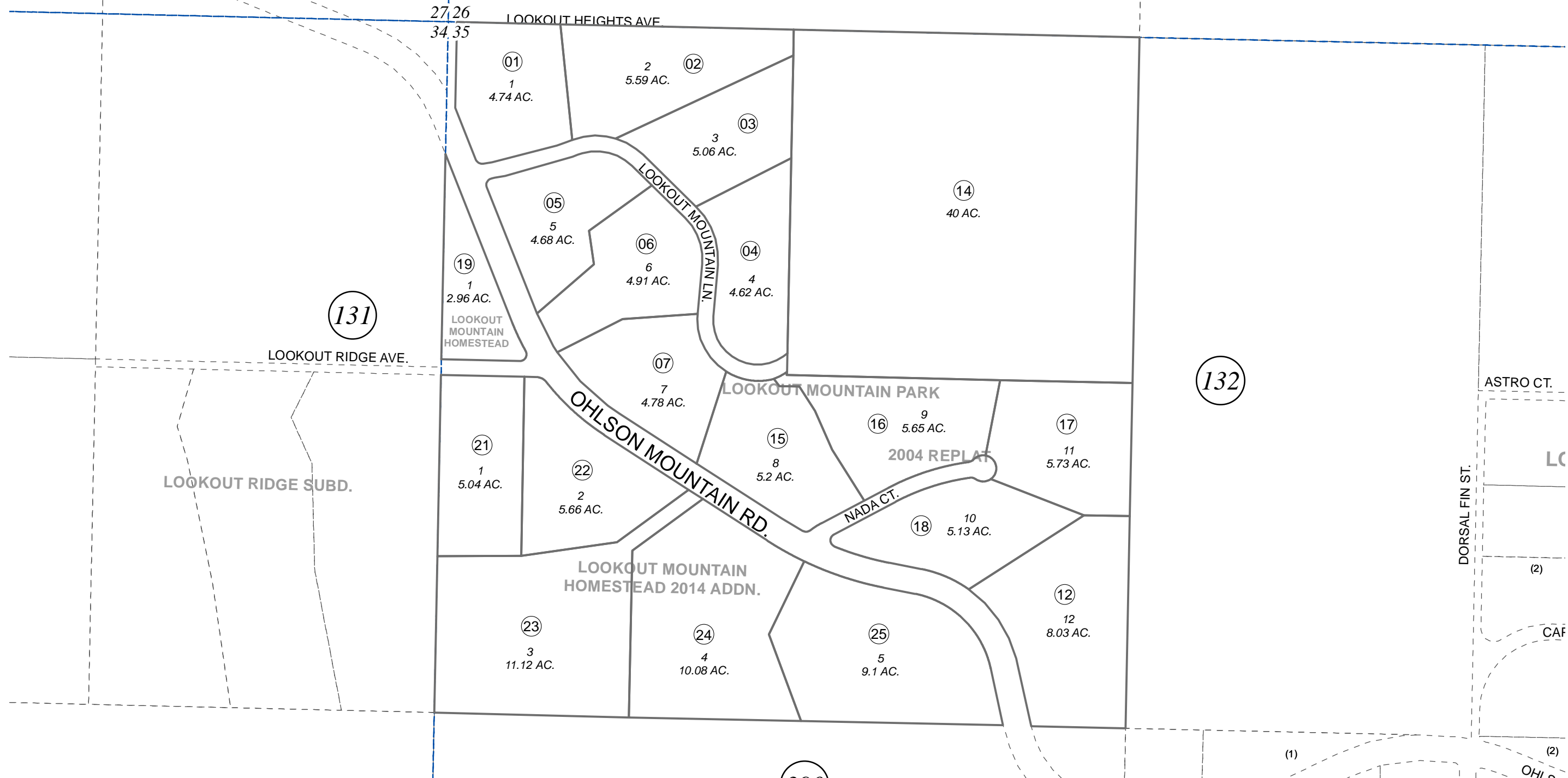
171-133

131

131

132

390



JULY 23, 2014

For 2015 assessment roll		
Delete	Add	Revise
	To	
20	21-25	



0 100 200 400 Feet

Assessor's Map
Kenai Peninsula Borough

LOOKOUT MOUNTAIN PARK SUB HM0980026
 LOOKOUT MOUNTAIN PARK SUB 2004 REPLAT HM2005076
 LOOKOUT MOUNTAIN HOMESTEAD HM2001027
 LOOKOUT MOUNTAIN HOMESTEAD 2014 ADDN HM2014014

Note- Assessor's block Numbers Shown in Ellipses
 Assessor's Parcel Numbers Shown in Circles

This map is prepared for Kenai Peninsula Borough Assessing Dept. use only and is not intended for conveyance nor is it a survey.