

GOV. LT. 19 AND W1/2 W1/2 SW1/4 SE1/4 SW1/4 IN SECTION 28
TRACTS 1 THROUGH 9 IN SECTION 33
TOWNSHIP 3 NORTH, RANGE 12 WEST, S.M.



28 33
1/4 COR.

CENTER 1/4 COR.

PUBLIC R/W PERMIT PER
ADL 224357 BK 397 PG 15

1A

2A

3A

BK. 137
Pg. 35

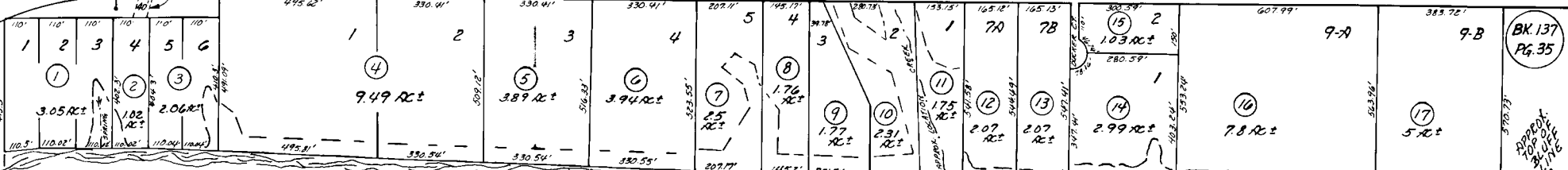
10

10

COHOE ROAD

200'

200'



BK. 137
Pg. 35

APPROX.
200' OF
PUBLIC
RIGHTS

JACKINSKY SB.
K-611

SURVEY OF STATE LAND NO. 58-39
K1715

KEOHANE NORTH
SB. 88-9

KEOHANE
SB. 78-54

KALGIN VIEW
SB. 77-191

ASLS 74-37
75-32

COOK INLET

APPROX. LINE
OF M.H.W.

Assessor's Map
Kenai Peninsula Borough, Alaska

NOTE - Assessor's "Block" Numbers Shown in Ellipses
Assessor's Parcel Numbers Shown in Circles