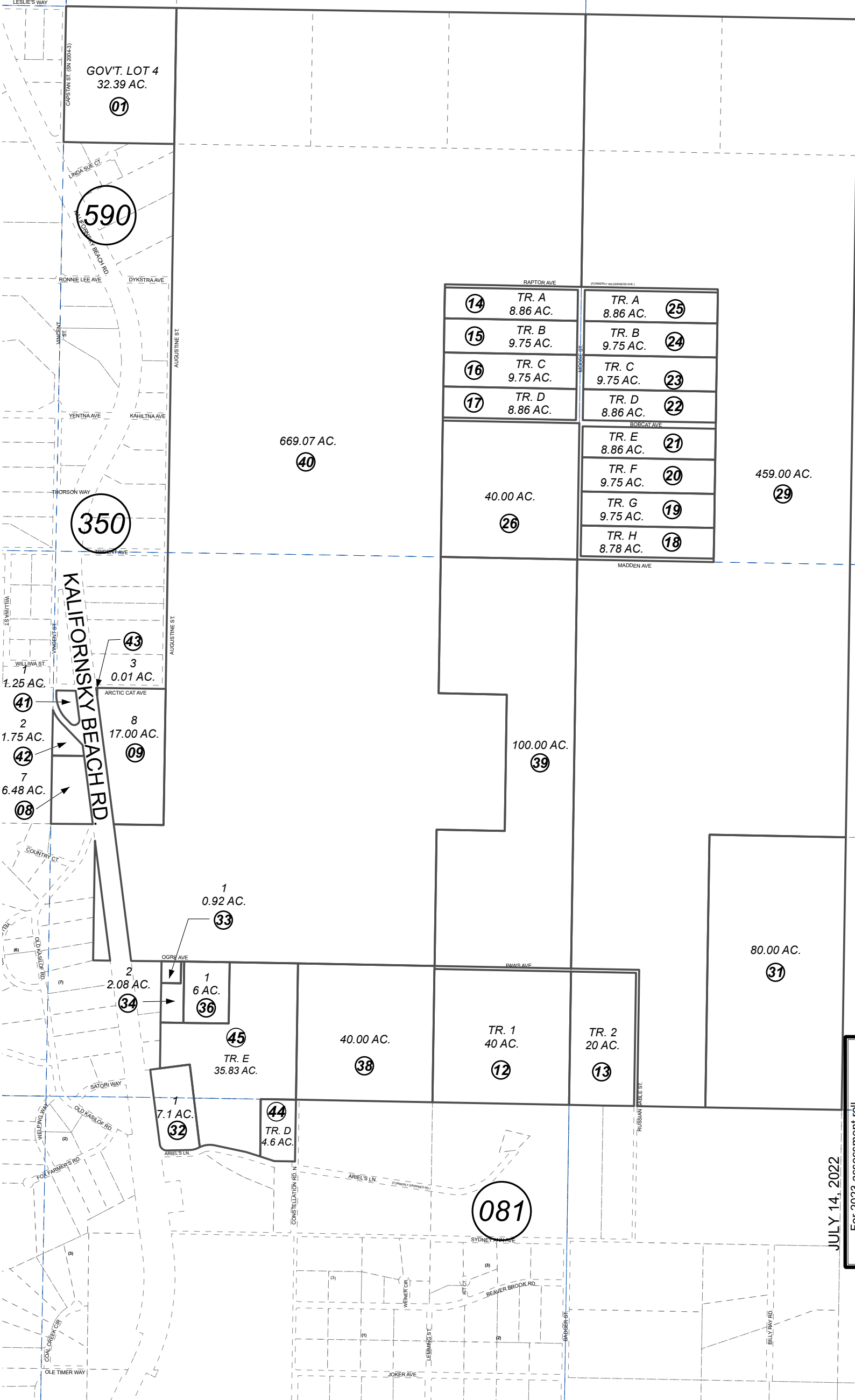


POR. SEC. 5-8, T03N, R11W, S.M.

133-031

BK
131



0 300 600 1,200 Feet

JULY 14, 2022

For 2023 assessment roll		
Delete	Add	Revise
37	To	44,45

14	TR. A 8.86 AC.	TR. A 8.86 AC.	25
15	TR. B 9.75 AC.	TR. B 9.75 AC.	24
16	TR. C 9.75 AC.	TR. C 9.75 AC.	23
17	TR. D 8.86 AC.	TR. D 8.86 AC.	22
40.00 AC.		TR. E 8.86 AC.	21
26		TR. F 9.75 AC.	20
		TR. G 9.75 AC.	19
		TR. H 8.78 AC.	18

032

KN0001686 LOON LAKE SUB
 KN0750104 KASILOF WILDERNESS SUB
 KN0900035 DUNCAN SUB ADDN NO 1
 KN0910030 DUNCAN SUB ADDN NO 2
 KN2002028 DUNCAN SUB K AND L ADDN
 KN2017002 VAN GOGH SUB
 KN2022022 DUNCAN SUB #5

Assessor's Map
 Kenai Peninsula Borough

This map is prepared for Kenai Peninsula Borough Assessing Dept. use only and is not intended for conveyance nor is it a survey.

Note- Assessor's block Numbers Shown in Ellipses
 Assessor's Parcel Numbers Shown in Circles