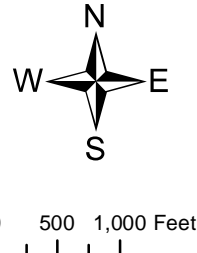
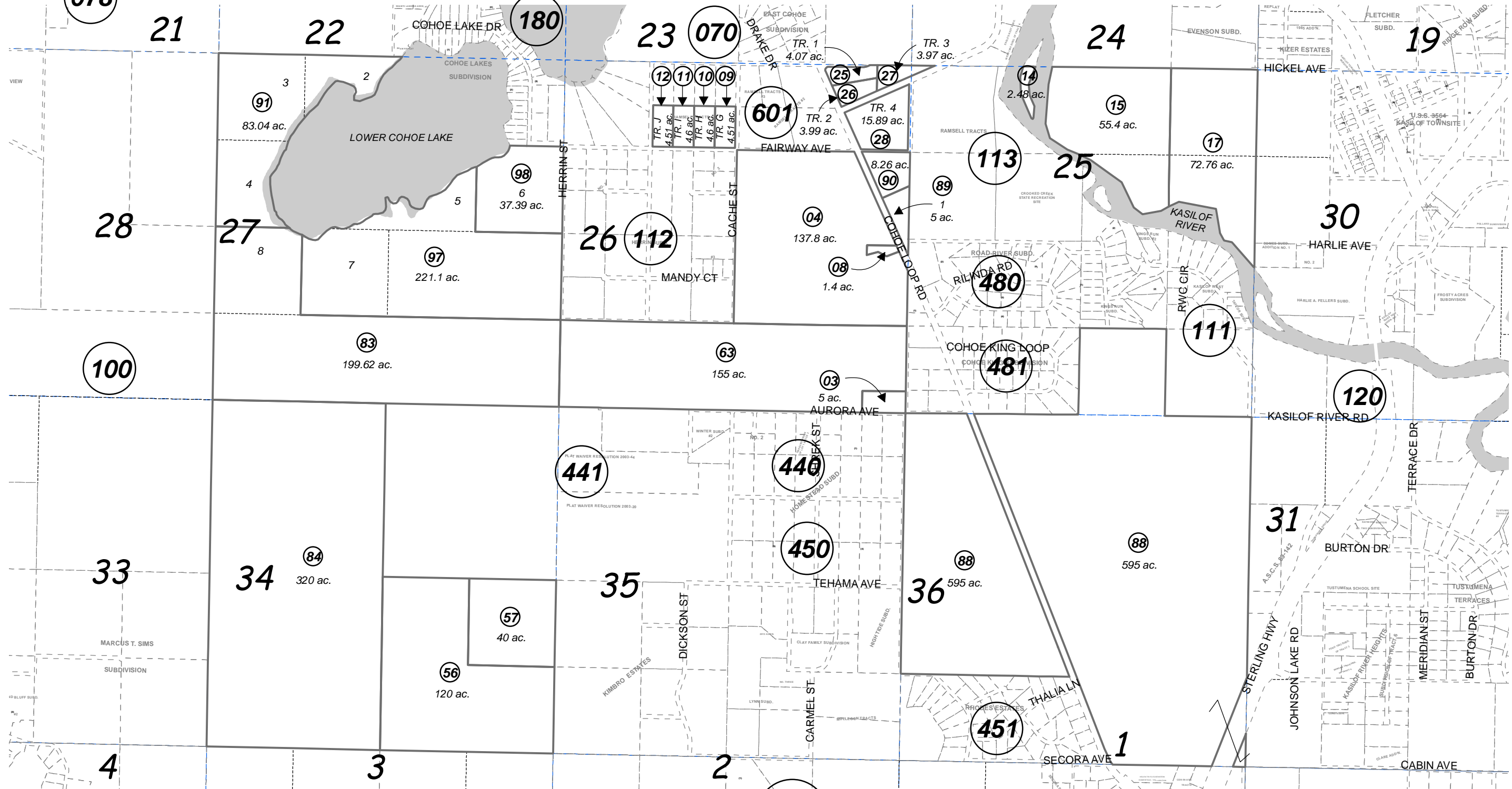


078

SEC. 25, 26, 27, 34, 35, 36, T03N, R12W, S.M.

133-110



OCTOBER 7, 2014

For 2015 assessment roll		
Delete	Add	Revise
To		
06	25-28	

Assessor's Map
Kenai Peninsula Borough

BLAKE SUB KN0880088
RAMSELL TRACTS #4 KN2011036
RAMSELL SUB 2014 ADDN KN2014060

This map is prepared for Kenai Peninsula Borough Assessing Dept. use only and is not intended for conveyance nor is it a survey.
Note- Assessor's block Numbers Shown in Ellipses
Assessor's Parcel Numbers Shown in Circles