

POR. SEC. 3, T04N, R11W, S.M.

131-310

370

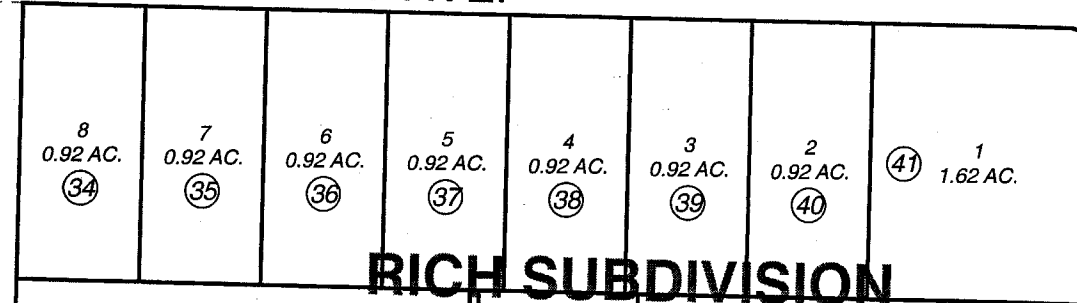
BECKY

380

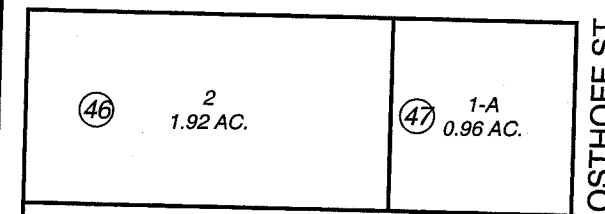
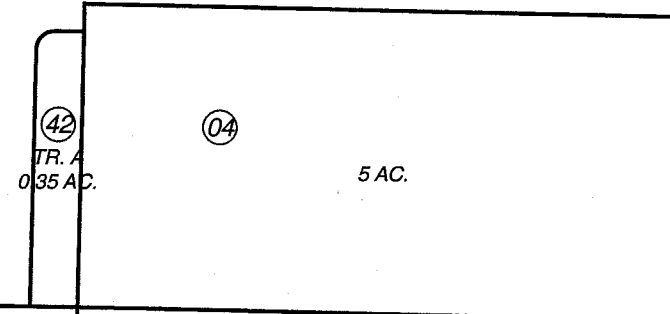
LONES

(9)

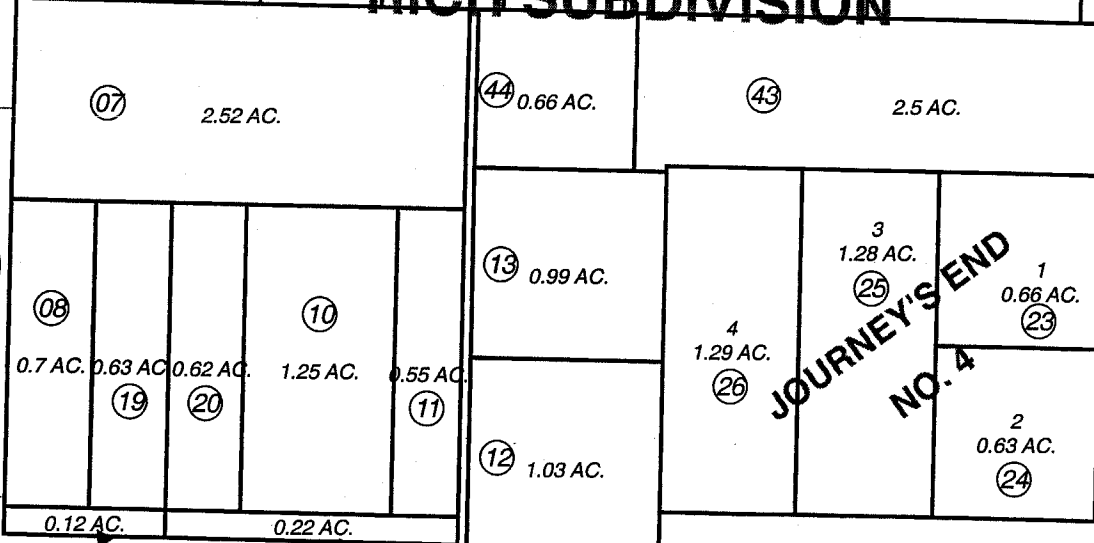
FIREWEED AVE.



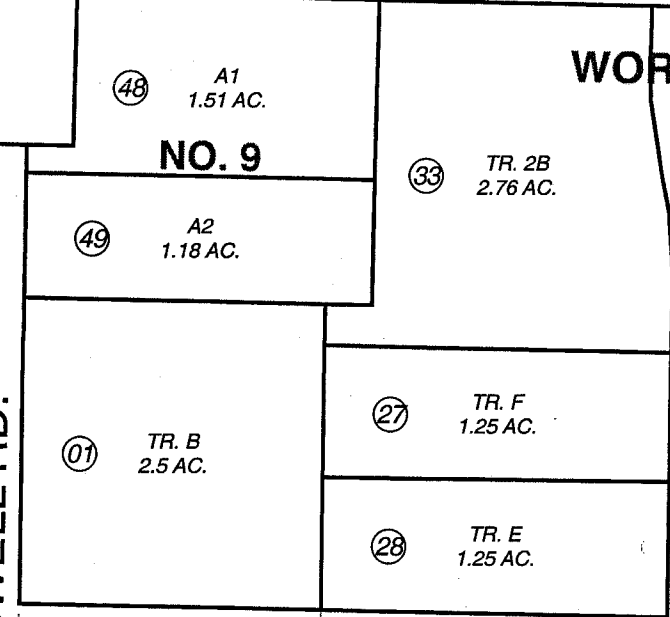
**RICH SUBDIVISION**



OSTHOFF ST.



**JOURNEYS END NO. 4**



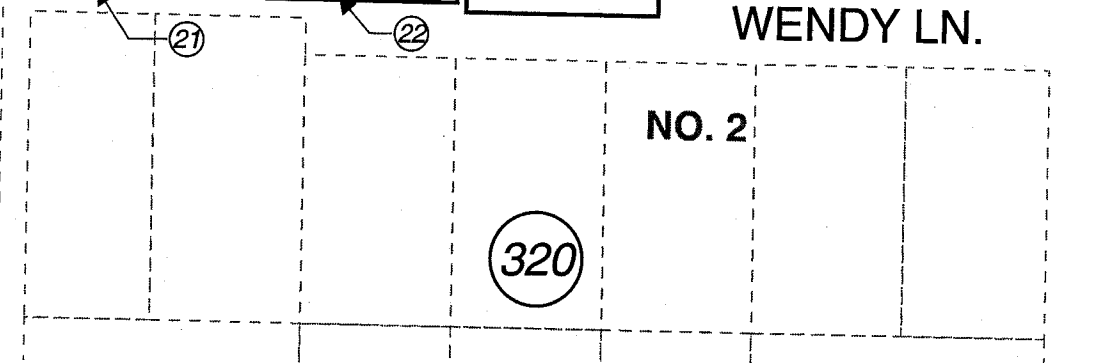
**WORTHAM AND HANS SUBDIVISION**

530

680

GOI

BE



WENDY LN.

GASWELL RD.

WILLOUGHBY ST.

HAR

320

320

OCTOBER 5, 2004

For 2005 assessment roll		
Delete	Add	Revise
To		
2	48,49	



Assessor's Map  
Kenai Peninsula Borough

- JOURNEYS END SUB NO 1 KN0720028
- JOURNEYS END SUB NO 2 KN0720029
- JOURNEYS END SUB NO 4 KN0760024
- JOURNEYS END SUB NO 8 KN0820124
- WORTHAM & HANS SUB NO 2 KN0850207
- RICH SUB KN0860199
- WORTHAM & HANS SUB NO 3 KN0890026
- JOURNEYS END SUB NO 9 KN2004076

This map is prepared for Kenai Peninsula Borough Assessing Dept. use only and is not intended for conveyance nor is it a survey.

Note- Assessor's block Numbers Shown in Ellipses  
Assessor's Parcel Numbers Shown in Circles