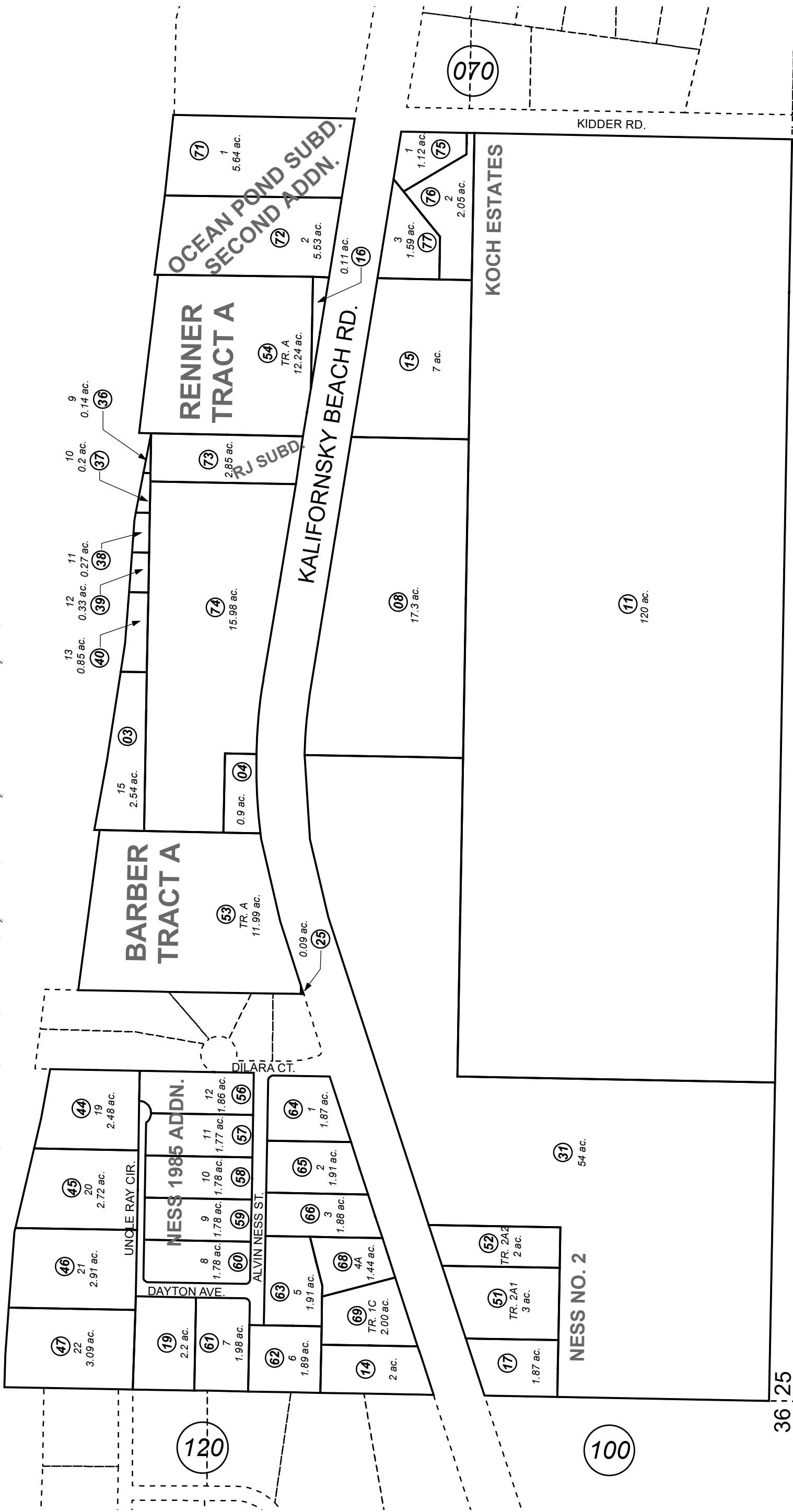


POR. SEC. 25, T04N, R12W, S.M.

131-110



36 25

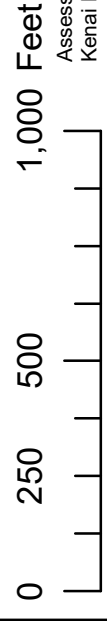
25 24

DECEMBER 18, 2019

For 2020 assessment roll	
Delete	Revise
48	75-77

- JACKINSKY PROPERTY KN0001539
- NESS NO 2 SUB KN0800077
- BARBER TRACT SUB KN0830272
- RENNER TRACT SUB KN0830275
- NESS SUB 1985 ADDN KN0860193
- NESS SUB 1985 ADDN KN0860198
- NESS SUB 2002 ADDN KN2002118
- OCEAN POND SUB KN2005068
- RJ SUBD KN2008038
- OCEAN POND SUB SECOND ADDN KN2008053
- KOCH ESTATES SUB KN2019060

100



Assessor's Map
Kenai Peninsula Borough

Note- Assessor's block Numbers Shown in Ellipses
Assessor's Parcel Numbers Shown in Circles

This map is prepared for Kenai Peninsula Borough Assessing Dept. use only and is not intended for conveyance nor is it a survey.