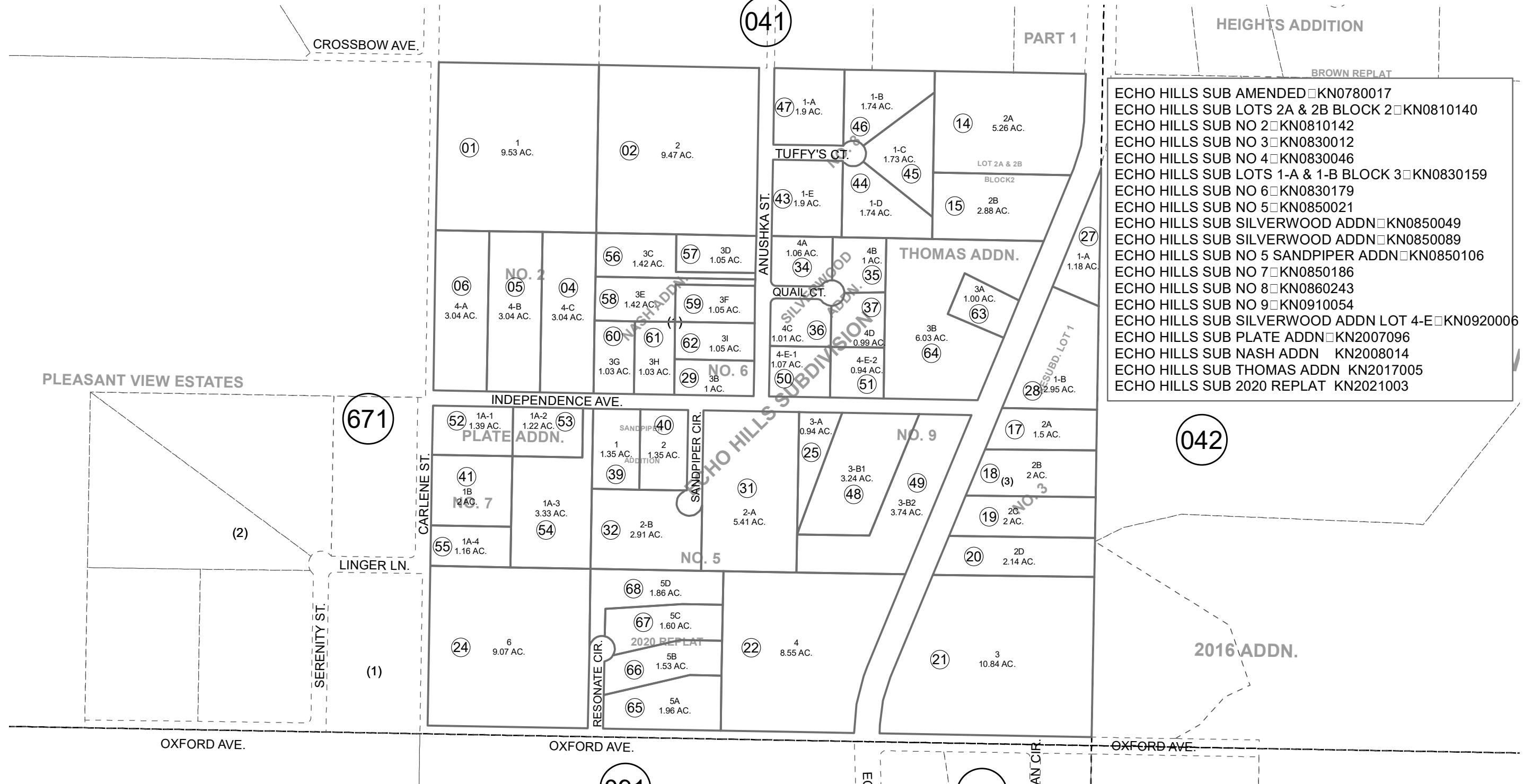


SE 1/4 SEC. 10, T04N, R11W, S.M.

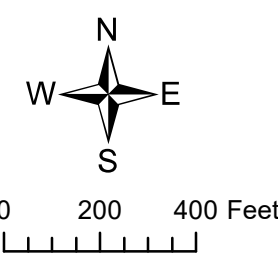
131-670



- BROWN REPLAT
- ECHO HILLS SUB AMENDED KN0780017
 - ECHO HILLS SUB LOTS 2A & 2B BLOCK 2 KN0810140
 - ECHO HILLS SUB NO 2 KN0810142
 - ECHO HILLS SUB NO 3 KN0830012
 - ECHO HILLS SUB NO 4 KN0830046
 - ECHO HILLS SUB LOTS 1-A & 1-B BLOCK 3 KN0830159
 - ECHO HILLS SUB NO 6 KN0830179
 - ECHO HILLS SUB NO 5 KN0850021
 - ECHO HILLS SUB SILVERWOOD ADDN KN0850049
 - ECHO HILLS SUB SILVERWOOD ADDN KN0850089
 - ECHO HILLS SUB NO 5 SANDPIPER ADDN KN0850106
 - ECHO HILLS SUB NO 7 KN0850186
 - ECHO HILLS SUB NO 8 KN0860243
 - ECHO HILLS SUB NO 9 KN0910054
 - ECHO HILLS SUB SILVERWOOD ADDN LOT 4-E KN0920006
 - ECHO HILLS SUB PLATE ADDN KN2007096
 - ECHO HILLS SUB NASH ADDN KN2008014
 - ECHO HILLS SUB THOMAS ADDN KN2017005
 - ECHO HILLS SUB 2020 REPLAT KN2021003

PLEASANT VIEW ESTATES

2016 ADDN.



MAY 4, 2021

For 2022 assessment roll		
Delete	Add	Revise
To		
23	65-68	

Assessor's Map
Kenai Peninsula Borough

Note- Assessor's block Numbers Shown in Ellipses
Assessor's Parcel Numbers Shown in Circles