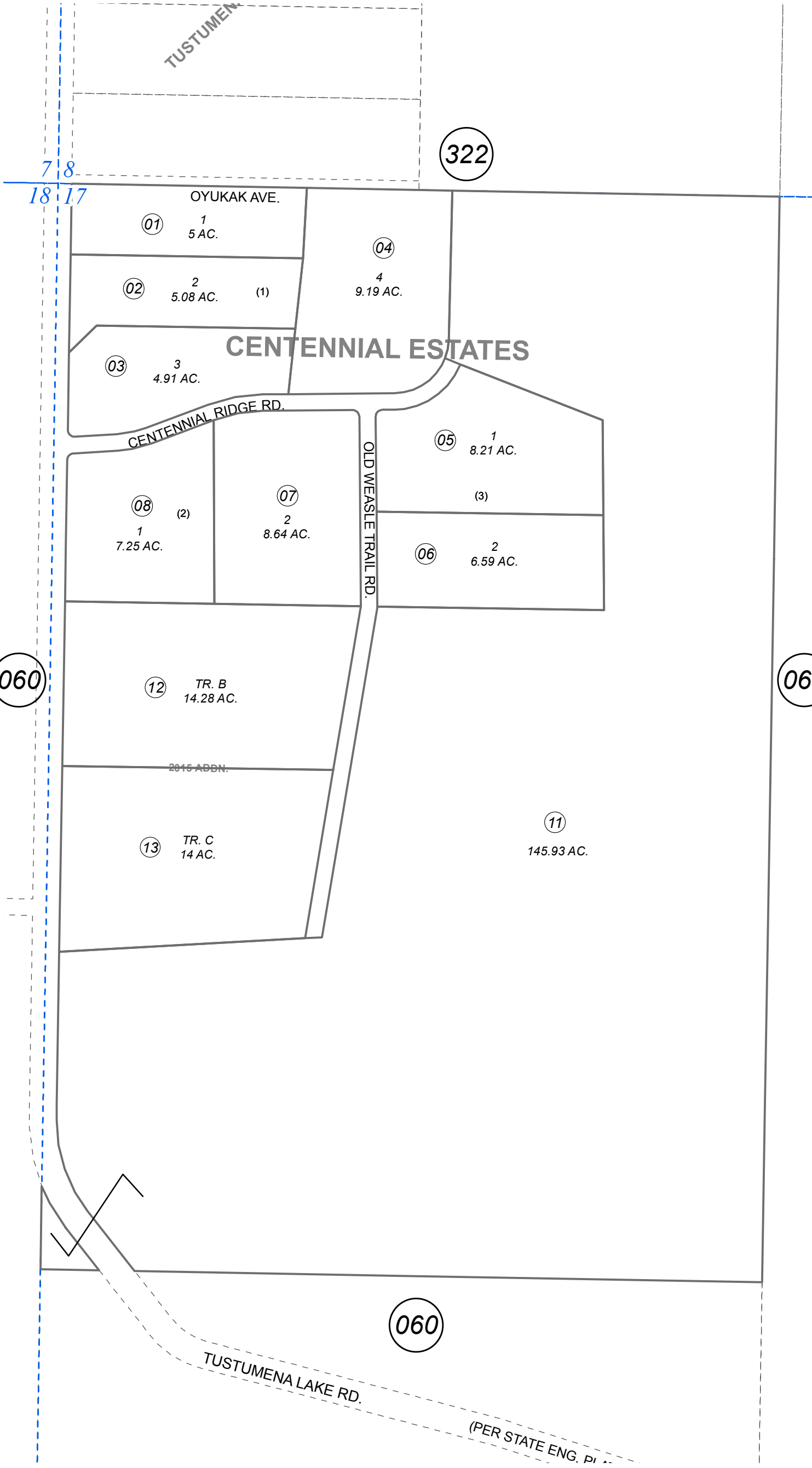


137-061

NW1/4 & N1/2 SW1/4 SEC. 17, T02N, R11W, S.M.



0 200 400 Feet

DECEMBER 10, 2015

For 2016 assessment roll		
Delete	Add	Revise
	To	
10	12,13	

This map is prepared for Kenai Peninsula Borough Assessing Dept. use only and is not intended for conveyance nor is it a survey.

Note- Assessor's block Numbers Shown in Ellipses Assessor's Parcel Numbers Shown in Circles

CENTENNIAL ESTATES KN0980059
 CENTENNIAL ESTATES #2 KN2004125
 CENTENNIAL ESTATES 2015 ADDN KN2015080

Assessor's Map
 Kenai Peninsula Borough