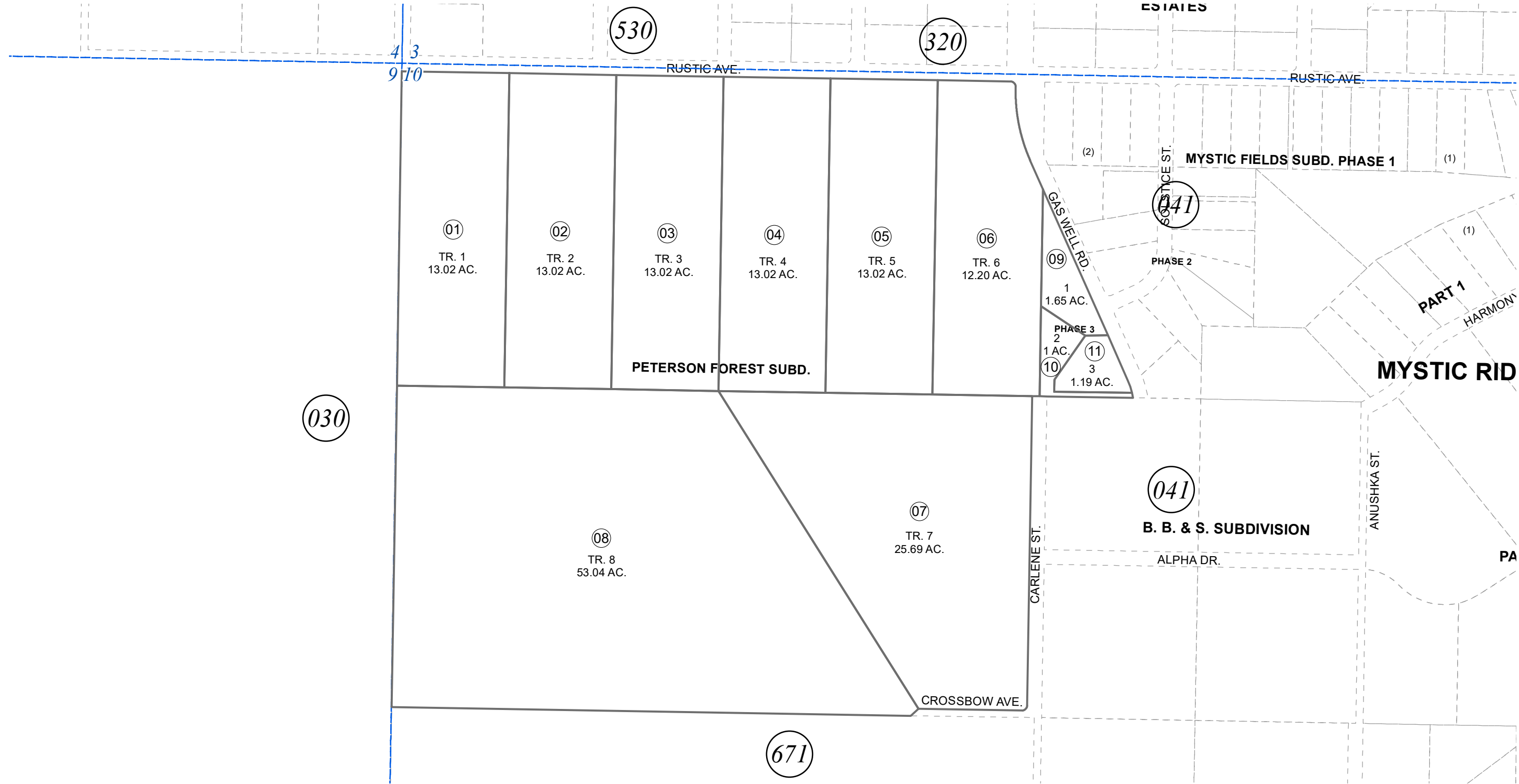


NW 1/4 SEC. 10, T04N, R11W, S.M.

131-046



APRIL 23, 2020

For 2021 assessment roll		
Delete	Add	Revise
	To	
04185	09-11	

Assessor's Map  
Kenai Peninsula Borough

PETERSON FOREST SUB KN2018035  
MYSTIC FIELDS SUBPHASE 3 KN2020014

Note- Assessor's block Numbers Shown in Ellipses  
Assessor's Parcel Numbers Shown in Circles

This map is prepared for Kenai Peninsula Borough Assessing Dept. use only and is not intended for conveyance nor is it a survey.