

BK
159

TAIL TREE AVE

30
TR. A
22.31 AC.

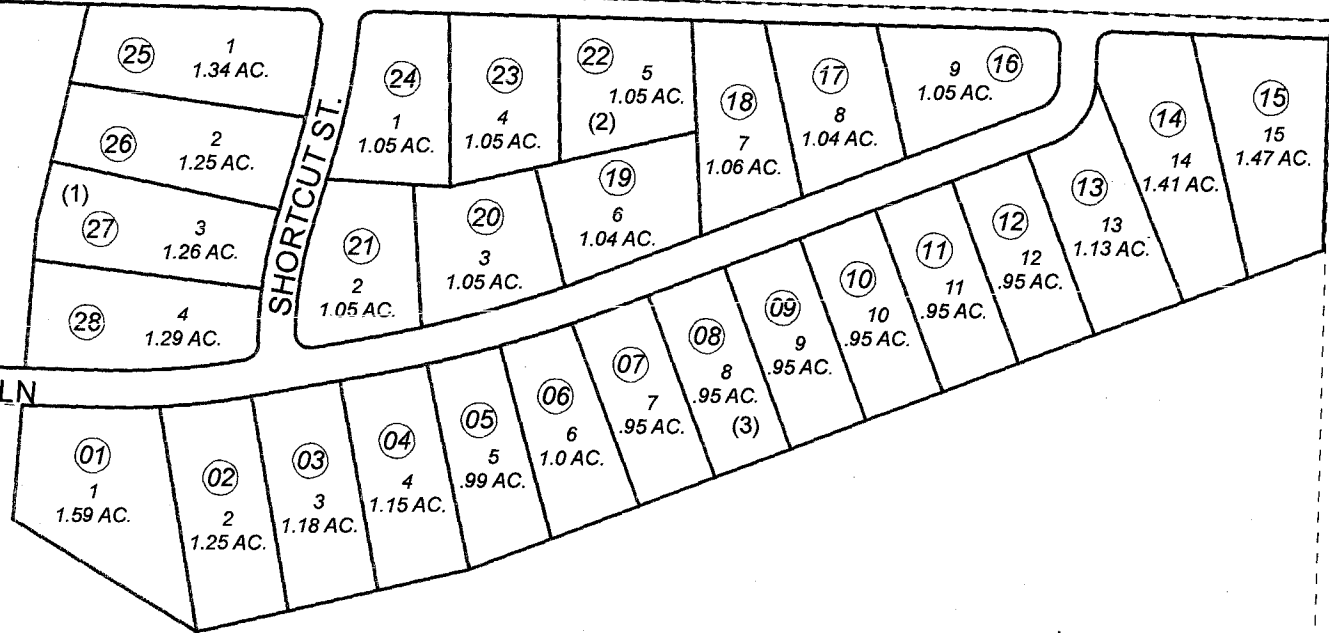
29
TR. B
7.68 AC.

SHORTCUT ST.

LONG REACH LN

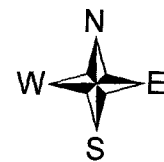
030

032



FEBRUARY 11, 2005

For 2005 assessment roll		
Delete	Add	Revise
To		
NEW PAGE		



Assessor's Map
Kenai Peninsula Borough

HM 2004043 LONG REACH SUBDIVISION

This map is prepared for Kenai Peninsula Borough Assessing Dept. use only and is not intended for conveyance nor is it a survey.
Note- Assessor's block Numbers Shown in Elipses
Assessor's Parcel Numbers Shown in Circles