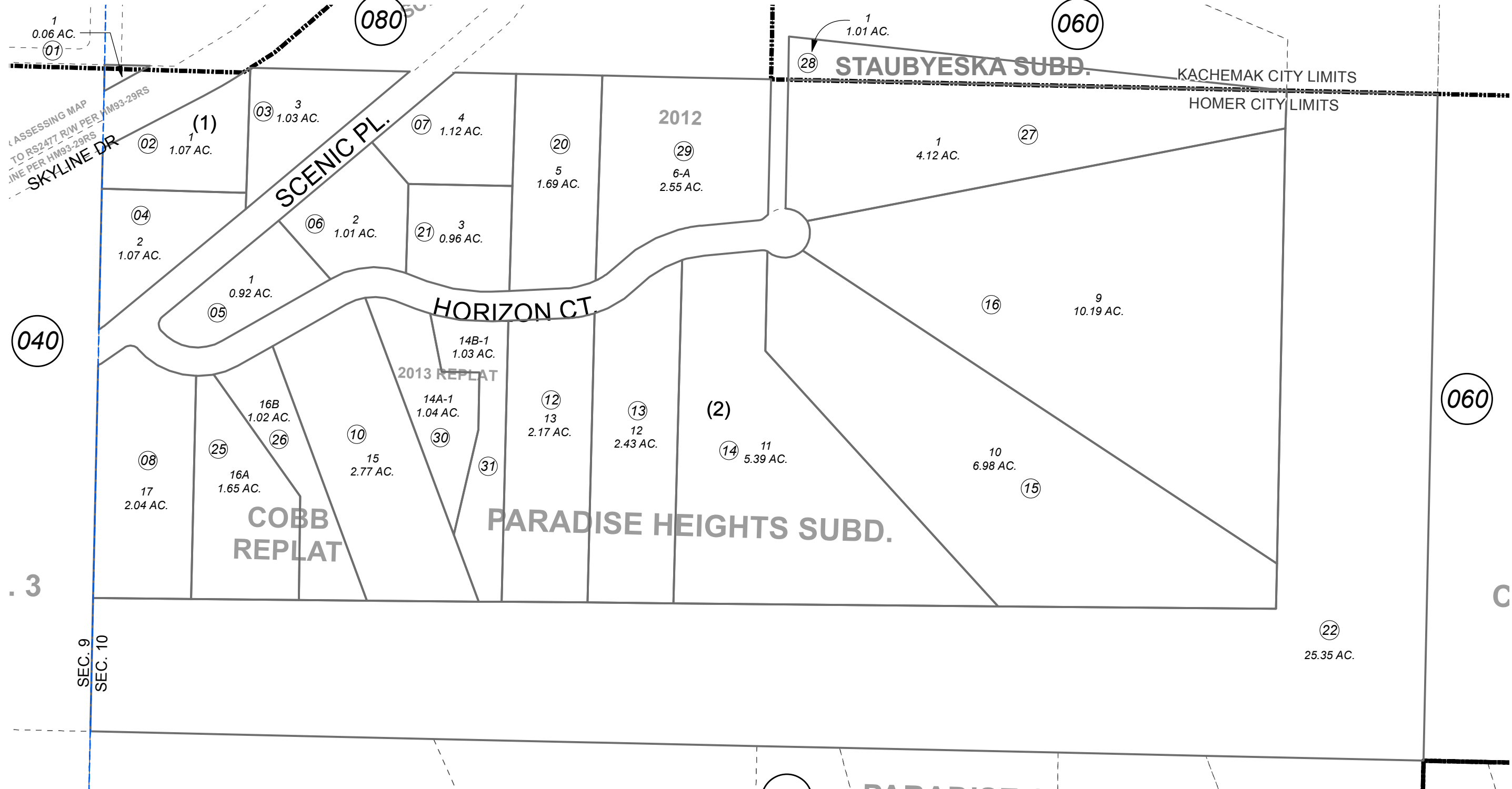


S1/2 NW1/4 SEC. 10, T06S, R13W, S.M.

174-090



ASSESSING MAP  
 TO RS2477 R/W PER HM93-29RS  
 LINE PER HM93-29RS  
 SKYLINE DR

SEC. 9  
 SEC. 10



0 50 100 200 Feet

NOVEMBER 25, 2014

For 2015 assessment roll		
Delete	Add	Revise
To		
23,24	30,31	

Assessor's Map  
 Kenai Peninsula Borough

PARADISE HEIGHTS SUB HM0750059  
 PARADISE HEIGHTS SUB LOT 14 RESUB HM0790004  
 PARADISE HEIGHTS SUB COBB REPLAT HM2007005  
 STAUBYESKA SUB HM2009020  
 PARADISE HEIGHTS SUB 2012 HM2013002  
 PARADISE HEIGHTS SUB 2013 REPLAT HM2014029

Note- Assessor's block Numbers Shown in Ellipses  
 Assessor's Parcel Numbers Shown in Circles

This map is prepared for Kenai Peninsula Borough Assessing Dept. use only and is not intended for conveyance nor is it a survey.