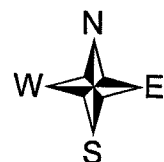
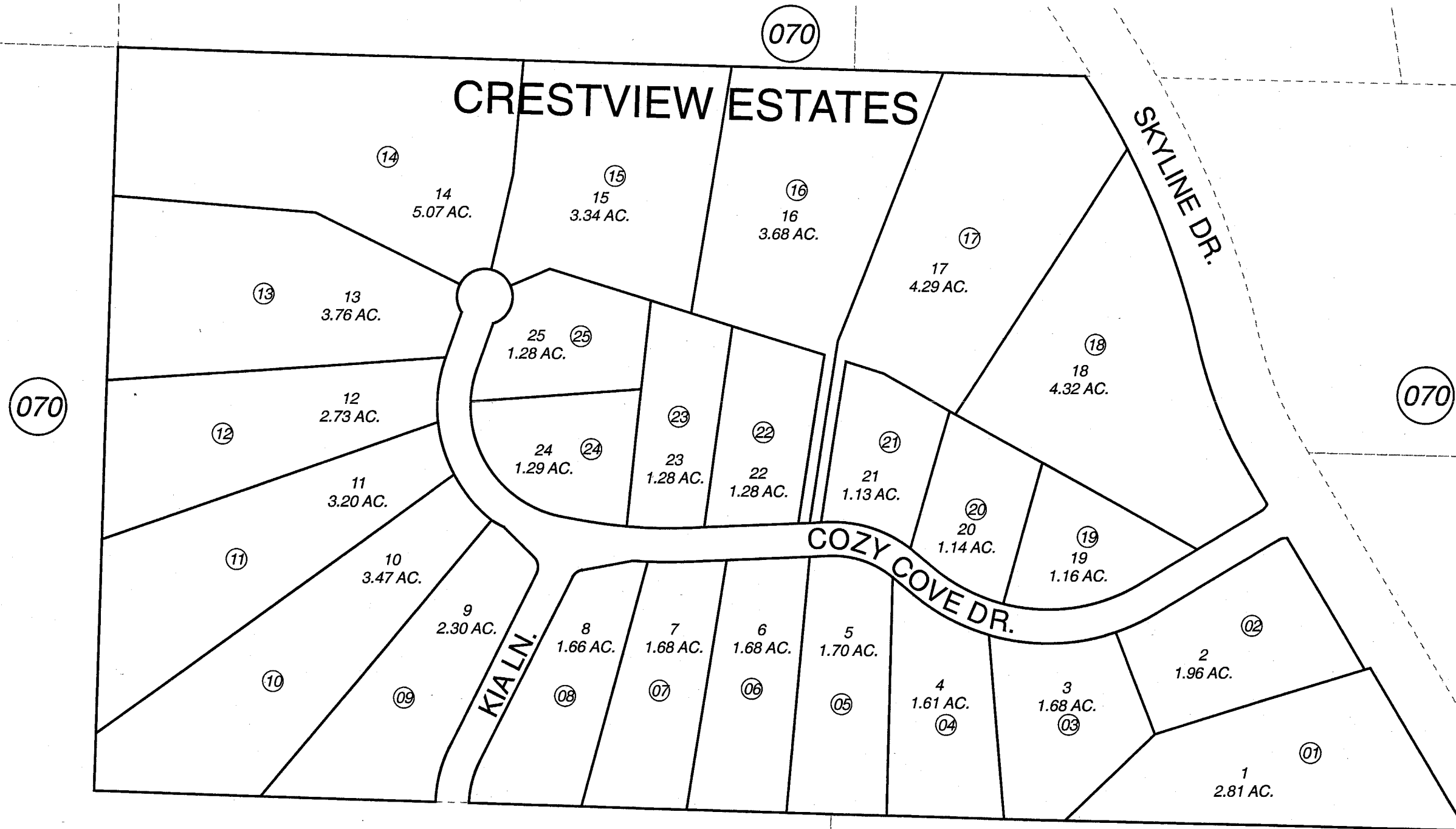


POR. N1/2 SE1/4 SEC. 7, T06S, R13W, S.M.

173-071

# CRESTVIEW ESTATES



SEPTEMBER 16, 2005

For 2006 assessment roll

Delete	Add	Revise
--------	-----	--------

To

NEW PAGE

Assessor's Map  
Kenai Peninsula Borough

CRESTVIEW ESTATES SUB HM2005033

This map is prepared for Kenai Peninsula Borough Assessing Dept. use only and is not intended for conveyance nor is it a survey.

Note- Assessor's block Numbers Shown in Ellipses  
Assessor's Parcel Numbers Shown in Circles