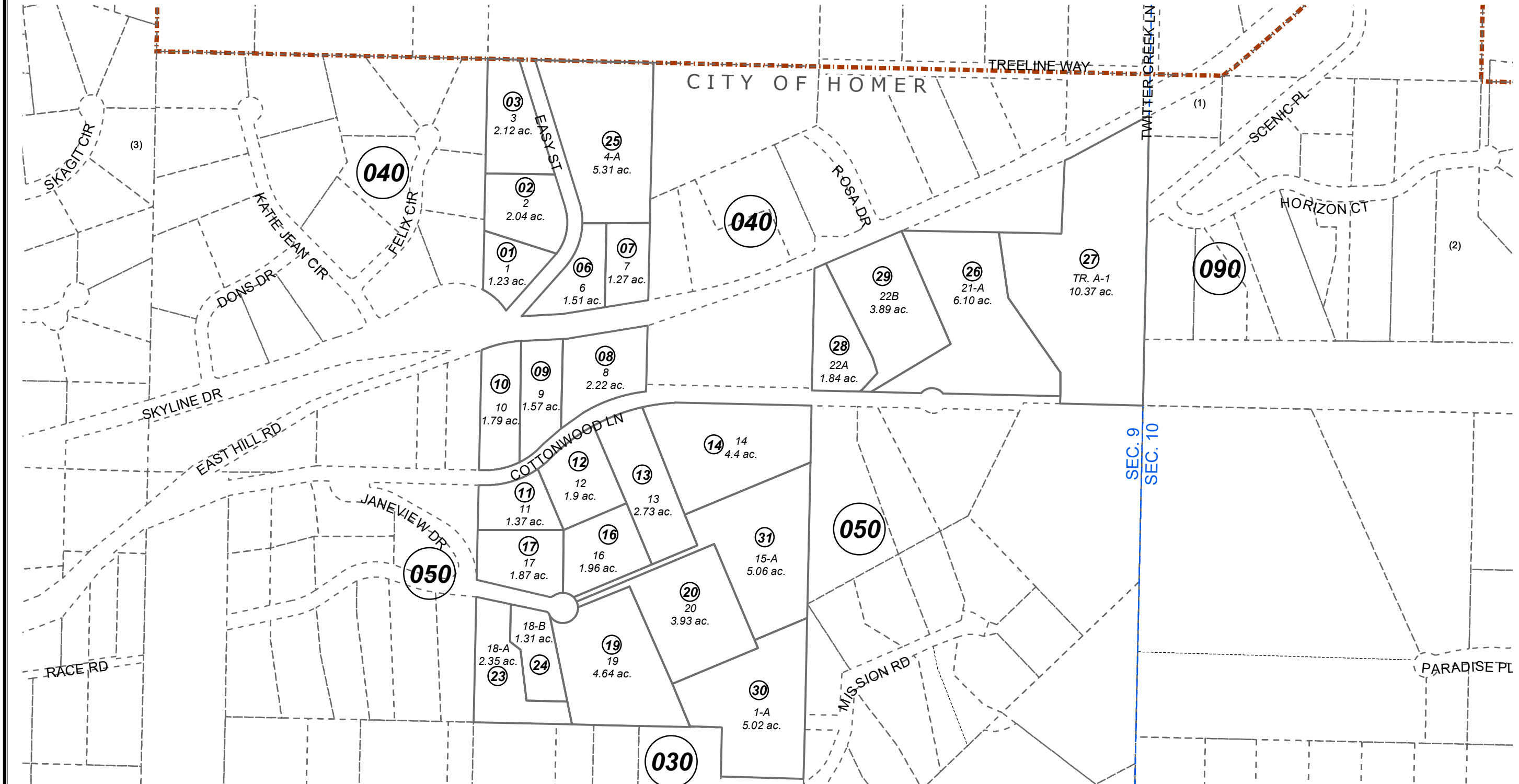


POR. SEC. 9, T06S, R13W, S.M.

174-051

CITY OF HOMER



DECEMBER 23, 2022

For 2023 assessment roll

Delete	Add	Revise
To		
03001, 05115	05130,31	

Assessor's Map
Kenai Peninsula Borough

EKER ESTATES SUB HM9000043
 EKER ESTATES SUB NO 2 HM2002014
 EKER ESTATES SUB KYLE ADDN HM2009055
 EKER ESTATES NO 3 REPLAT 2010 HM2010058
 EKER ESTATES HANDLEY ADDN HM2012030
 EKER ESTATES LUJAN 2022 REPLAT HM2022028

This map is prepared
 for Kenai Peninsula
 Borough Assessing Dept.
 use only and is not
 intended for conveyance
 nor is it a survey.

Note- Assessor's block Numbers Shown in Ellipses
 Assessor's Parcel Numbers Shown in Circles



0 200 400 Feet