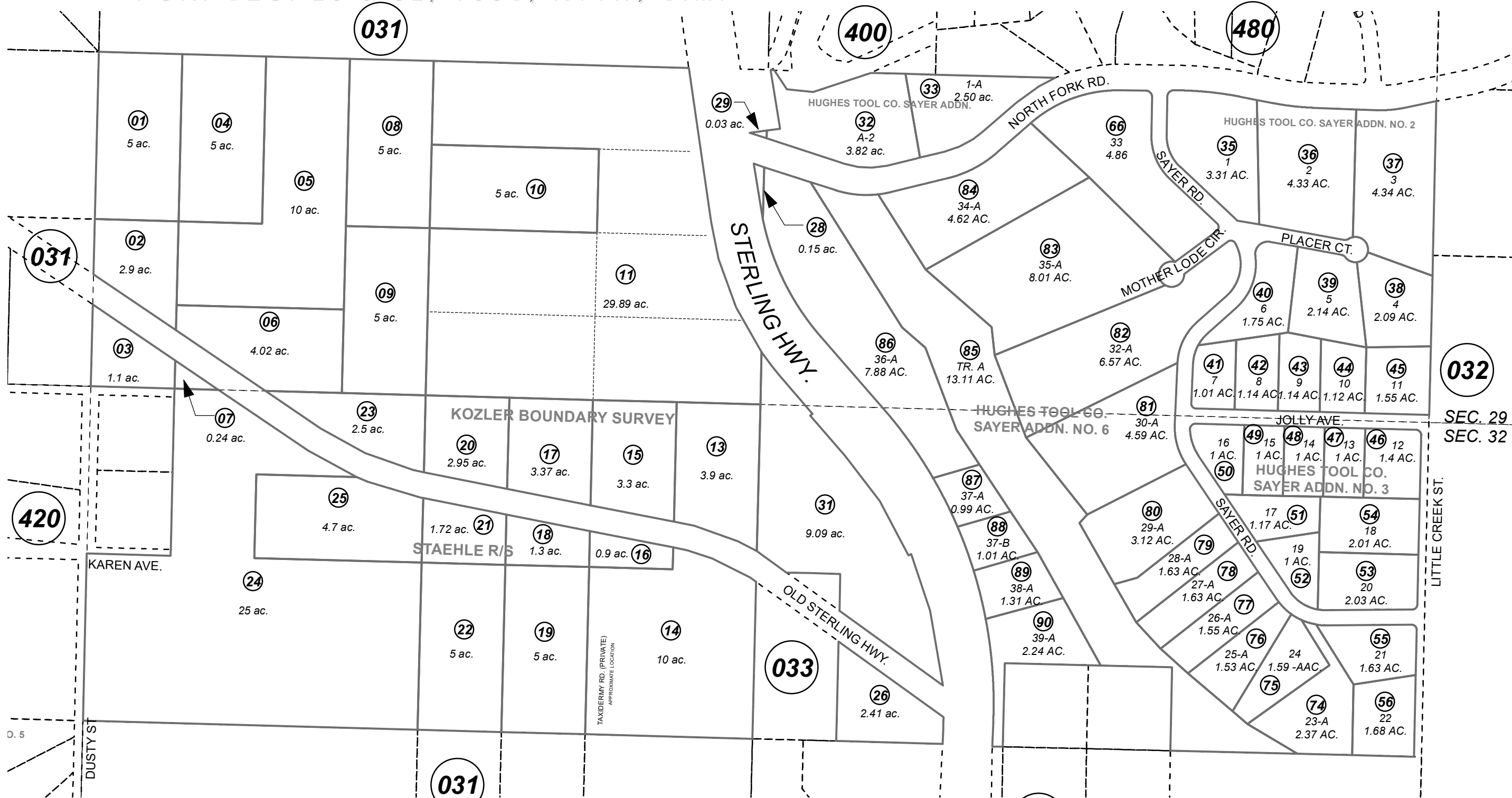


POR. SEC. 29 & 32, T05S, R14W, S.M.

171-070



MAY 6, 2021

For 2022 assessment roll		
Delete	Add	Revise
		11
(ACREAGE CHANGE)		



0 200 400 Feet

Assessor's Map  
Kenai Peninsula Borough

HUGHES TOOL CO SAYER ADDN HM2002070  
 HUGHES TOOL CO SAYER ADDN NO 2 HM2005038  
 HUGHES TOOL CO SAYER ADDN NO 3 HM2006019  
 HUGHES TOOL CO SAYER ADDN NO 6 HM2007110  
 RECORD OF SURVEY HM2021003

This map is prepared for Kenai Peninsula Borough Assessing Dept. use only and is not intended for conveyance nor is it a survey.

Note- Assessor's block Numbers Shown in Ellipses  
 Assessor's Parcel Numbers Shown in Circles