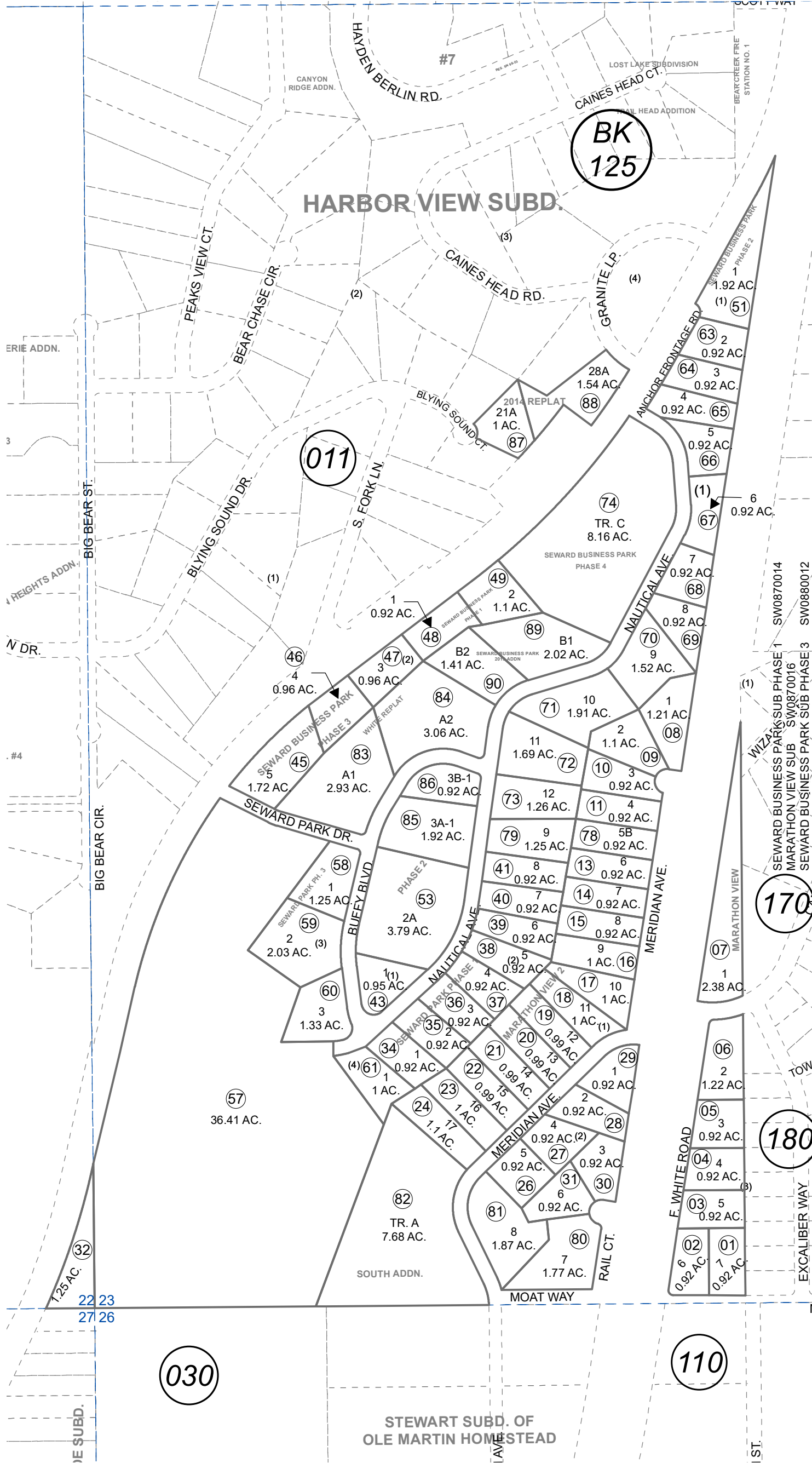


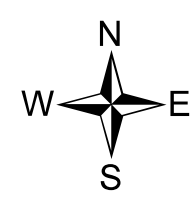
POR. SEC. 22 & 23, T01N, R11W, S.M.

144-013



JULY 19, 2019

For 2020 assessment roll	
Delete	Revise
To	
75	89,90



This map is prepared for Kenai Peninsula Borough Assessing Dept. use only and is not intended for conveyance nor is it a survey.

Note- Assessor's block Numbers Shown in Ellipses
Assessor's Parcel Numbers Shown in Circles

Assessor's Map
Kenai Peninsula Borough