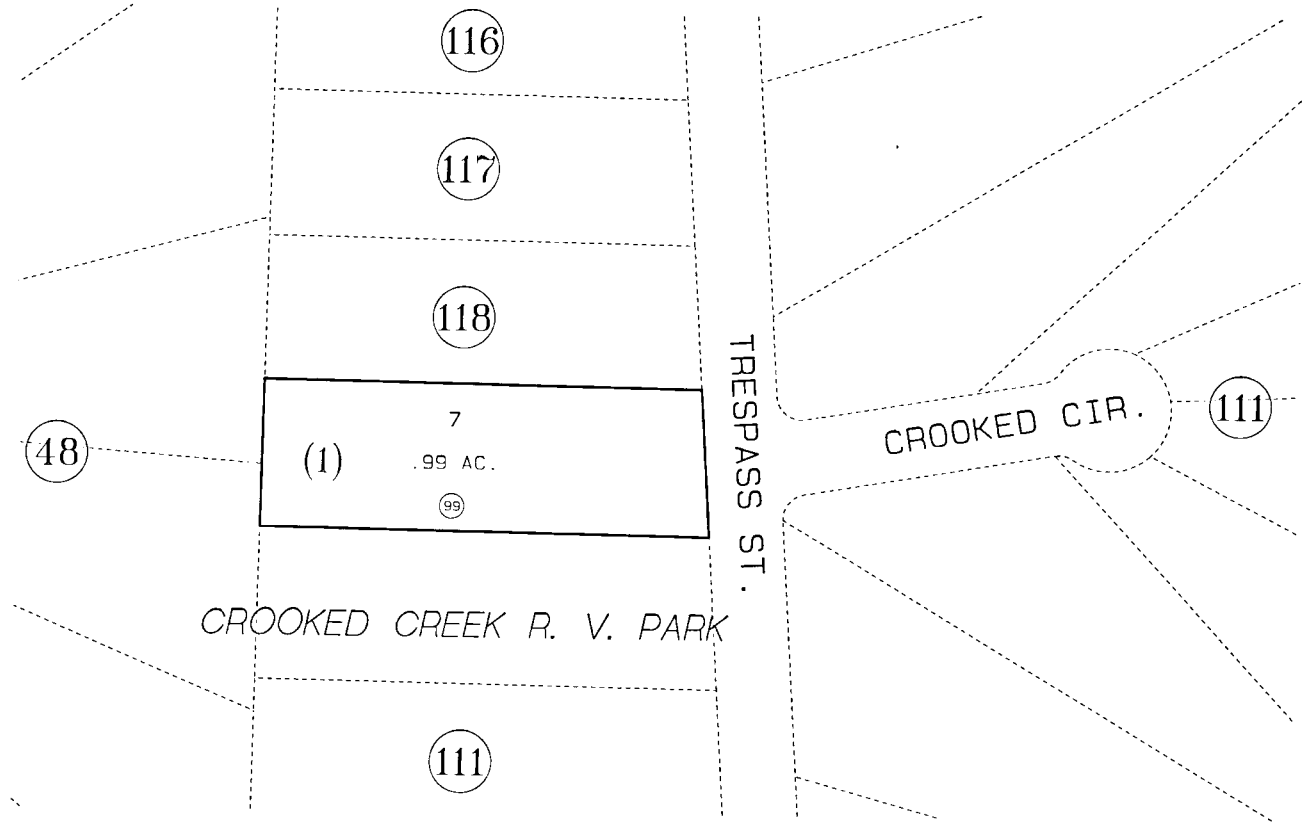


PORTION OF SEC. 25, T3N, R12W, SEWARD MERIDIAN

133-119

- 56 SPACE 56
- 57 SPACE 57
- 58 SPACE 58
- 59 SPACE 59
- 60 SPACE 60
- 61 SPACE 61
- 62 SPACE 62
- 63 SPACE 63



DATE: NOV. 25, 1996

FOR 1997 ASSESSMENT ROLL		
DELETE	ADD	REVISED
TO		
NEW PAGE		

Assessor's Map
 Kenai Peninsula Borough KINGS RUN SUB LOT 7 BLOCK 1 KN850128

THIS MAP IS PREPARED FOR KENAI PENINSULA BOROUGH ASSESSING DEPT. USE ONLY AND IS NOT INTENDED FOR ANY OTHER USE OR REPRESENTATION

NOTE - Assessor's Block Numbers Shown in Ellipses
 Assessor's Parcel Numbers Shown in Circles