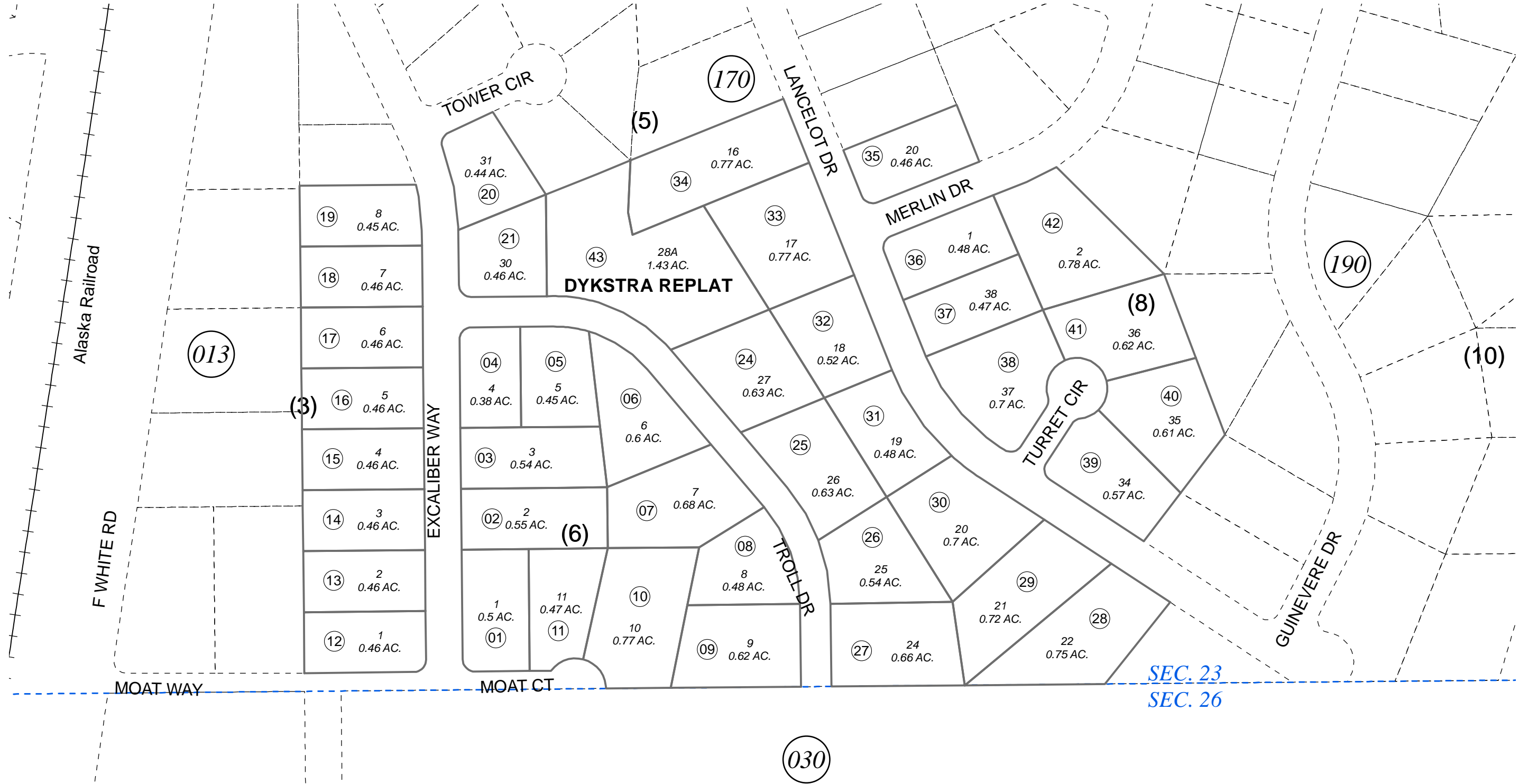


POR. SE1/4 SEC. 23, T01N, R01W, S.M.

144-180



SEC. 23  
SEC. 26

NOVEMBER 20, 2013

For 2014 assessment roll		
Delete	Add	Revise
	To	
22,23	43	



0 50 100 200 Feet

Assessor's Map  
Kenai Peninsula Borough

CAMELOT BY THE SEA SUBD SW0000076  
CAMELOT BY THE SEA SUBD DYKSTRA REPLAT SW2013013

Note- Assessor's block Numbers Shown in Elipses  
Assessor's Parcel Numbers Shown in Circles

This map is prepared for Kenai Peninsula Borough Assessing Dept. use only and is not intended for conveyance nor is it a survey.