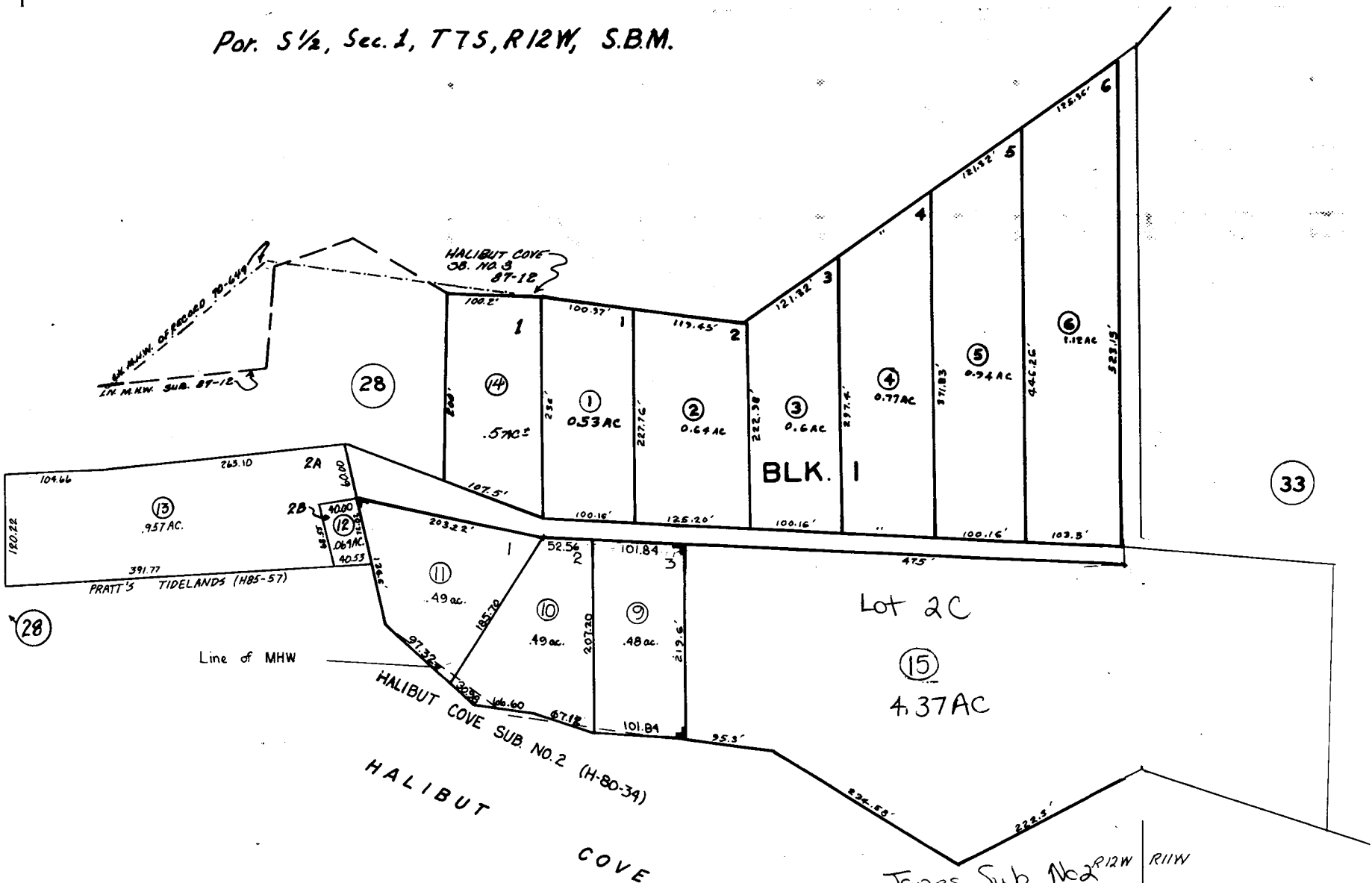


Por. 5 1/2, Sec. 1, T7S, R12W, S.B.M.

193-34



HALIBUT COVE SUB.

H 71-1062 11-2-71

Kenai Peninsula Borough, Alaska

NOTE - Assessor's Block Numbers Shown in Ellipses
Assessor's Parcel Numbers Shown in Circles