

SE1/4 & PORTION OF SW1/4 NE1/4 SEC. 14, T5N, R8W, SEWARD MERIDIAN 065-164

45

16

RIDGEWAY ST.

STERLING HWY.

22 2.34 AC

23 1.07 AC

24 1.23 AC

CJ's ACRES

PLAT WAIVER RESOLUTION 96-44

16

29 20.00 AC

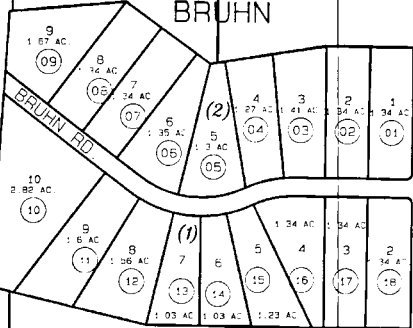
28 21.80 AC

16

PLAT WAIVER 91-15

25 78.86 AC

BRUHN



161

KAREN LN.

16



DATE: JAN. 20, 1997

FOR 1997 ASSESSMENT ROLL

DELETE	ADD	REVISED
	TO	
26	28,29	

Assessor's Map
Kenai Peninsula Borough

BRUHN KN860143
CJ'S ACRES KN880066

THIS MAP IS PREPARED FOR KENAI PENINSULA BOROUGH ASSESSING DEPT. USE ONLY AND IS NOT INTENDED FOR ANY OTHER USE OR REPRESENTATION

NOTE - Assessor's Block Numbers Shown In Ellipses
Assessor's Parcel Numbers Shown In Circles