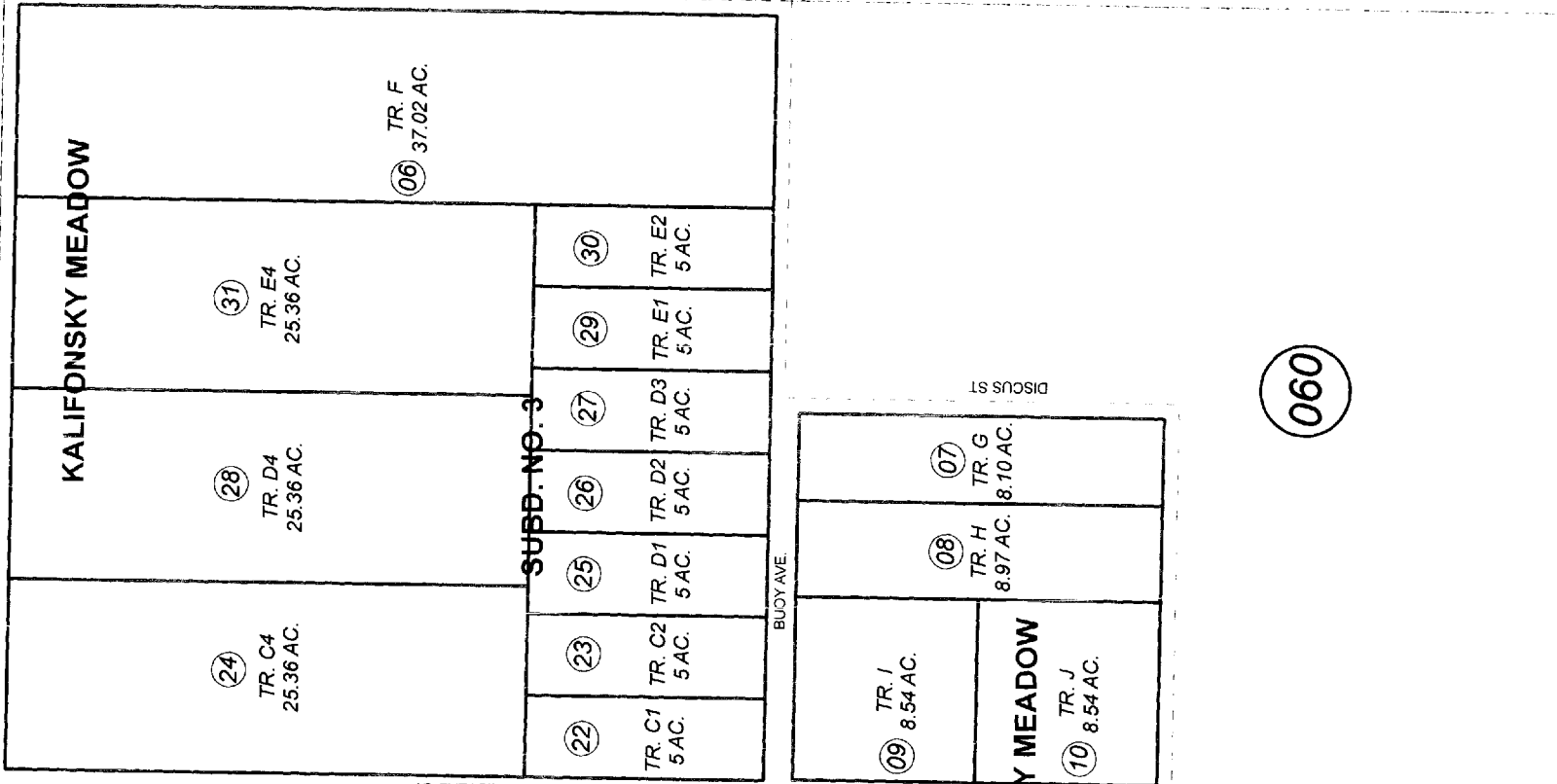
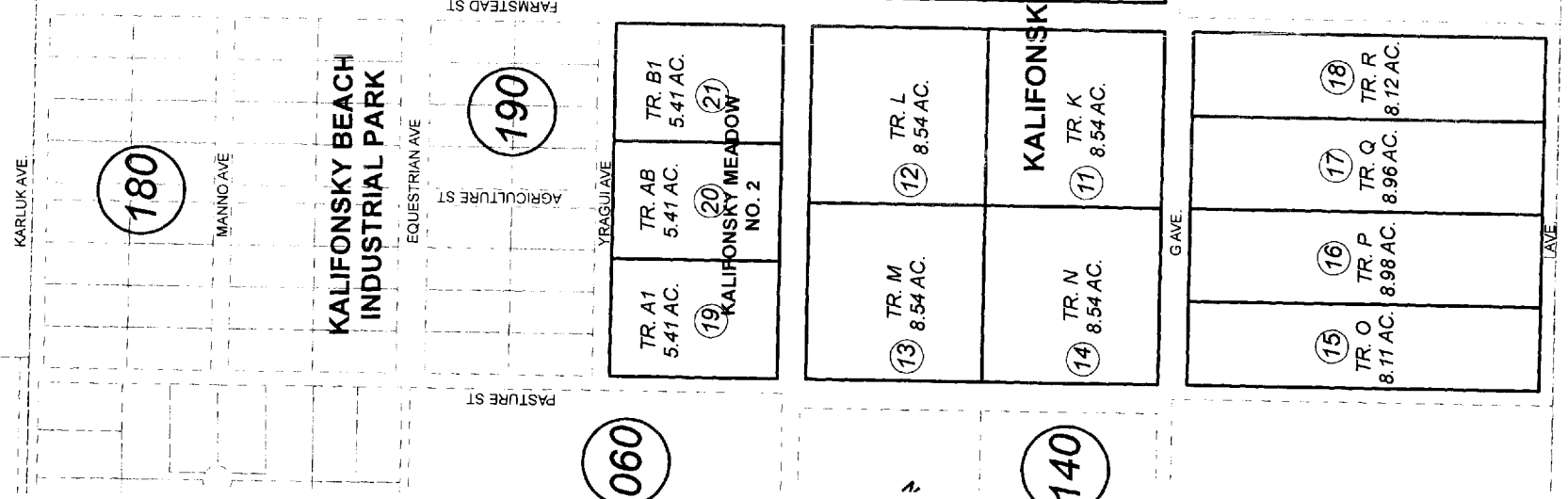


055-241

POR. SEC. 29, T05N, R11W, S.M.



060

020

181

180

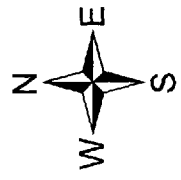
190

060

140

060

060



For 2009 assessment roll	
Delete	Add
Revise	
To	
3-5	22-31

JUNE 16, 2008

Assessor's Map
Kenal Peninsula Borough

KALIFONSKY MEADOW SUB KN2005043
KALIFONSKY MEADOW SUB NO 2 KN2007076
KALIFONSKY MEADOW SUB NO 3 KN2008009

Note- Assessor's block Numbers Shown in Ellipses
Assessor's Parcel Numbers Shown in Circles

This map is prepared
for Kenal Peninsula
Borough Assessing Dept.
use only and is not
intended for conveyance
nor is it a survey.