

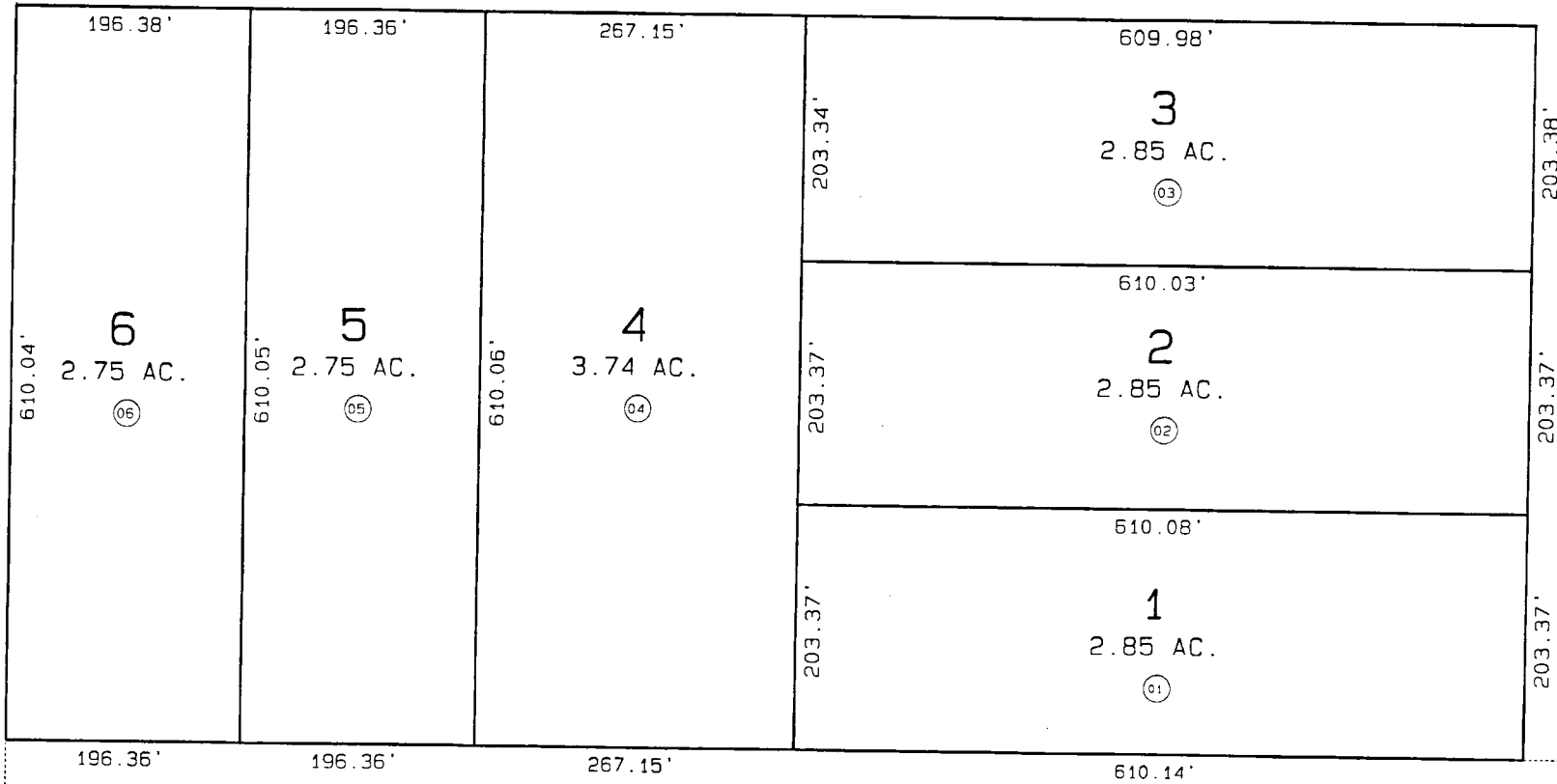
N1/2NE1/4 SEC. 24, T05N, R10W, S.M.

ARROWHEAD ESTATES KN990021

058-133

032

# ARROWHEAD AVE.



JIM DAHLER RD.

BK 63

032

DATE: AUG. 5, 1999  
 FOR 2000 ASSESSMENT ROLL

DELETE	ADD	REVISED
--------	-----	---------

TO  
NEW  
PAGE

# ARROWHEAD ESTATES

Assessor's Map  
Kenai Peninsula Borough

032

THIS MAP IS PREPARED FOR KENAI PENINSULA BOROUGH ASSESSING DEPT. USE ONLY AND IS NOT INTENDED FOR CONVEYANCE. NOR IS IT A SURVEY.

NOTE - Assessor's Block Numbers Shown in Ellipses  
Assessor's Parcel Numbers Shown in Circles