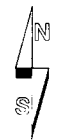
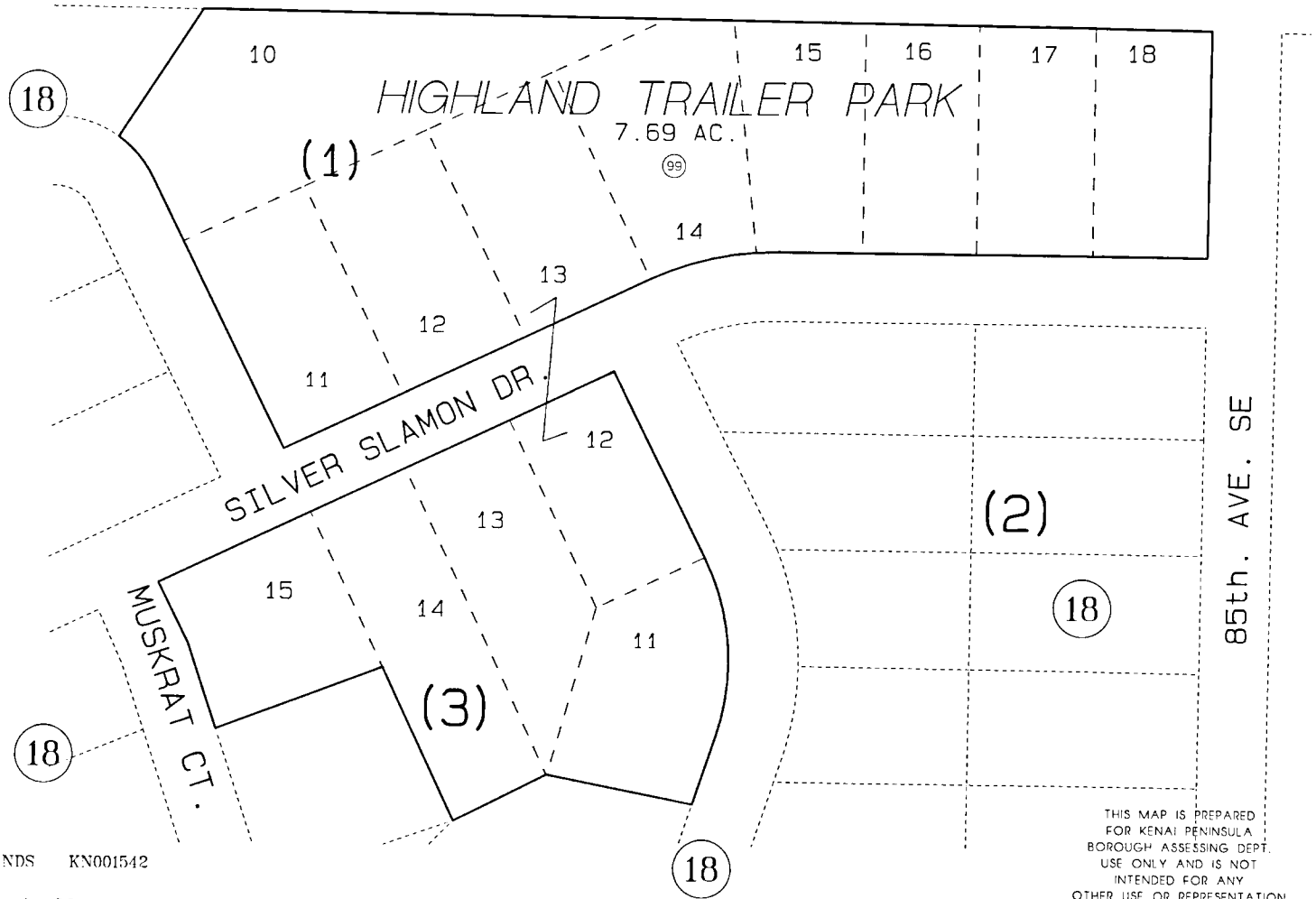


- (01) SPACE 01 (18) SPACE 18 (35) SPACE 35
- (02) SPACE 02 (19) SPACE 19 (36) SPACE 36
- (03) SPACE 03 (20) SPACE 20 (37) SPACE 37
- (04) SPACE 04 (21) SPACE 21 (38) SPACE 38
- (05) SPACE 05 (22) SPACE 22 (39) SPACE 39
- (06) SPACE 06 (23) SPACE 23 (40) SPACE 40
- (07) SPACE 07 (24) SPACE 24 (41) SPACE 41
- (08) SPACE 08 (25) SPACE 25 (42) SPACE 42
- (09) SPACE 09 (26) SPACE 26 (43) SPACE 43
- (10) SPACE 10 (27) SPACE 27 (44) SPACE 44
- (11) SPACE 11 (28) SPACE 28
- (12) SPACE 12 (29) SPACE 29
- (13) SPACE 13 (30) SPACE 30
- (14) SPACE 14 (31) SPACE 31
- (15) SPACE 15 (32) SPACE 32
- (16) SPACE 16 (33) SPACE 33
- (17) SPACE 17 (34) SPACE 34

(47)

K ST. S.E.



1" = 100'

DATE: JULY 30, 1996

FOR 19 97 ASSESSMENT ROLL		
DELETE	ADD	REVISED
TO		
NEW	PAGE	

HIGHLANDS KN001542

Assessor's Map
Kenai Peninsula Borough

THIS MAP IS PREPARED FOR KENAI PENINSULA BOROUGH ASSESSING DEPT. USE ONLY AND IS NOT INTENDED FOR ANY OTHER USE OR REPRESENTATION

NOTE - Assessor's Block Numbers Shown In Ellipses
Assessor's Parcel Numbers Shown In Circles