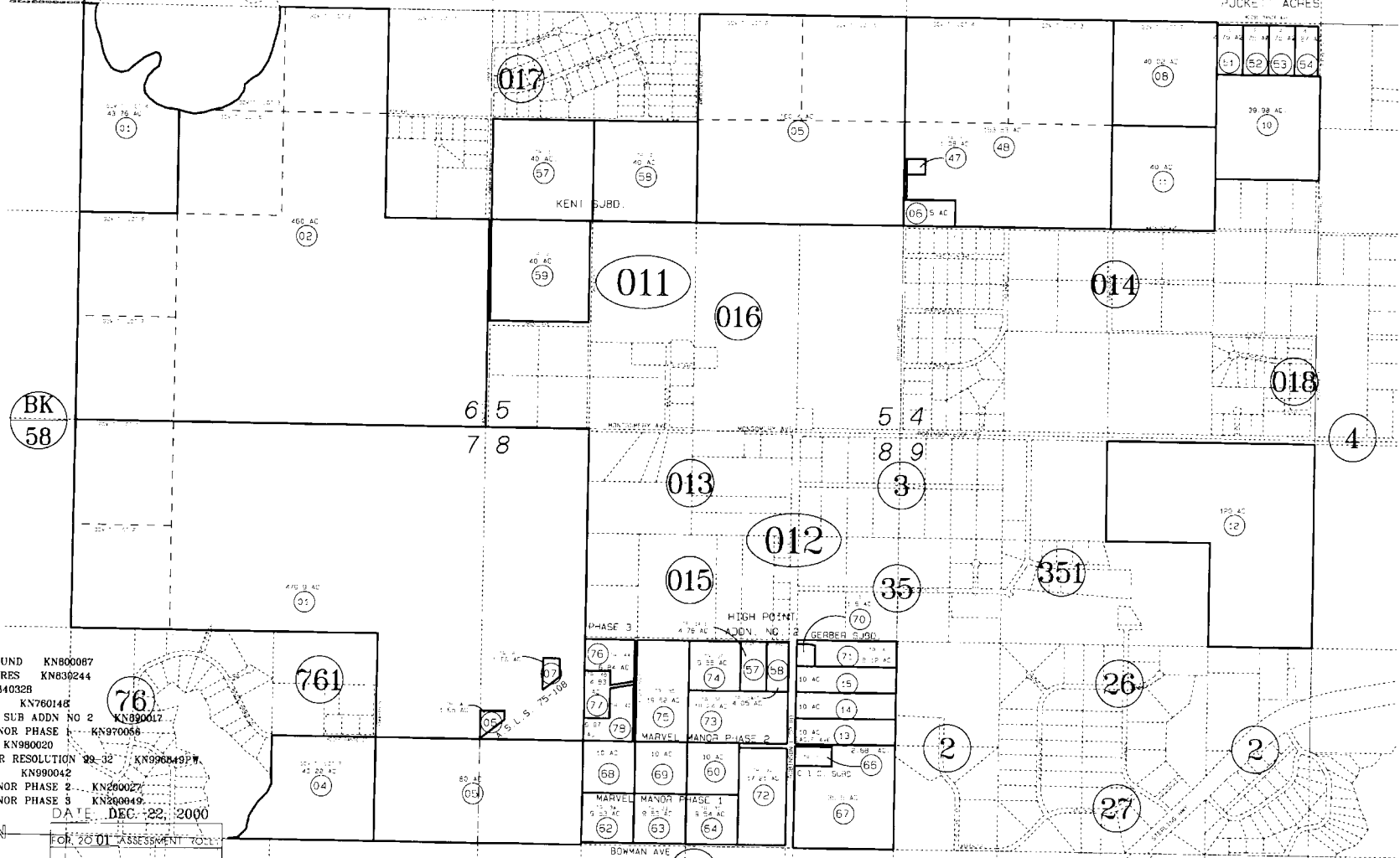


SEC. 4-9, T5N, R9W, SEWARD MERIDIAN

BK  
25

063-010

PUCKETT ACRES



HIGHER GROUND KN800087  
 PUCKETT ACRES KN830244  
 KENT KN840328  
 ASLS 75-108 KN760148  
 HIGH POINT SUB ADDN NO 2 KN890017  
 MARVEL MANOR PHASE 1 KN970056  
 C.I.C. SUB KN980020  
 PLAT WAIVER RESOLUTION 89-32 KN996849 P.W.  
 GERBER SUB KN990042  
 MARVEL MANOR PHASE 2 KN200027  
 MARVEL MANOR PHASE 3 KN200049  
 DATE DEC. 22, 2000

FOR 2001 ASSESSMENT ONLY		
DELETE	ADD	REVISED
	06301276	
06301208	06301277	
	06301278	

Assessor's Map  
 Kenai Peninsula Borough

THIS MAP IS PREPARED FOR KENAI PENINSULA BOROUGH ASSESSING DEPT. USE ONLY AND IS NOT INTENDED FOR CONVEYANCE NOR IS IT A SURVEY

NOTE - Assessor's Block Numbers Shown in Ellipses  
 Assessor's Parce Numbers Shown in Circles