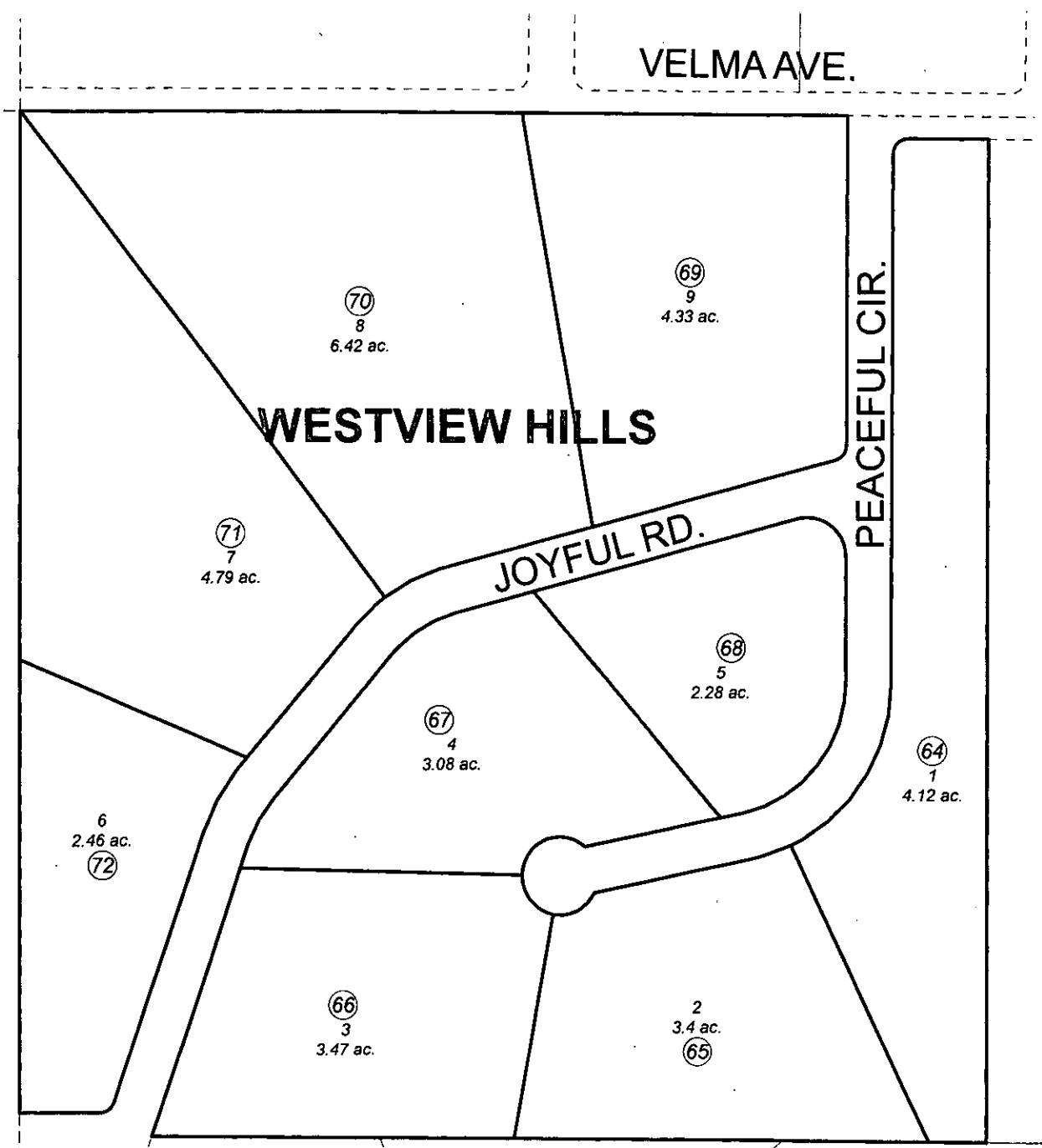
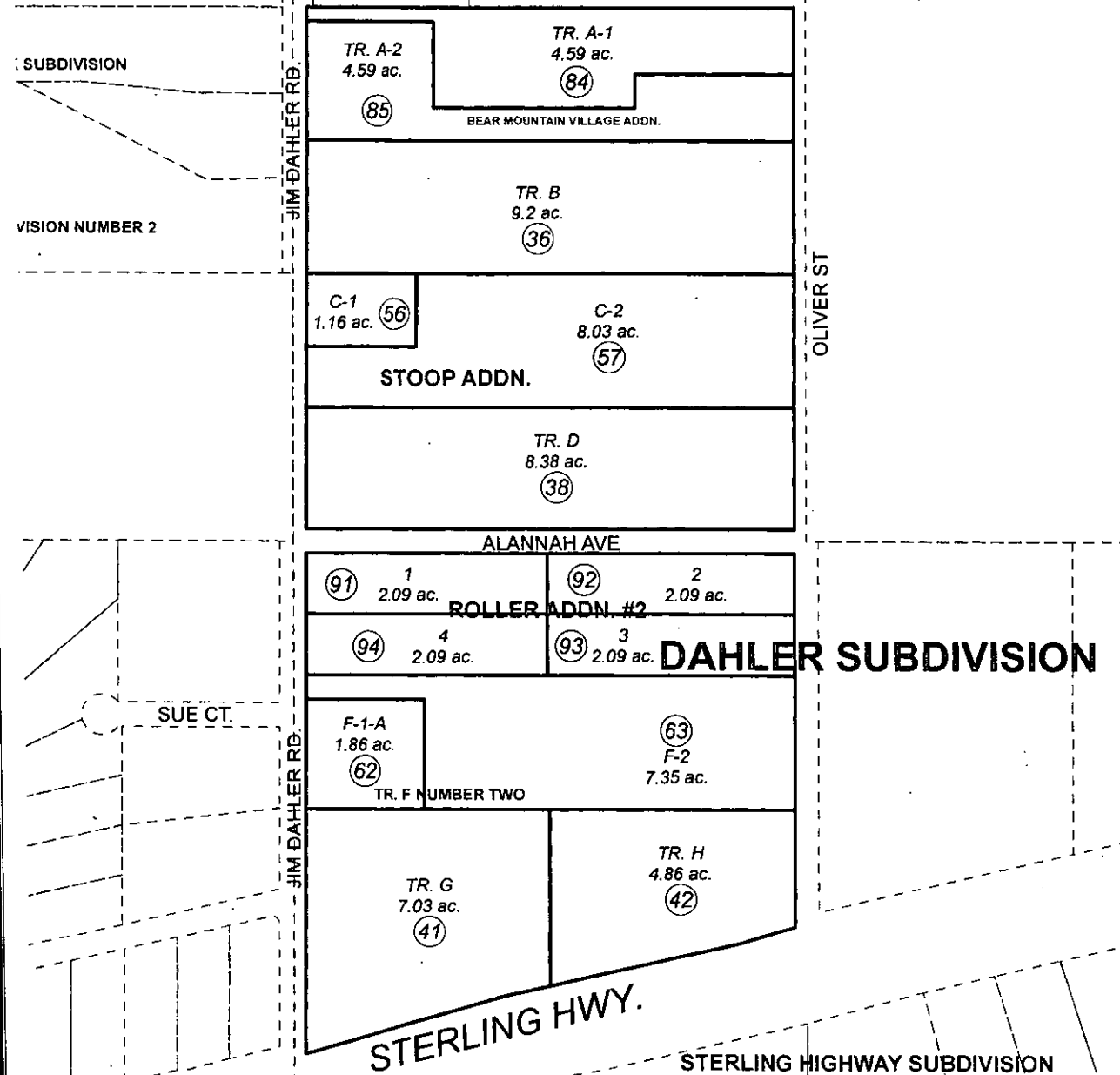


DETAIL PAGE

063-091

DETAIL A  
1" = 400'



DETAIL B  
1" = 200'



DECEMBER 23, 2011  
For 2012 assessment roll

Delete	Add	Revise
To		
091-89, 90	091-91 TO -94	

Assessor's Map  
Kenai Peninsula Borough

This map is prepared for Kenai Peninsula Borough Assessing Dept. use only and is not intended for conveyance nor is it a survey.  
Note- Assessor's block Numbers Shown in Ellipses  
Assessor's Parcel Numbers Shown in Circles