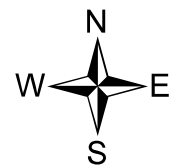
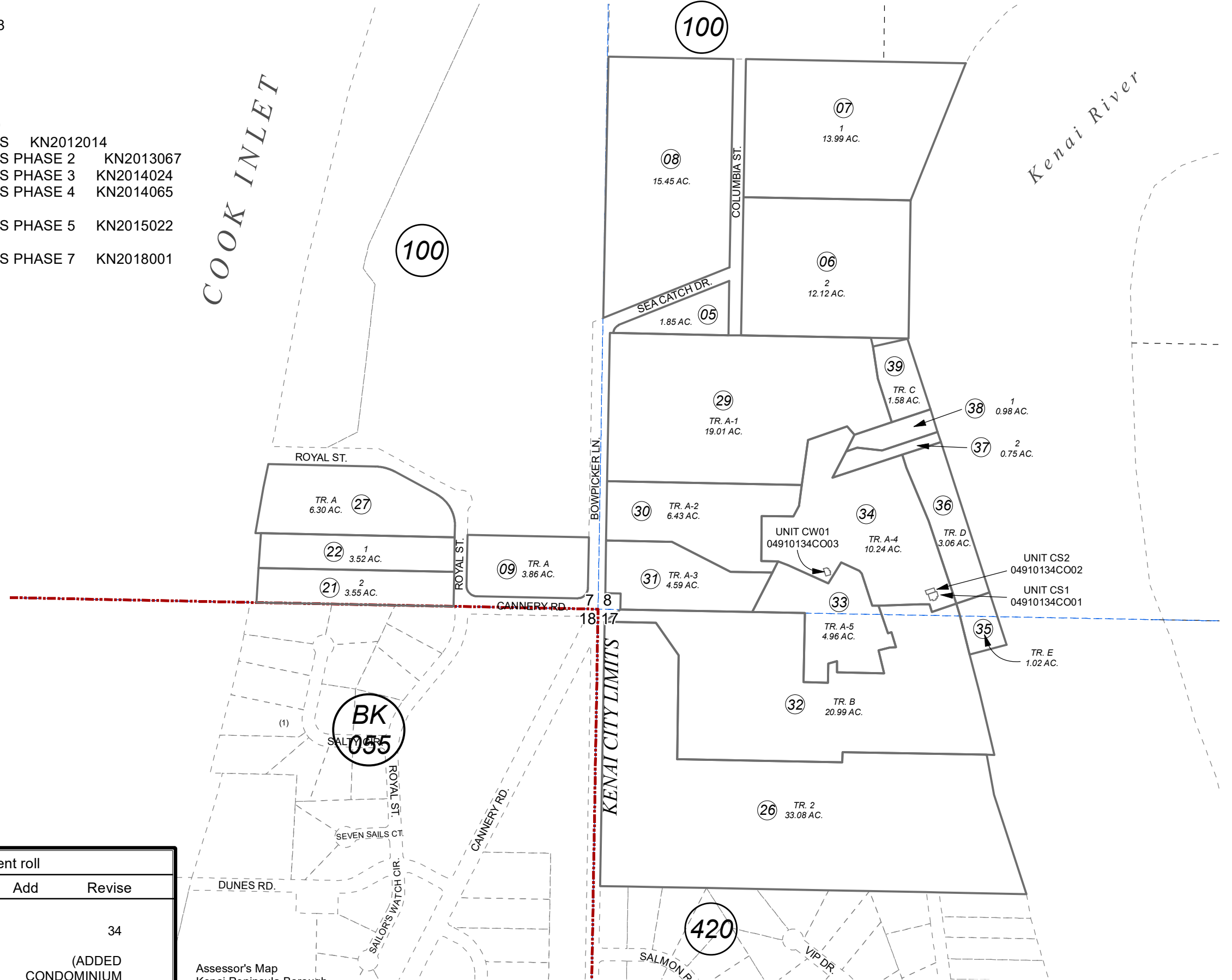


- ALASKA TIDELANDS SURVEY 115 KN0001358
- DRAGSETH SUB KN0770056
- KENAI SPIT SUB NO 2 KN0820025
- KENAI SPIT SUB KN0890012
- DRAGSETH SUB NO 2 KN0910033
- WATERFRONT ESTATES KN0950056
- KENAI LANDING COTTAGES SUB KN2005029
- KENAI LANDING COMMERCIAL CONDOMINIUMS KN2012014
- KENAI LANDING COMMERCIAL CONDOMINIUMS PHASE 2 KN2013067
- KENAI LANDING COMMERCIAL CONDOMINIUMS PHASE 3 KN2014024
- KENAI LANDING COMMERCIAL CONDOMINIUMS PHASE 4 KN2014065
- KENAI RIVER SHORES SUB KN2015029
- KENAI LANDING COMMERCIAL CONDOMINIUMS PHASE 5 KN2015022
- DRAGSETH SUB 2016 ADDN KN2016022
- KENAI LANDING COMMERCIAL CONDOMINIUMS PHASE 7 KN2018001
- KENAI LANDING SUB 2021 ADDN KN2021072
- HOME PORT AT KENAI LANDING KN2022036

This map is prepared for Kenai Peninsula Borough Assessing Dept. use only and is not intended for conveyance nor is it a survey.

Note- Assessor's block Numbers Shown in Ellipses
Assessor's Parcel Numbers Shown in Circles



0 200 400 Feet

AUGUST 12, 2022

For 2023 assessment roll		
Delete	Add	Revise
To		34
		(ADDED CONDOMINIUM REFERENCES)

Assessor's Map
Kenai Peninsula Borough