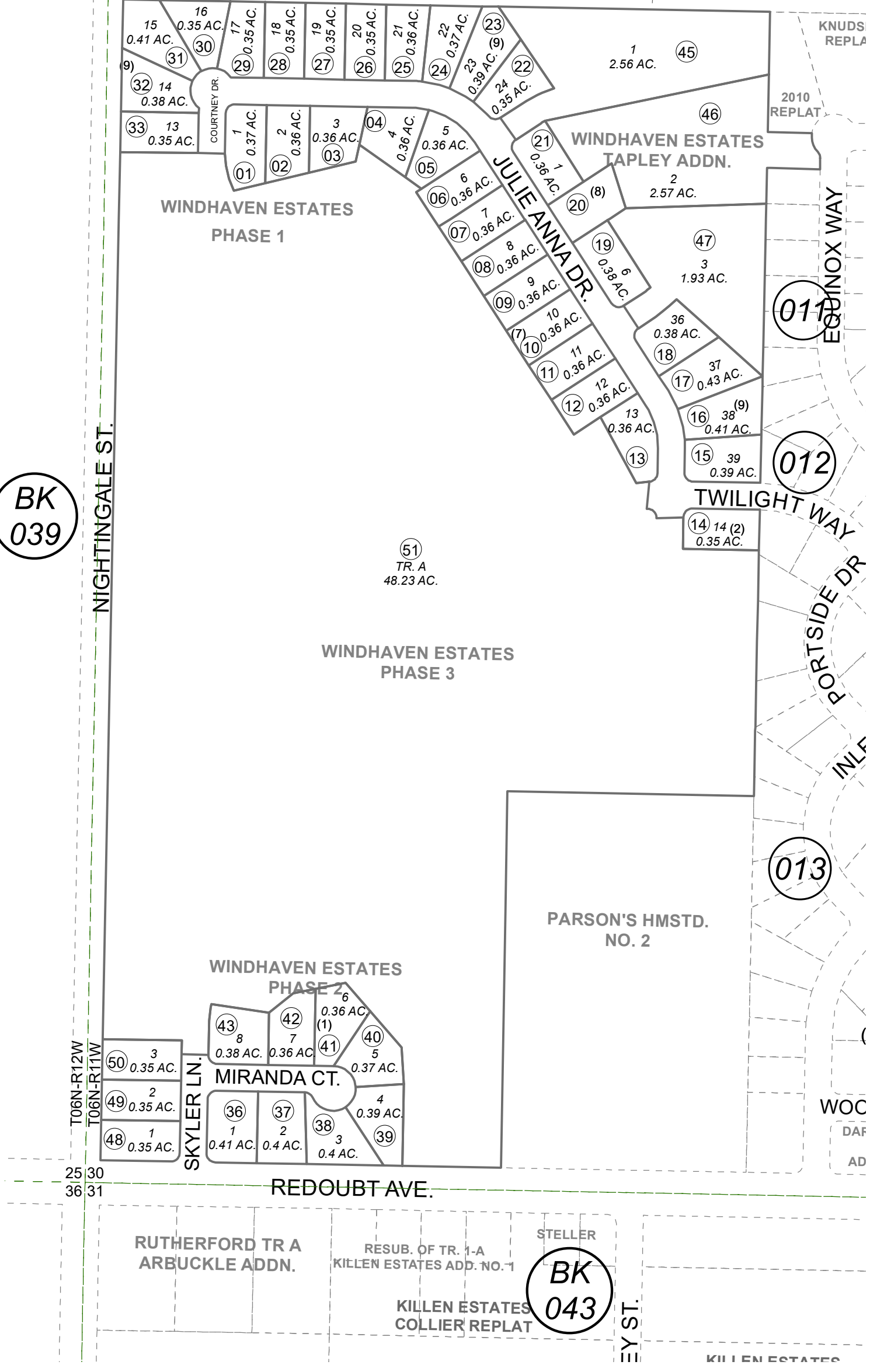


041-014

POR. SW1/4 SEC. 30, T06N, R11W, S.M.

BK 017

BK 039



This map is prepared for Kenai Peninsula Borough Assessing Dept. use only and is not intended for conveyance nor is it a survey.

Note- Assessor's block Numbers Shown in Ellipses Assessor's Parcel Numbers Shown in Circles

WINDHAVEN ESTATES PHASE 1 KN0980026
WINDHAVEN ESTATES PHASE 2 KN0990060
WINDHAVEN ESTATES TAPLEY ADDN KN2012033
WINDHAVEN ESTATES PHASE 3 KN2019005

Assessor's Map
Kenai Peninsula Borough



0 100 200 Feet

MAY 29, 2019

For 2020 assessment roll	
Delete	Add
	Revise
To	
44	48-51