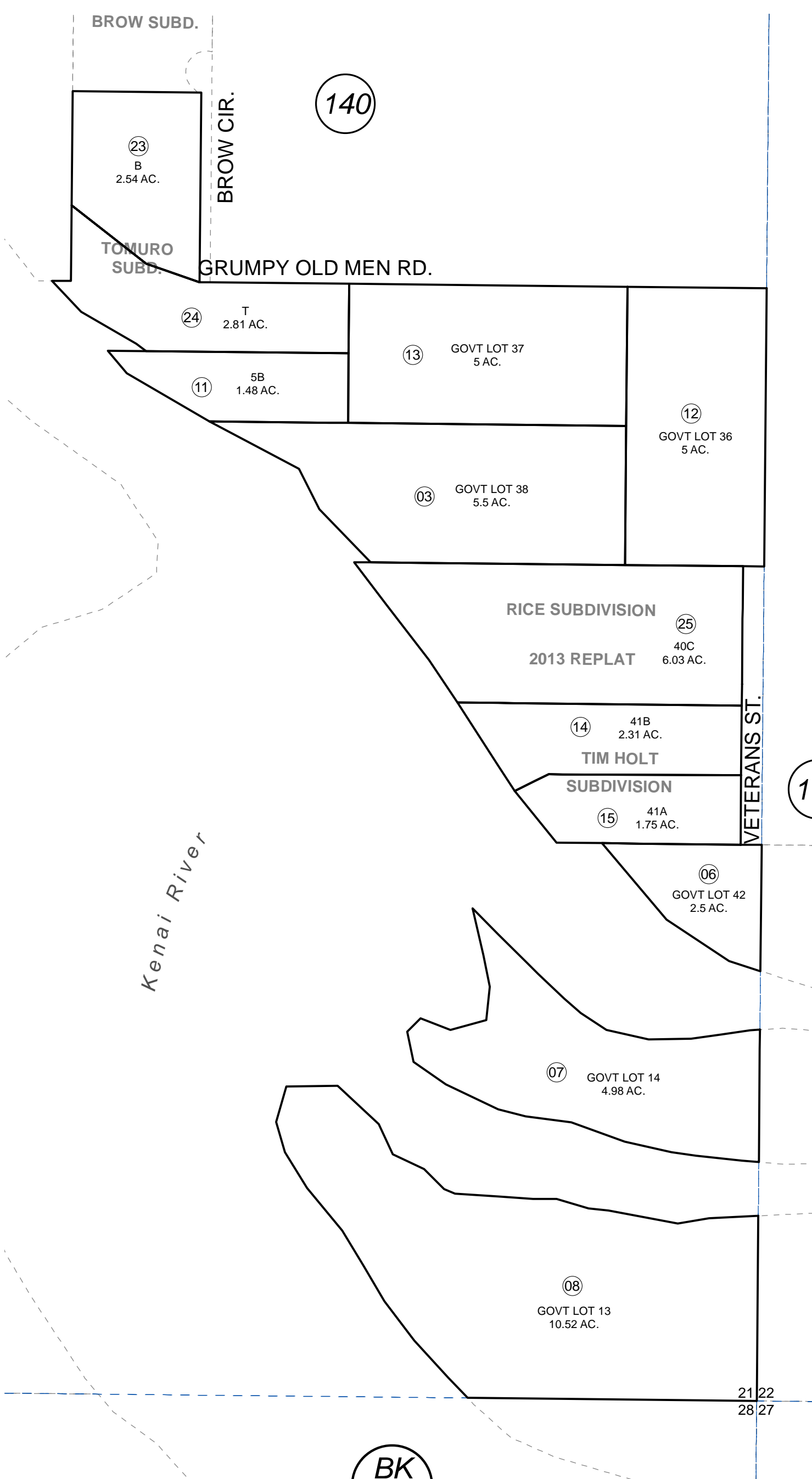


S1/2 SEC. 21, T05N, R08W, S.M.

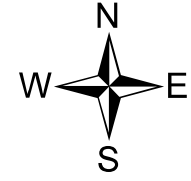
065-150



140

160

BK 066



0 100 200 Feet

DECEMBER 27, 2013

For 2014 assessment roll	
Delete	Add
	Revise
To	
18,	25
20-22	

This map is prepared for Kenai Peninsula Borough Assessing Dept. use only and is not intended for conveyance nor is it a survey.

Note- Assessor's block Numbers Shown in Ellipses
Assessor's Parcel Numbers Shown in Circles

SECTION LOT BREAKDOWN KN0001394
TIM HOLT SUB KN0750133
RICE SUB KN0780092
RICE SUB NO 2 KN0840175
TOMURO SUB KN2013003
RICE SUB 2013 REPLAT KN2013108

Assessor's Map
Kenai Peninsula Borough