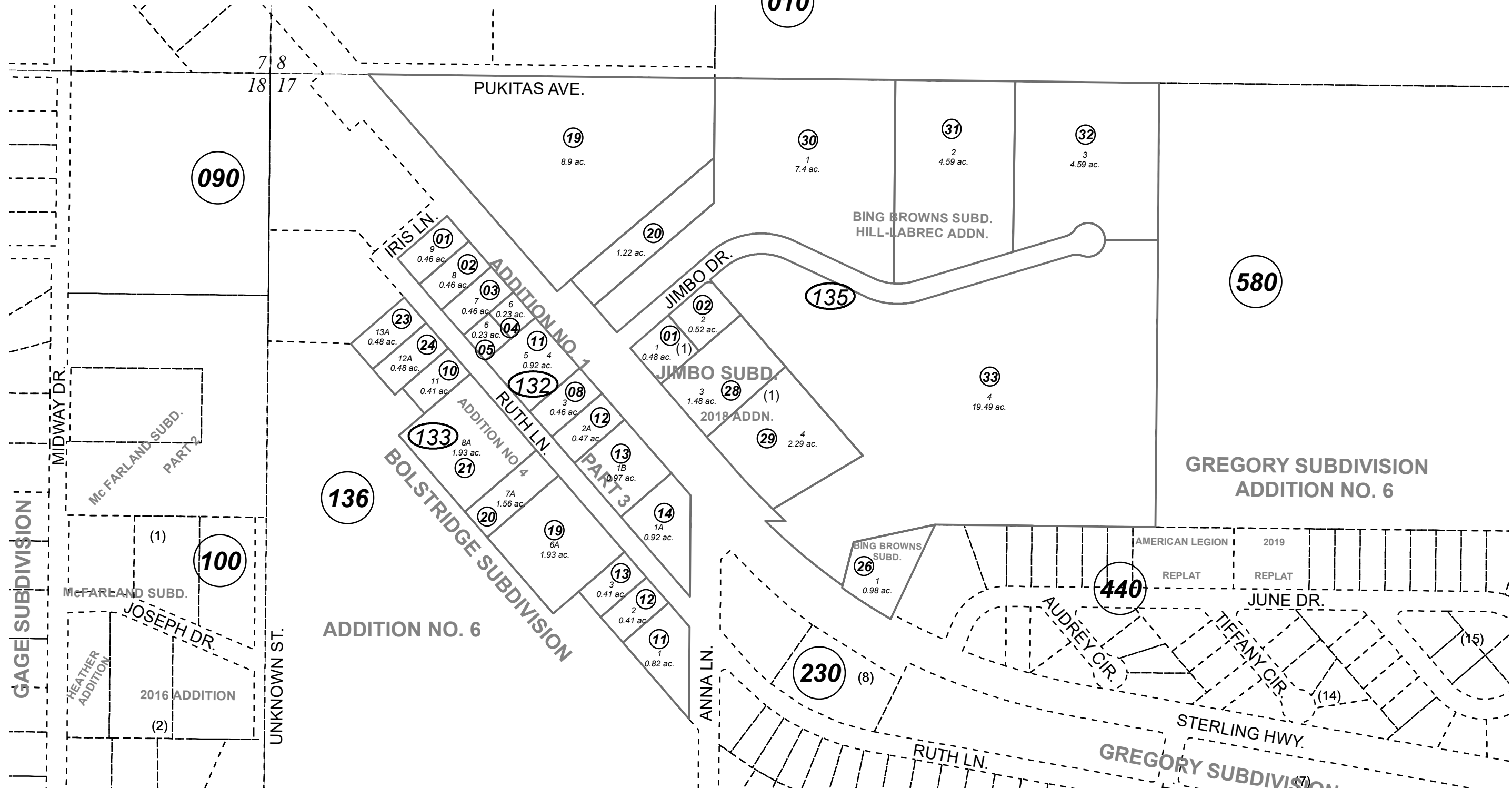


POR. NW1/4 SEC. 17, T05N, R08W, S.M.

065-130

010



AUGUST 4, 2020

For 2021 assessment roll		
Delete	Add	Revise
	To	
13521,		
13524,		
13527	13530-33	

BOLSTRIDGE SUB ADDN NO 1 KN0000811
 JIMBO SUB KN0001719
 BOLSTRIDGE SUB ADDN NO 2 KN0800055
 BOLSTRIDGE SUB PART THREE KN0870129
 BOLSTRIDGE SUB ADD 4 KN2000073
 BOLSTRIDGE SUB ADDN NO 6 KN2006017
 BING BROWNS SUB KN2017067
 JIMBO SUB 2918 ADDN KN2018089
 BING BROWNS SUB HILL-LABREC ADDN KN2020032

Assessor's Map
Kenai Peninsula Borough

This map is prepared for Kenai Peninsula Borough Assessing Dept. use only and is not intended for conveyance nor is it a survey.

Note- Assessor's block Numbers Shown in Ellipses
Assessor's Parcel Numbers Shown in Circles