

POR. N1/2 SW1/4 SE. 29, T05N, R10W, S.M.

059-100

KNIGHT ESTATES

MARYDALE

240

070

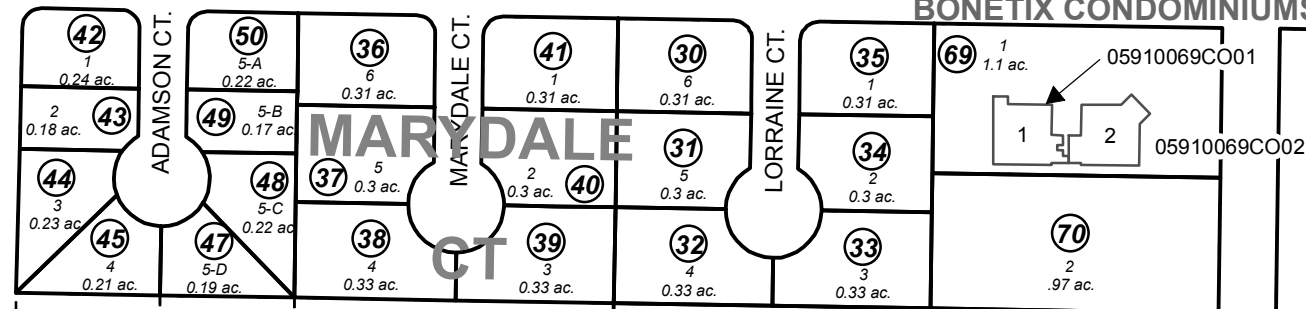
081

091 SUBD.

SOMER

BONETIX CONDOMINIUMS

W. MARYDALE AVE.



HOSPITAL PL

BUXTON SUBD. BICUSPID ADDN. NO. 2

05

62 1.09 ac.

67 2A .87 ac.

66 1A .99 ac.

121

370

DAVIDHIZAR

GREEN ESTATES SUB 2009 ADDN

52 2 2.27 ac.

SUB.

51 2.06 ac.

DOC ISAAK SUBDIVISION

W. ROCKWELL AVE.

400

GREEN ESTATES SUB

1998 ADDN.



CENTRAL PENINSULA MEDICAL CENTER CONDOMINIUMS

71 LH01-LH06 1B 20.47 AC.

PENINSULA MEDICAL CENTER SUBD.

61 5-A 1.42 ac.

360

W. KATMAI AVE. KOBUK-

KOBUK

NORTHERN

DAWN

SUB

LIGHTS

NORTHERN

GLOW

SUB

LIGHTS

W. CORRAL AVE.

LIBRARY

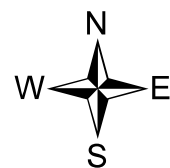
(1)

(2)

130

- KNIGHT ESTATES SUB NO 5 KN0740052
- MARYDALE COURT SUB KN0760065
- ADAMSON SUB KN0780006
- ADAMSON RESUB KN0780117
- PENINSULA MEDICAL CENTER SUB KN0830079
- DAVIDHIZAR SUB KN0830162
- PENINSULA MEDICAL CENTER SUB NO 2 KN0840103
- BUXTON SUB BICUSPID ADDN NO 2 KN2002078
- CENTRAL PENINSULA GENERAL HOSPITAL SUB KN2005052
- KPO SUB KN2007120
- BONETIX CONDOMINIUMS KN2008028
- DOC ISAAK SUB KN2017033

270



0 50 100 200 Feet

JULY 26, 2017

For 2018 assessment roll

Delete	Add	Revise
To		
54,55		
60,68	71	

Assessor's Map Kenai Peninsula Borough

This map is prepared for Kenai Peninsula Borough Assessing Dept. use only and is not intended for conveyance nor is it a survey.

Note- Assessor's block Numbers Shown in Ellipses Assessor's Parcel Numbers Shown in Circles