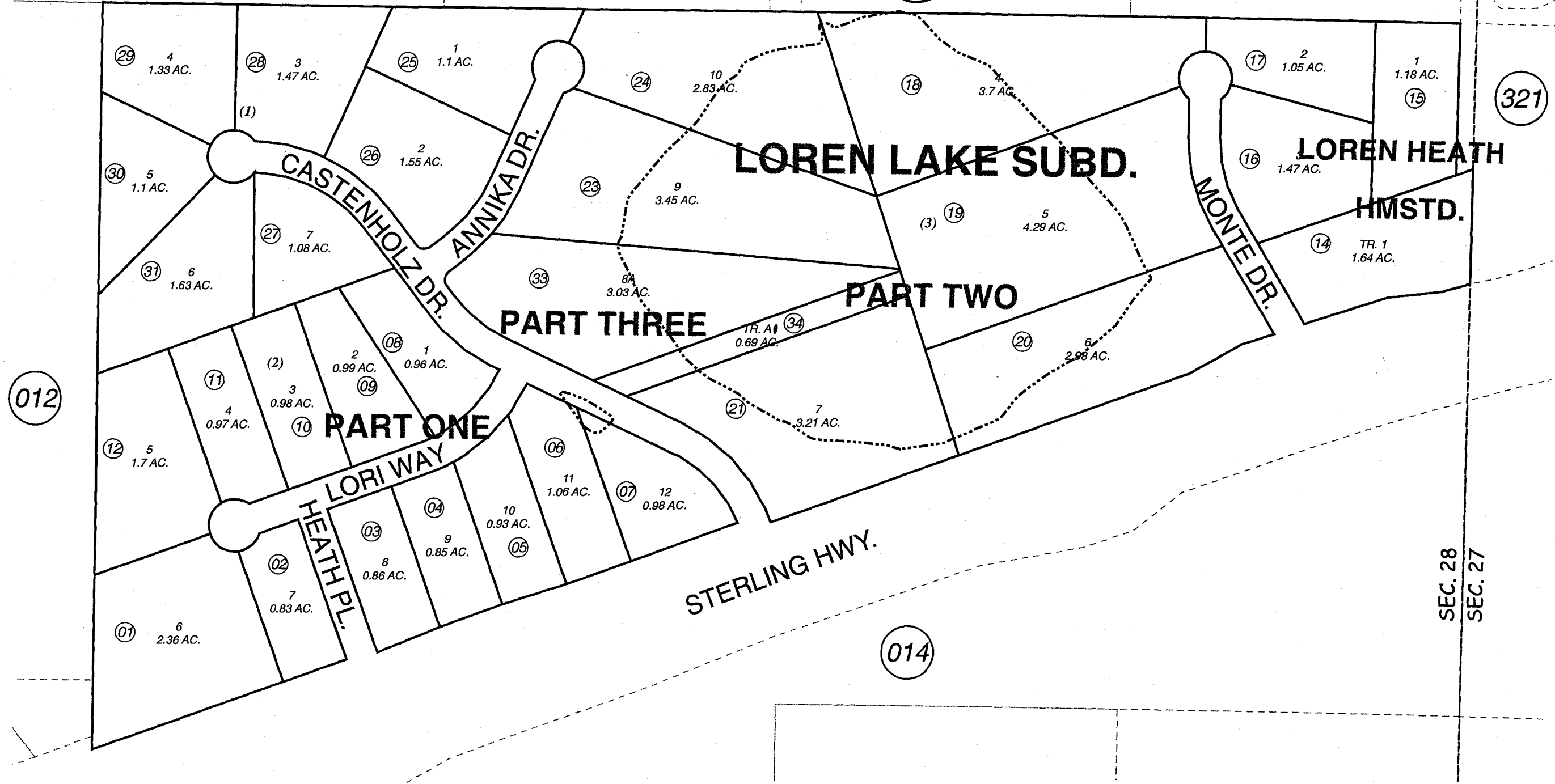


POR. SEC. 28, T05N, R10W, S.M.

BK  
057

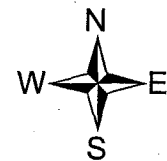
059-011



SEPT. 8, 2004

For 2005 assessment roll

Delete	Add	Revise
To		
22,32	33,34	



Assessor's Map  
Kenai Peninsula Borough

LOREN HEATH HOMESTEAD AMENDED □ KN0001633  
 LOREN LAKE SUB PART 1 □ KN0830016  
 LOREN LAKE SUB PART 2 □ KN0830226  
 LOREN LAKE SUB PART 2 AMENDED □ KN0830226  
 LOREN LAKE SUB PART THREE □ KN2004062

This map is prepared  
 for Kenai Peninsula  
 Borough Assessing Dept.  
 use only and is not  
 intended for conveyance  
 nor is it a survey.

Note- Assessor's block Numbers Shown in Ellipses  
 Assessor's Parcel Numbers Shown in Circles