

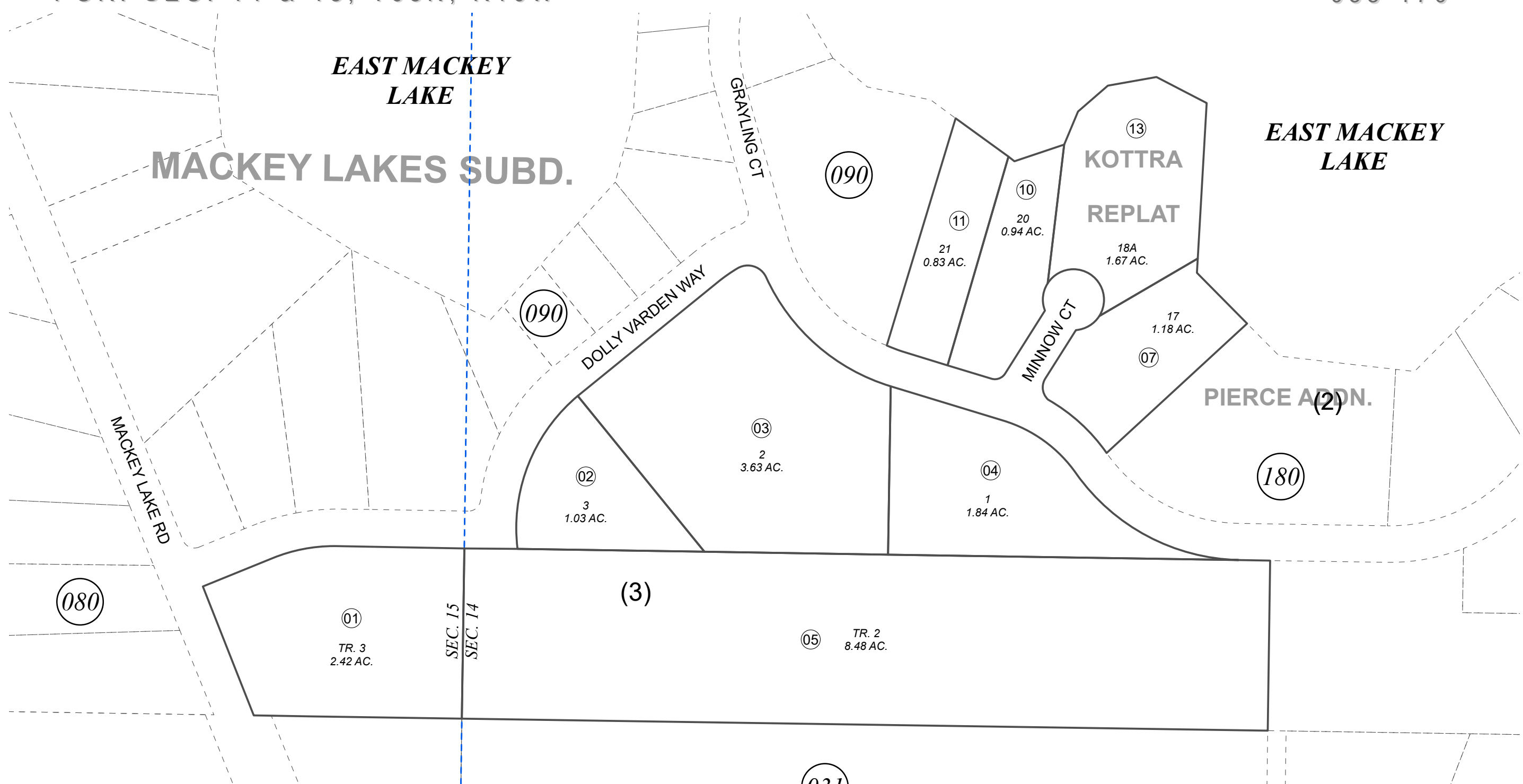
POR. SEC. 14 & 15, T05N, R10W

058-170

**EAST MACKEY
LAKE**

MACKEY LAKES SUBD.

**EAST MACKEY
LAKE**



JULY 14, 2022

For 2023 assessment roll		
Delete	Add	Revise
To		
12	058-090+	



0 50 100 200 Feet

Assessor's Map
Kenai Peninsula Borough

MACKEY LAKES SUB ADDN NO 1 PART 3 KN0740092
MACKEY LAKES SUB KOTTRA REPLAT KN2012043

This map is prepared for Kenai Peninsula Borough Assessing Dept. use only and is not intended for conveyance nor is it a survey.

Note- Assessor's block Numbers Shown in Elipses
Assessor's Parcel Numbers Shown in Circles