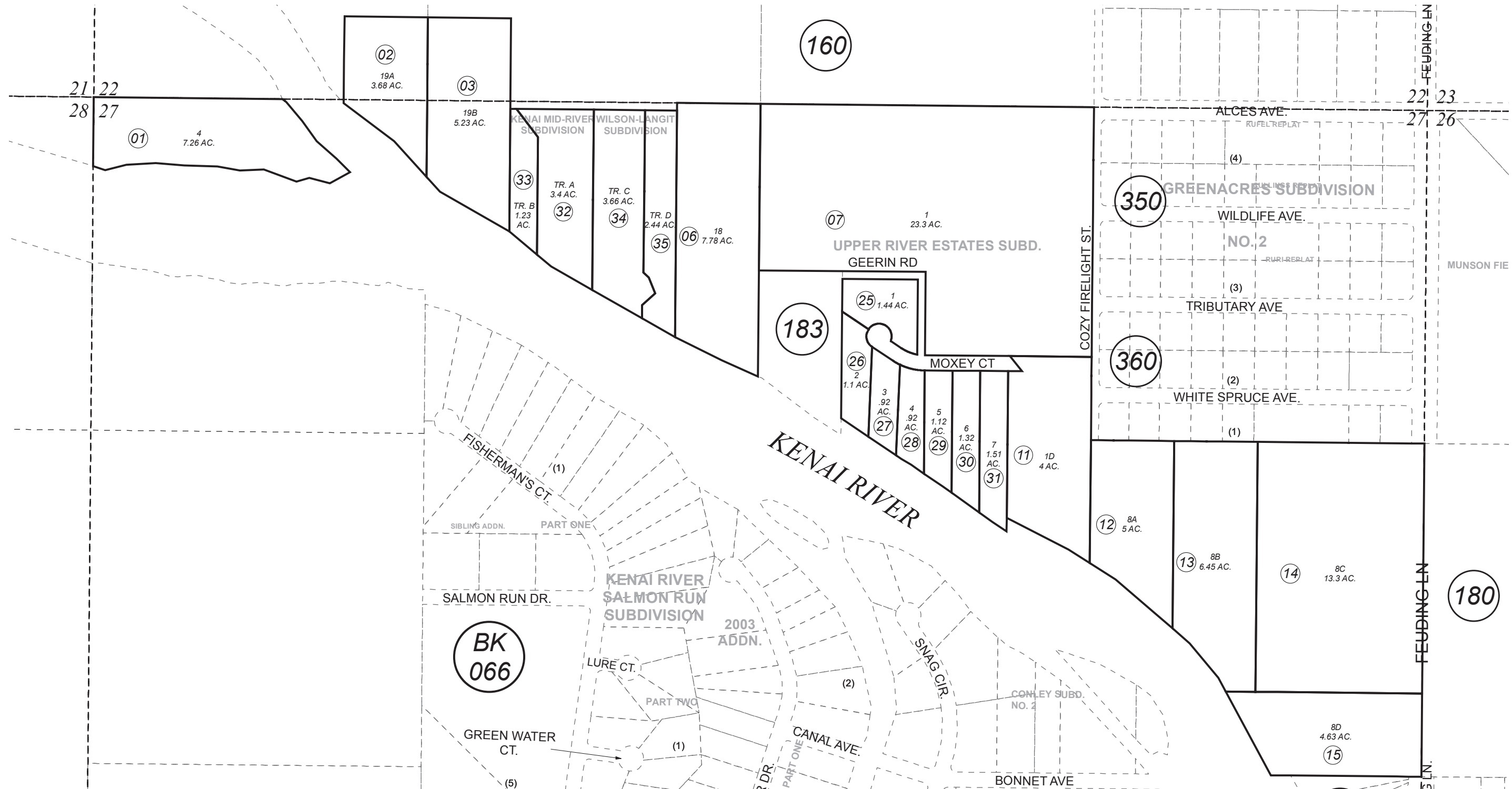


POR. SEC. 22 & 27, T05N, R08W, S.M.

065-181



JUNE 12, 2018

For 2019 assessment roll		
Delete	Add	Revise
To		
05	34,35	

Assessor's Map
Kenai Peninsula Borough

UPPER RIVER ESTATES SUB KN2006068
KENAI MID-RIVER SUB KN2006046
WILSON-LANGIT SUB KN2018022

Note- Assessor's block Numbers Shown in Ellipses
Assessor's Parcel Numbers Shown in Circles

This map is prepared for Kenai Peninsula Borough Assessing Dept. use only and is not intended for conveyance nor is it a survey.