

N1/2 NE1/4 SEC. 14, T05N, R08W, S.M.

065-165

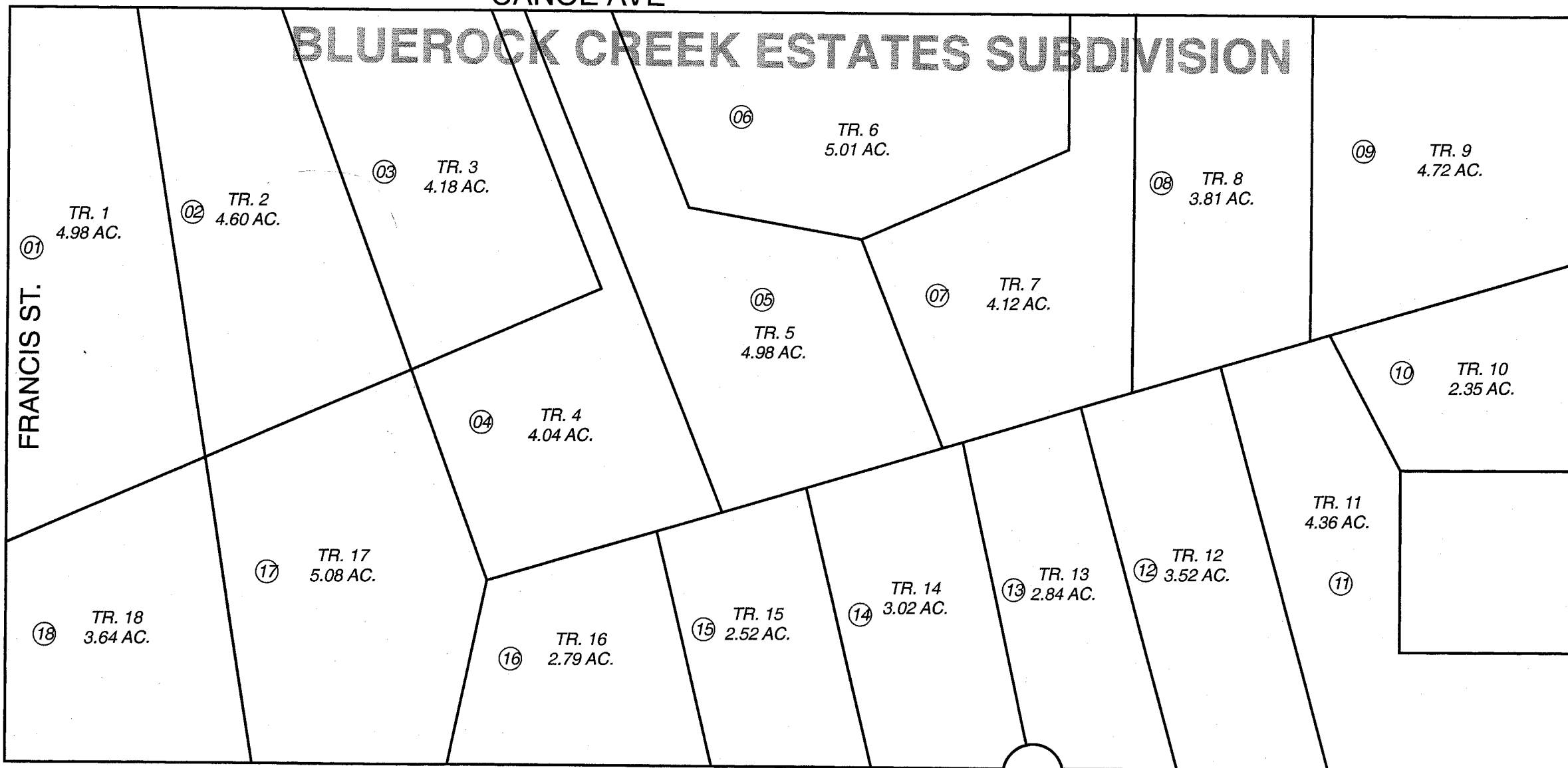
074

ADDITION NO. 1

CANOE AVE

11 12
14 13

BLUEROCK CREEK ESTATES SUBDIVISION



FRANCIS ST.

ADKINS RD.

BING DR.

Y ST.

240

322

450

NOVEMBER 22, 2005

For 2006 assessment roll

Delete	Add	Revise
--------	-----	--------

To

NEW PAGE



Assessor's Map
Kenai Peninsula Borough

BLUEROCK CREEK ESTATES SUB KN2005096

This map is prepared for Kenai Peninsula Borough Assessing Dept. use only and is not intended for conveyance nor is it a survey.

Note- Assessor's block Numbers Shown in Elipses
Assessor's Parcel Numbers Shown in Circles