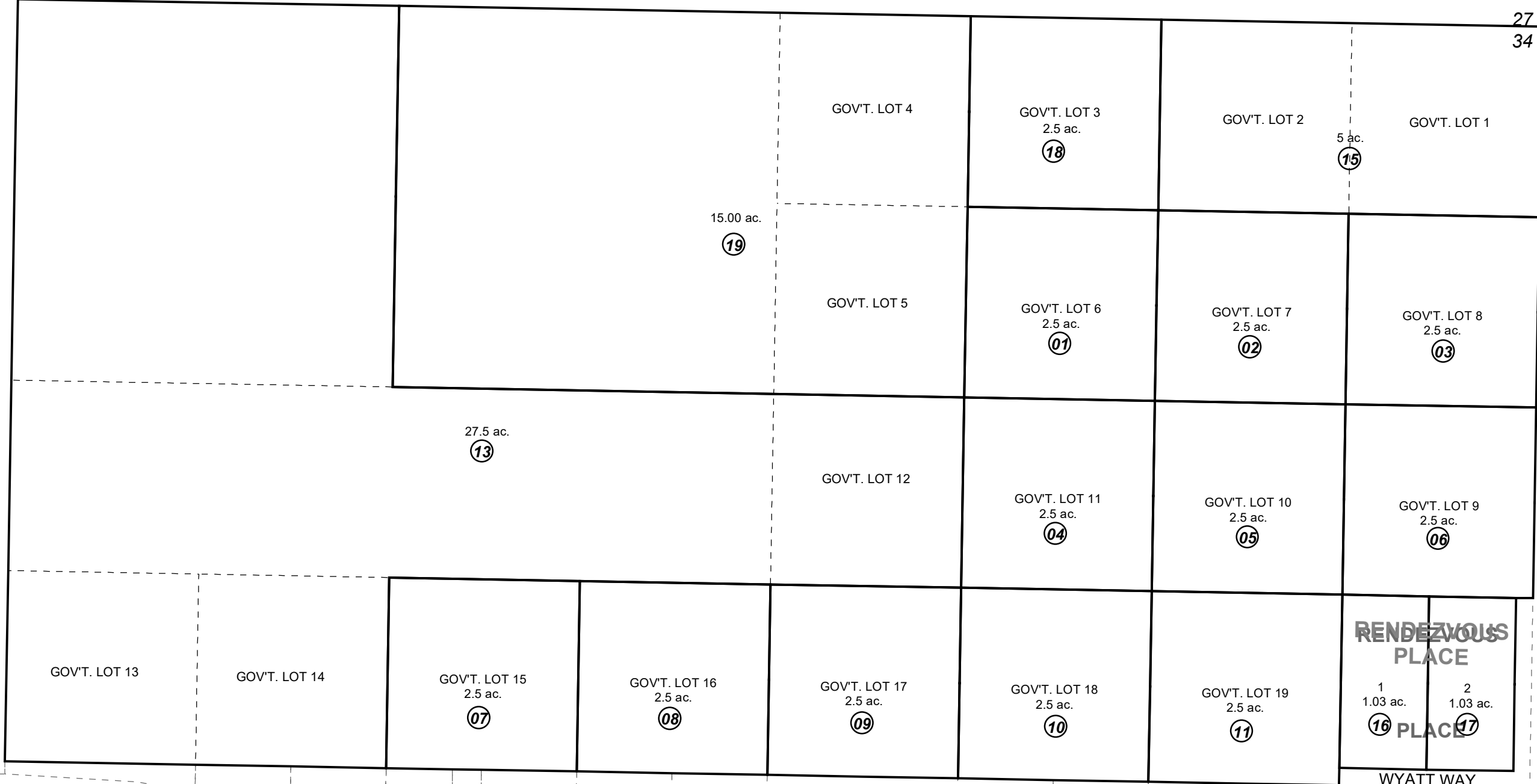


POR. SEC. 34, T06N, R11W, S.M.

**BK**  
**41**

045-160

27 26  
34 35



**1**

**BK**  
**41**

SWIRES RD.

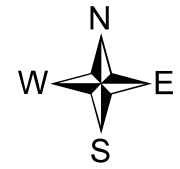
RODLAND

**18**

WYATT WAY

JANUARY 24, 2019

For 2019 assessment roll		
Delete	Add	Revise
To		
14	18,19	



0 75 150 300 Feet

RENDEZVOUS PLACE KN2001015

Assessor's Map  
Kenai Peninsula Borough

This map is prepared for Kenai Peninsula Borough Assessing Dept. use only and is not intended for conveyance nor is it a survey.

Note- Assessor's block Numbers Shown in Elipses  
Assessor's Parcel Numbers Shown in Circles