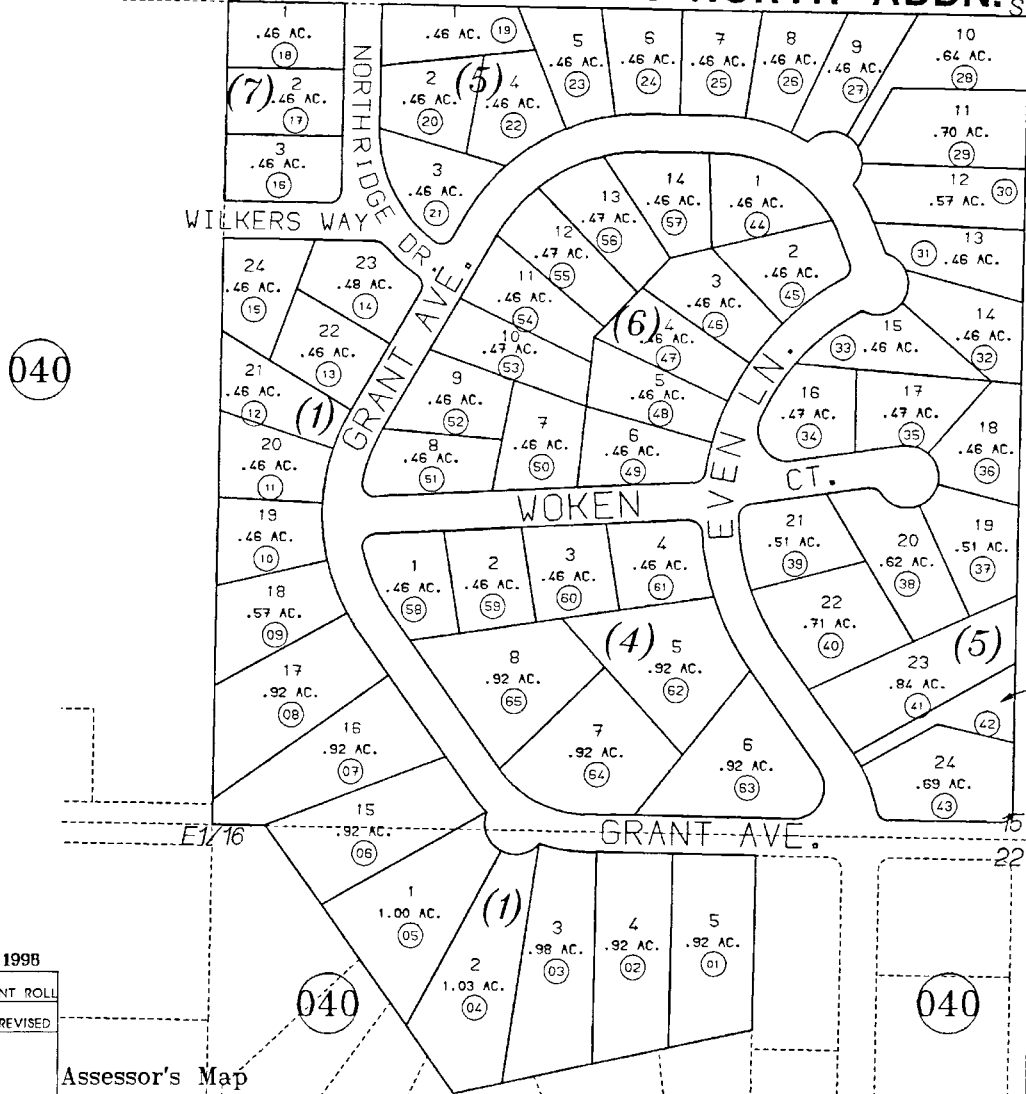


SE1/4 SE1/4 SEC. 15 & POR. NE1/4 (031) NE1/4 SEC. 22, T5N, R11W, S.M.

055-041

SE 1/16 **WILLOW BROOK NORTH ADDN.** S 1/16



(040)

(421)

(040)

(040)



DATE: SEPT. 3, 1998
 FOR 19 99 ASSESSMENT ROLL
 DELETE ADD REVISED
 TO
 NEW
 PAGE

Assessor's Map
 Kenai Peninsula Borough
 WILLOW BROOK NORTH ADDN. KN980042

THIS MAP IS PREPARED FOR KENAI PENINSULA BOROUGH ASSESSING DEPT. USE ONLY AND IS NOT INTENDED FOR ANY OTHER USE OR REPRESENTATION
 NOTE - Assessor's Block Numbers Shown in Ellipses
 Assessor's Parcel Numbers Shown in Circles