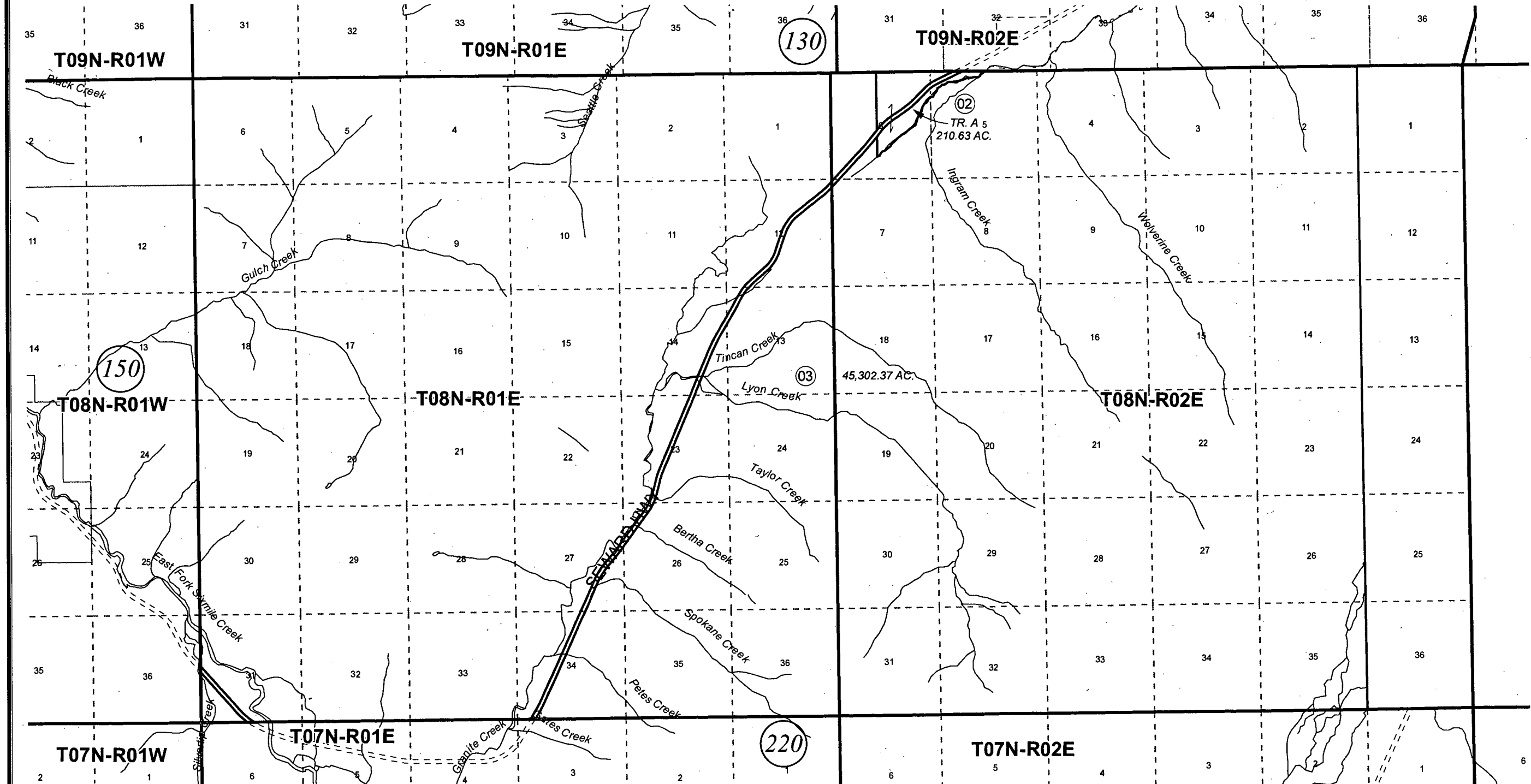


T08N, R01E, R02E, S.M.

035-160



OCTOBER 4, 2012

For 2013 assessment roll		
Delete	Add	Revise
To		
01	02,03	



Assessor's Map
Kenai Peninsula Borough

U.S. RECORD OF SURVEY S008N002E

This map is prepared for Kenai Peninsula Borough Assessing Dept. use only and is not intended for conveyance nor is it a survey.

Note- Assessor's block Numbers Shown in Elipses
Assessor's Parcel Numbers Shown in Circles