

POR. SEC. 32, T05N, R10W, S.M.

060-141

S. KOBUK

UPPE

S. FIR

ADD.

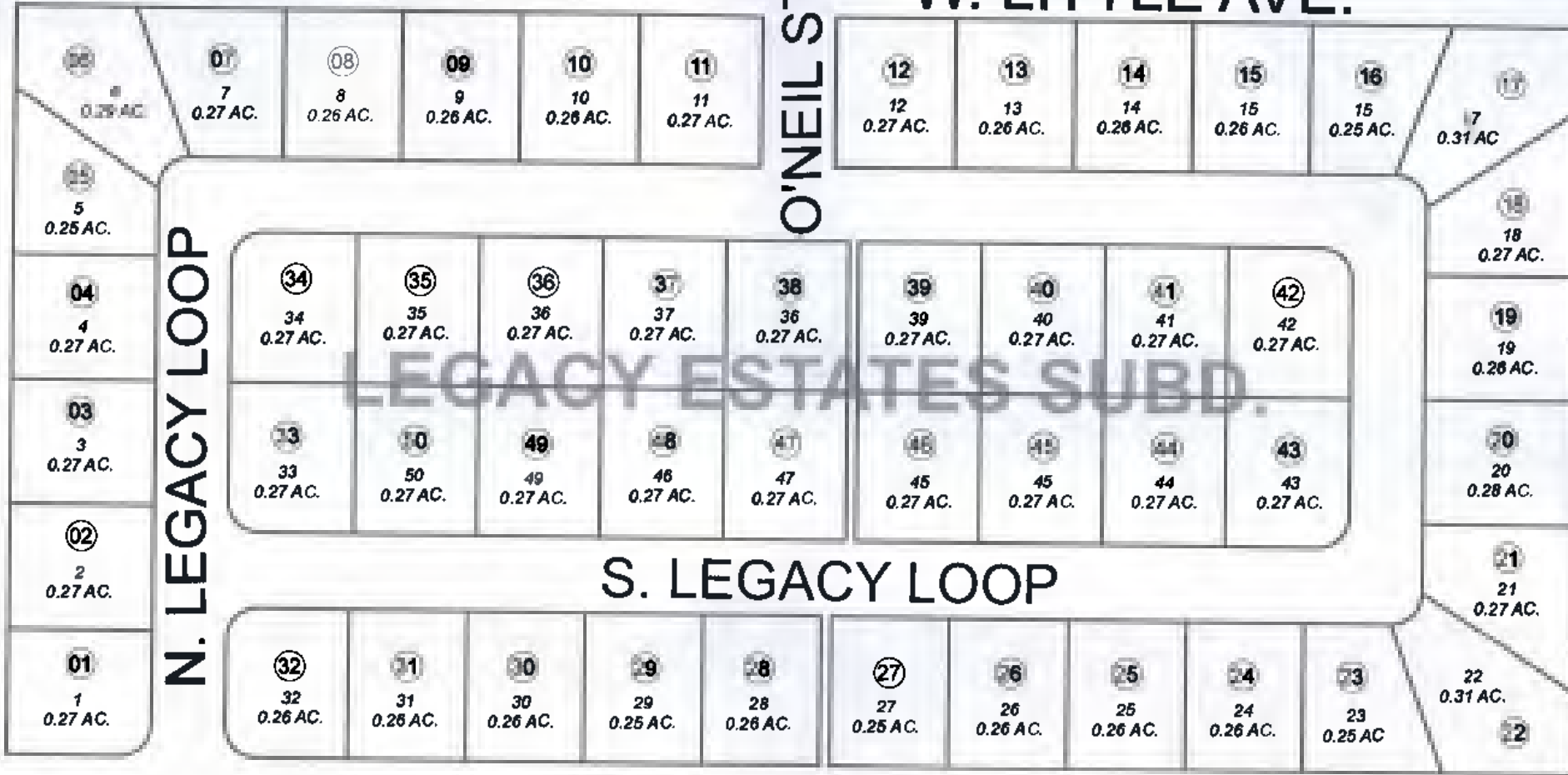
NO. 1

140

W. LITTLE AVE.

O'NEIL ST.

NO. 2



071

REPLAT O

TRU

REPLAT OI

072

W. RI

BROWN



OCTOBER 3, 2012

For 2013 assessment roll

Delete	Add	Revise
--------	-----	--------

To

NEW PAGE

Assessor's Map
Kenai Peninsula Borough

LEGACY ESTATES SUB KN2012051

Note- Assessor's block Numbers Shown in Ellipses
Assessor's Parcel Numbers Shown in Circles