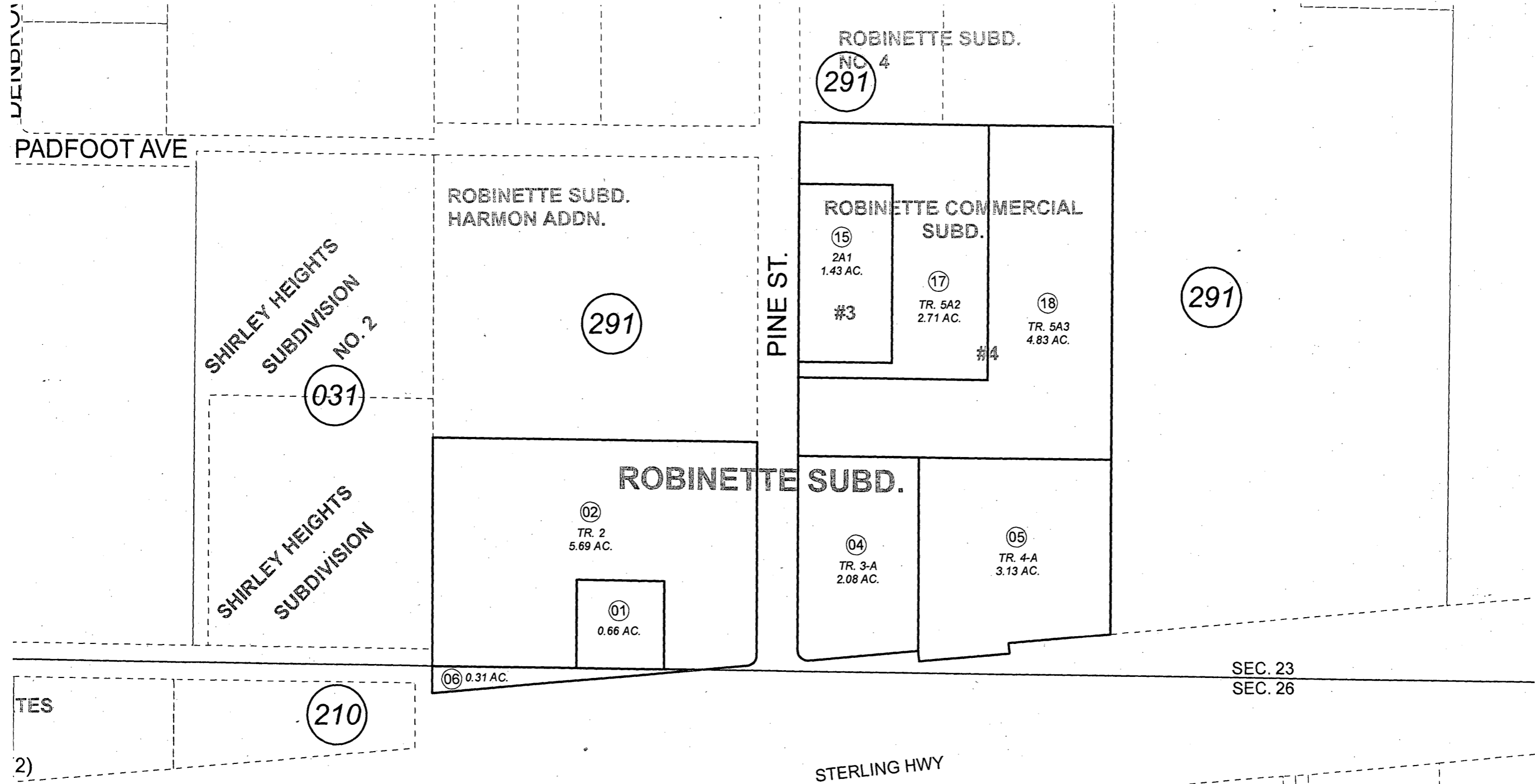


POR. SW1/4 SE1/4, SEC. 23 & POR. SEC. 26, T05N, R10W, S.M.

058-290



AUGUST 28, 2012

For 2013 assessment roll		
Delete	Add	Revise
	To	
16	17,18	

Assessor's Map
Kenai Peninsula Borough

ROBINETTE SUB KN0790036
 ROBINETTE COMMERCIAL SUB KN0850095
 ROBINETTE COMMERCIAL SUB NO 2 KN2007119
 ROBINETTE COMMERCIAL SUB NO 3 KN2011039
 ROBINETTE COMMERCIAL SUB NO 4 KN2012045

This map is prepared for Kenai Peninsula Borough Assessing Dept. use only and is not intended for conveyance nor is it a survey.
 Note- Assessor's block Numbers Shown in Elipses
 Assessor's Parcel Numbers Shown in Circles