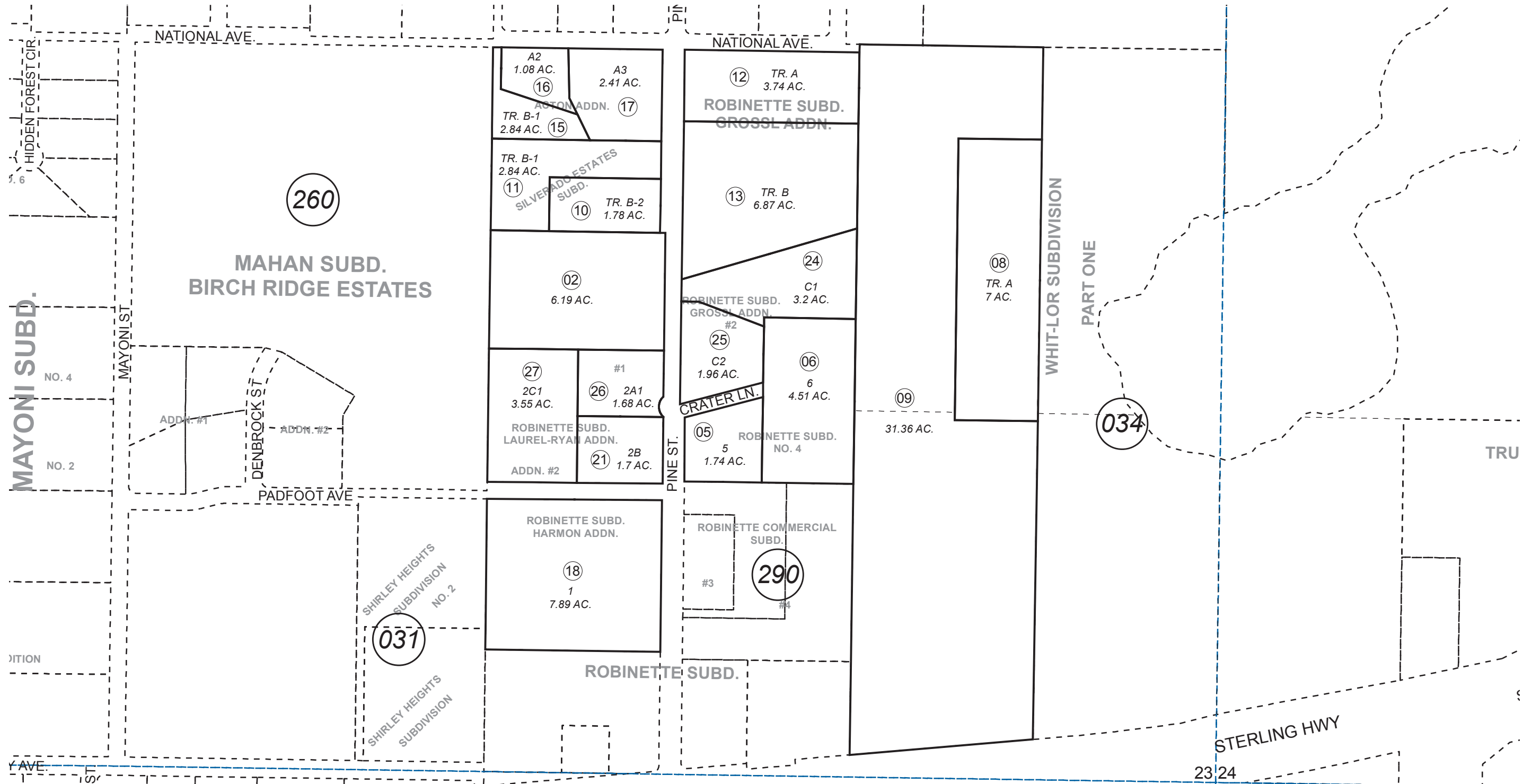


POR. SE1/4 SEC. 23, T05N, R10W, S.M.

058-291



0 200 400 Feet

JUNE 12, 2018

For 2019 assessment roll		
Delete	Add	Revise
To		
22,23	27	

Assessor's Map
Kenai Peninsula Borough

- WHIT-LOR SUB PART ONE □ KN0870031
- SILVERADO ESTATES SUB □ KN0870090
- ROBINETTE SUB NO 4 □ KN0940016
- SILVERADO ESTATES SUB NO 2 □ KN0940070
- ROBINETTE SUB GROSSL ADDN KN2006115
- SILVERADO ESTATES SUB ACTON ADDN KN2007044
- ROBINETTE SUB HARMON ADDN KN2007044
- ROBINETTE SUB LAUREL-RYAN ADDN KN2007098
- ROBINETTE SUB GROSSL ADDN #2 KN2012075
- ROBINETTE SUB LAUREL-RYAN ADDN #1 KN2013105
- ROBINETTE SUB LAUREL-RYAN ADDN #2 KN2018017

Note- Assessor's block Numbers Shown in Ellipses
Assessor's Parcel Numbers Shown in Circles

This map is prepared for Kenai Peninsula Borough Assessing Dept. use only and is not intended for conveyance nor is it a survey.