

S 1/2 SE 1/4 SEC. 30, T05N, R10W, S.M.

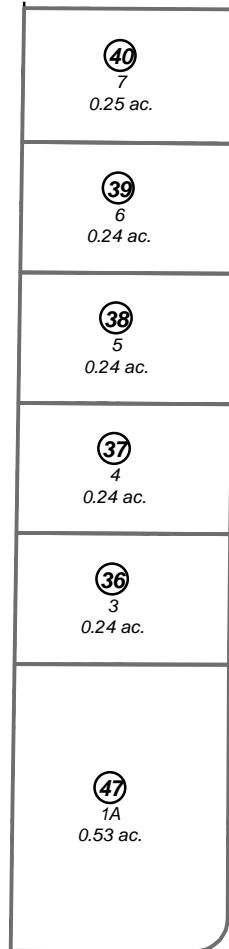
059-332

331

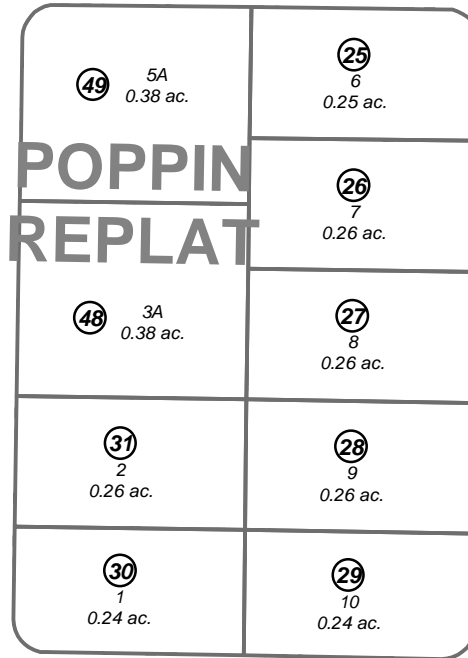
W SUNRISE AVE

SUNRISE CT

302

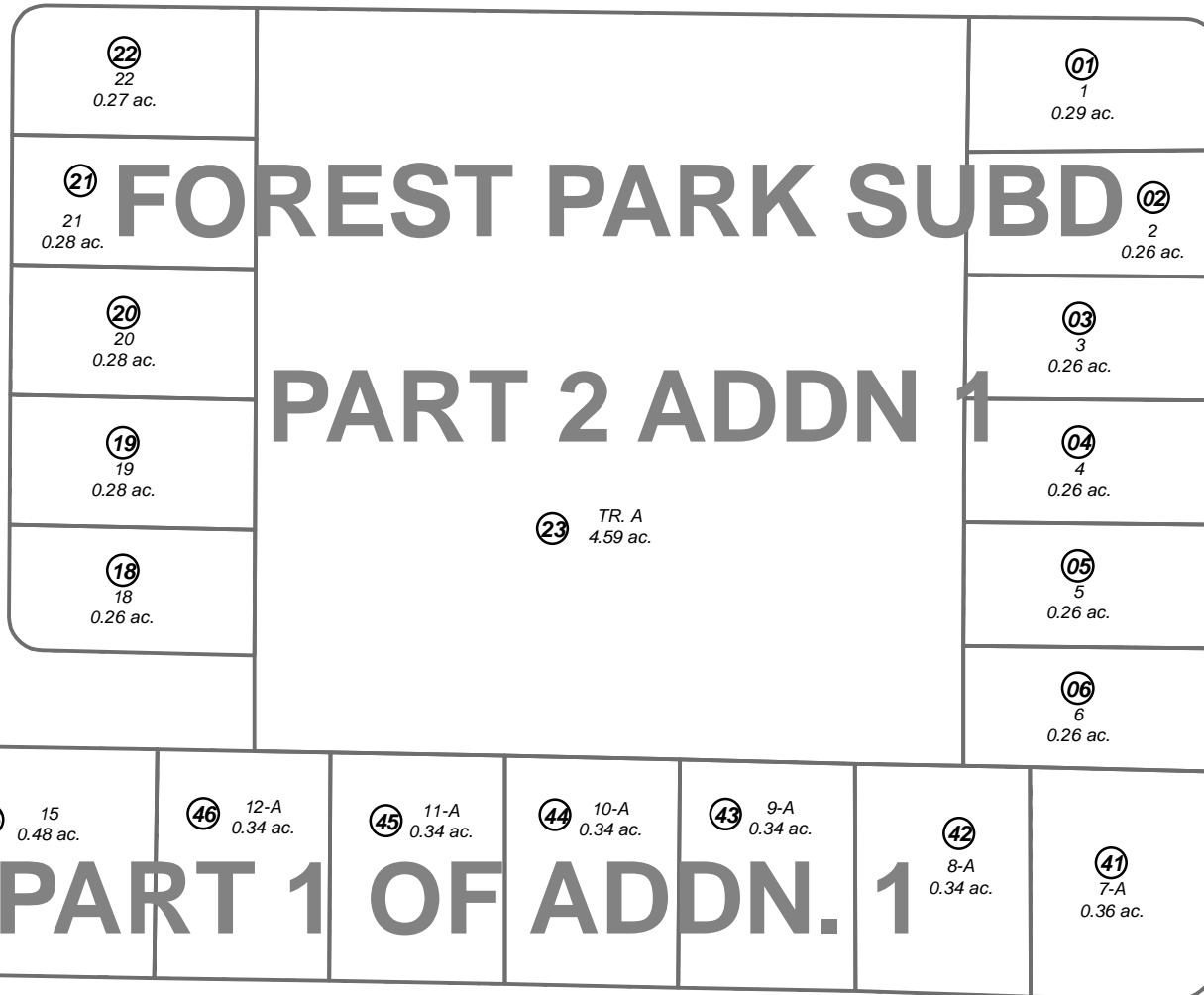


LORD BARANOF ST



POPPIN REPLAT

BRIAR CLIFF ST



FOREST PARK SUBD

PART 2 ADDN 1

PART 1 OF ADDN. 1

EMERALD AVE

N KOBUK ST

KOBUK ST

333

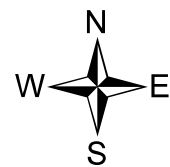
REDWOOD CT

W REDOUBT AVE

30 29  
31 32

S STERLING ST

S KOBUK ST



0 25 50 100 Feet

NOVEMBER 7, 2013

For 2014 assessment roll		
Delete	Add	Revise
To		
24,32, 33	48,49	

Assessor's Map  
Kenai Peninsula Borough

BK  
060

FOREST PARK SUB PART 1 ADDN NO 1 KN0750044  
 FOREST PARK SUB PART 2 ADDN NO 1 KN0750061  
 FOREST PARK SUB PART 1 ADDN NO 1 RESUB KN0780082  
 FOREST PARK SUB CELTIC PARK ADDN KN2002094  
 FOREST PARK SUB PART TWO ADDN ONE POPPIN REPLAT KN22013097

This map is prepared for Kenai Peninsula Borough Assessing Dept. use only and is not intended for conveyance nor is it a survey.

Note- Assessor's block Numbers Shown in Ellipses  
Assessor's Parcel Numbers Shown in Circles