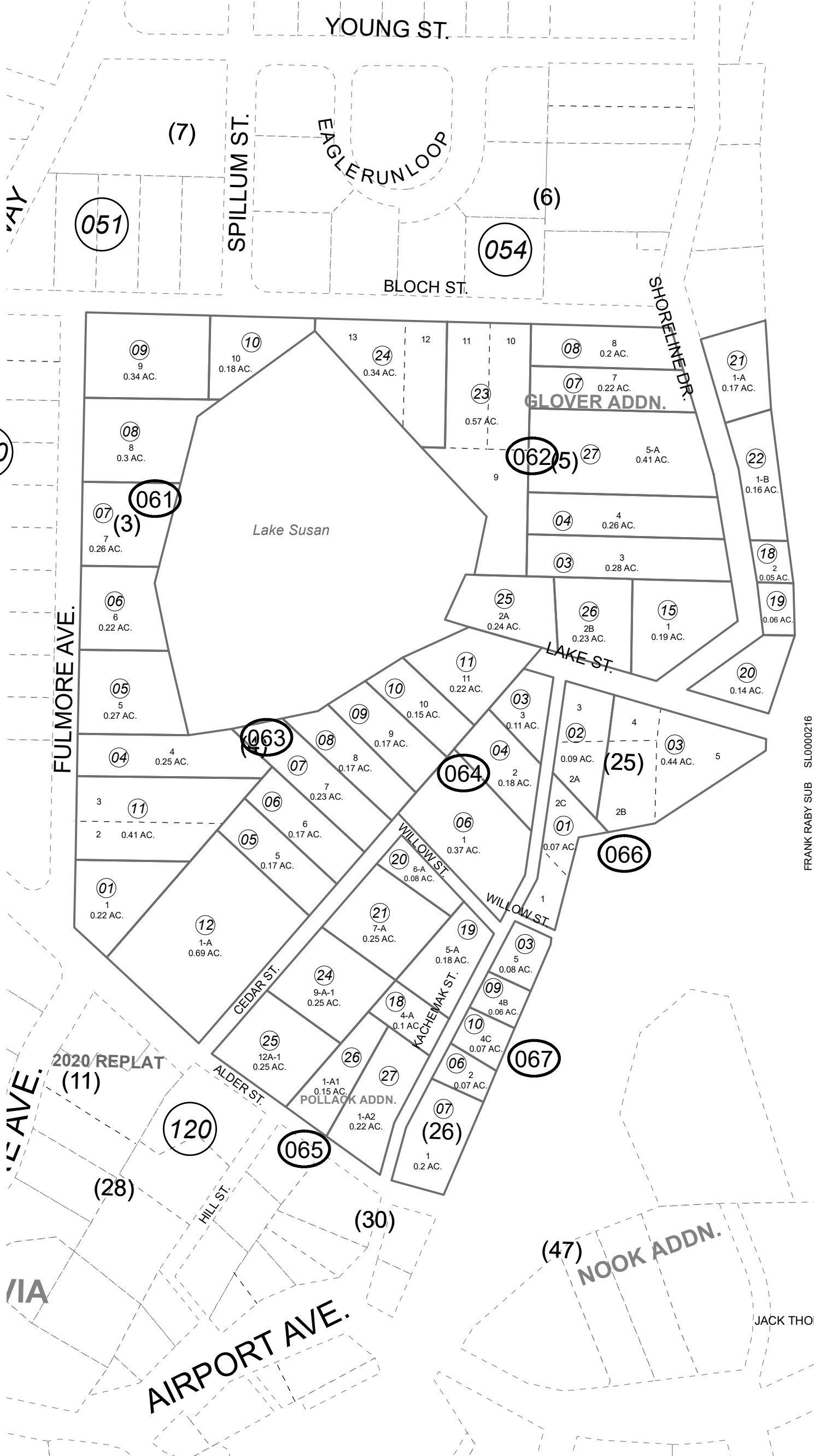


192-060

POR. SEC. 32, T08S, R14W, S.M.



This map is prepared for Kenai Peninsula Borough Assessing Dept. use only and is not intended for conveyance nor is it a survey.

Note- Assessor's block Numbers Shown in Ellipses Assessor's Parcel Numbers Shown in Circles

- FRANK RABY SUB SLO000216
- TOWNSITE OF SELDOVIA USS 1771 SLO001771
- SELDOVIA TOWNSITE BLK 27 REPLAT USS SLO083009
- SELDOVIA TOWNSITE RETRACEMENT SURVEY SLO710103
- FRANK RABY SUB 1973 ADDN SLO730170
- FRANK RABY SUB - JOSEPH A KURTZ 1978 SLO790012
- FRANK RABY SUB - JOSEPH A KURTZ 1978 SLO790012
- FRANK RABY SUB - JOSEPH A KURTZ 1978 SLO790012
- FRANK RABY SUB RESUB OF LOTS 1-4 TR N SLO790013
- FRANK RABY SUB RESUB OF LOTS 1-4 BLK 4 SLO790016
- SELDOVIA TOWNSITE BLK 27 REPLAT USS SLO830009
- SELDOVIA TOWNSITE BLK 27 REPLAT USS 1771 SLO830009
- SELDOVIA TOWNSITE LOTS 12A & 9A BLK 27 SLO860002
- FRANK RABY SUB NO 2 SLO920010
- SELDOVIA TOWNSITE ALASKA SLO980009
- SELDOVIA TOWNSITE ALASKA POLSKY REPLAT LOTS 4B AND 4C, BLOCK 26 SLO2006002
- FRANK RABY SUB GLOVER ADDN SLO208005
- SELDOVIA TOWNSITE POLLACK ADDN SLO2021002

Assessor's Map Kenai Peninsula Borough



0 50 100 Feet

SEPTEMBER 7, 2021

For 2022 assessment roll	
Delete	Add
06517	06526, 06527