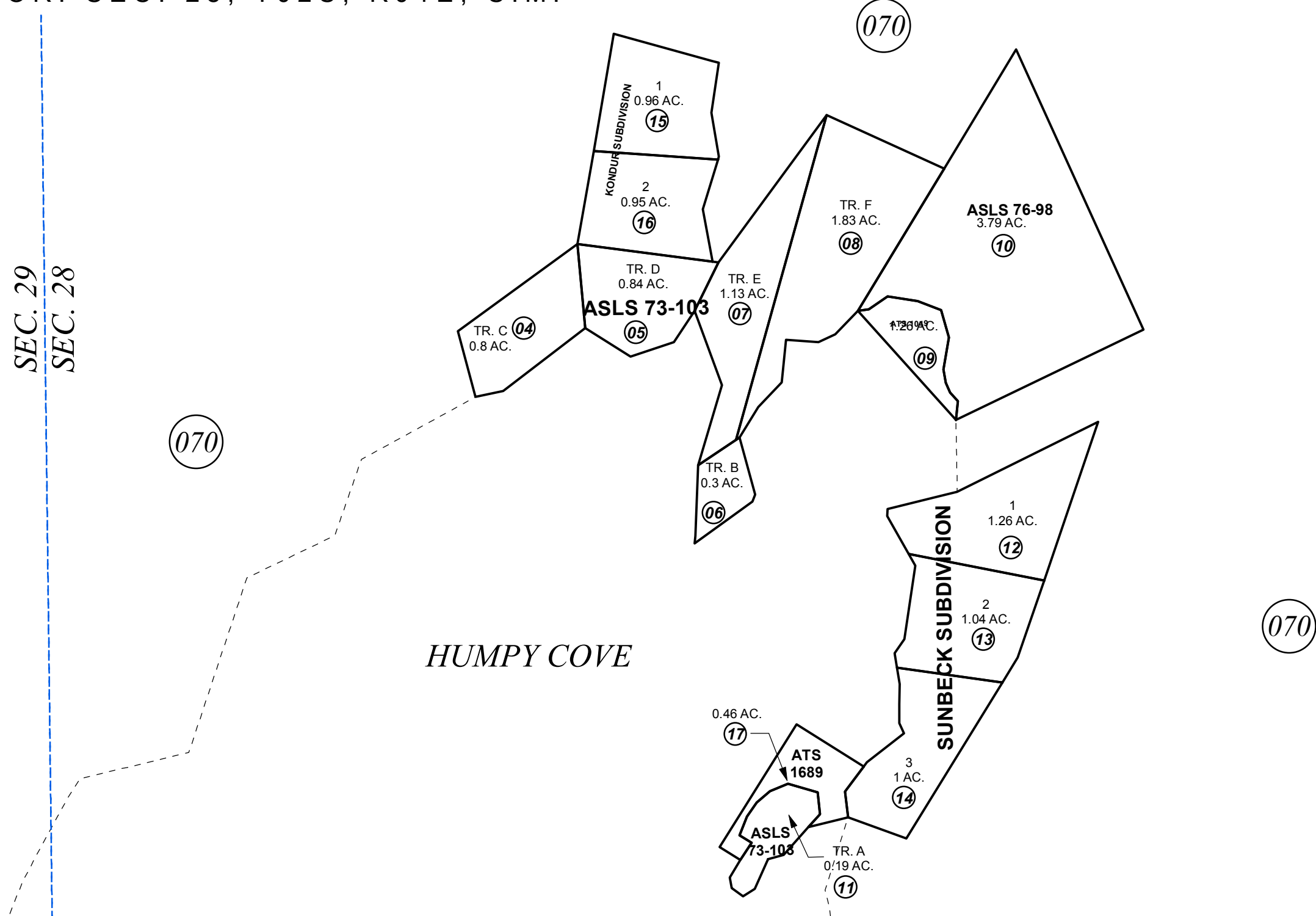


SEC. 29  
SEC. 28



HUMPY COVE



0 50 100 200 Feet

FEBRUARY 1, 2017

For 2017 assessment roll		
Delete	Add	Revise
To		
17		

Assessor's Map  
Kenai Peninsula Borough

A.S.L.S 76-98 SW0770004  
A.T.S 1049 SW0770010  
A.S.L.S. 73-103 SW0770015  
SUNBECK SUB SW0780014  
KONDUR SUB SW0800023  
A.T.S. 1689 SW2015015

This map is prepared for Kenai Peninsula Borough Assessing Dept. use only and is not intended for conveyance nor is it a survey.  
Note- Assessor's block Numbers Shown in Ellipses  
Assessor's Parcel Numbers Shown in Circles